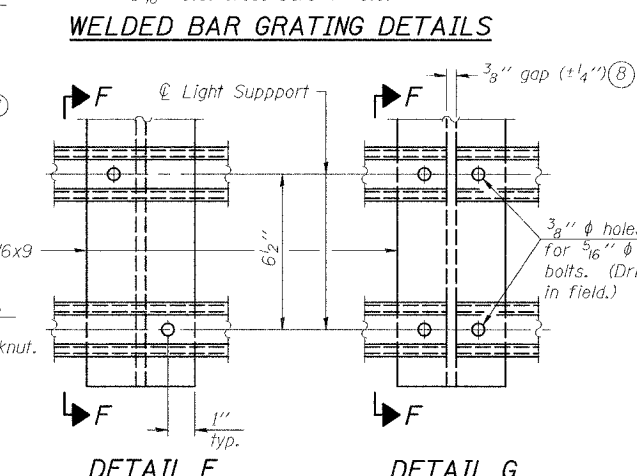
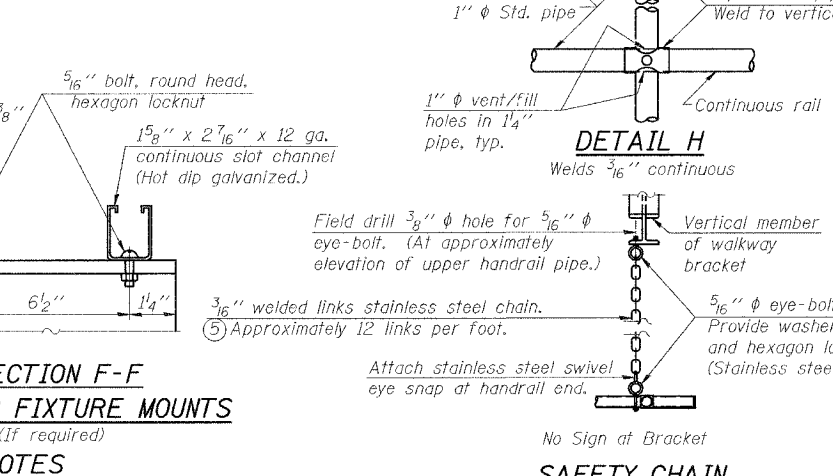
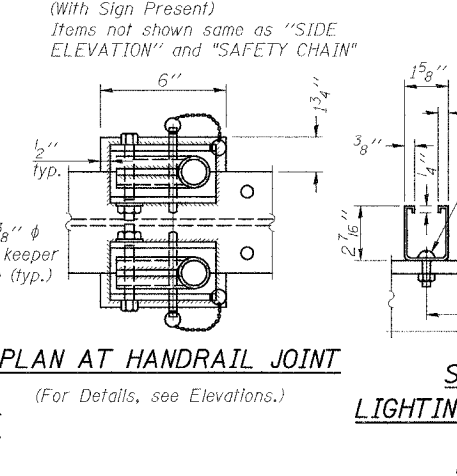
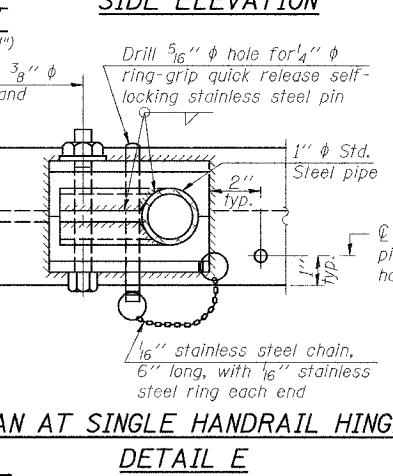
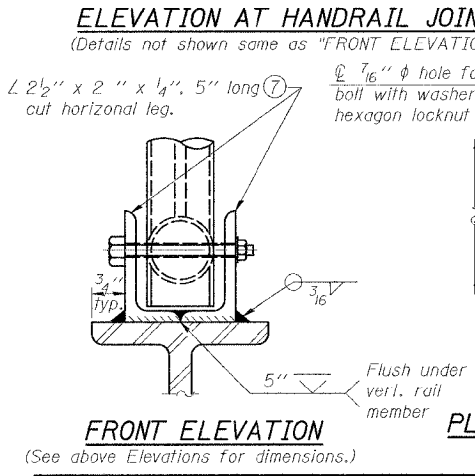
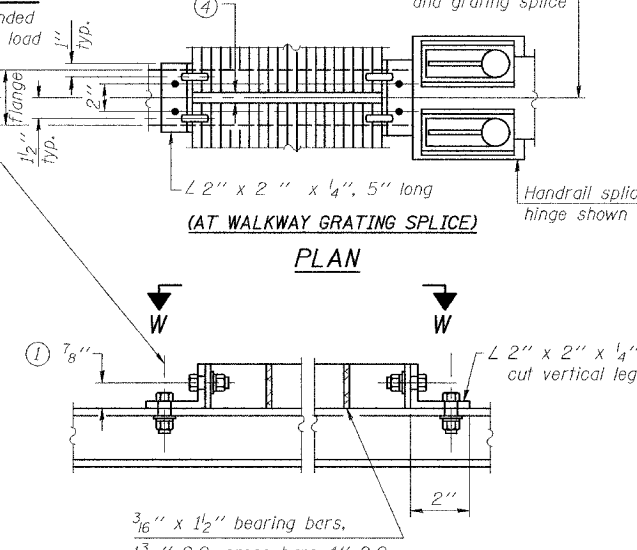
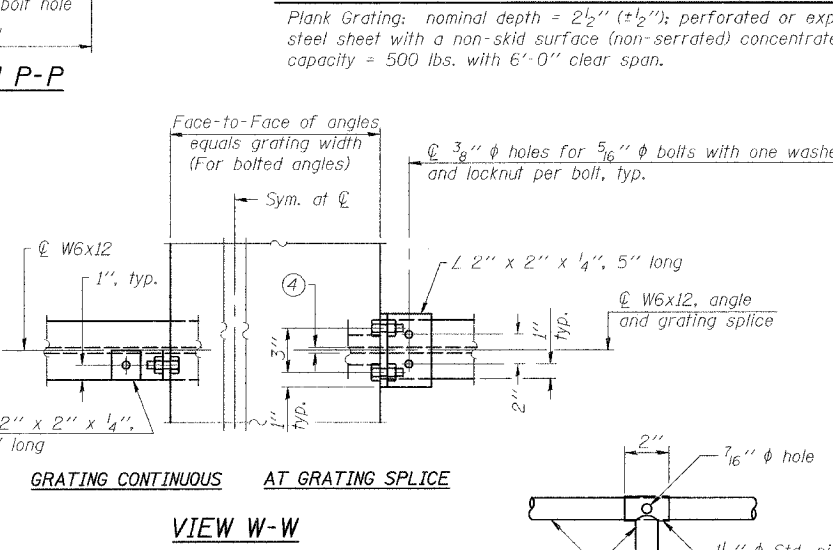
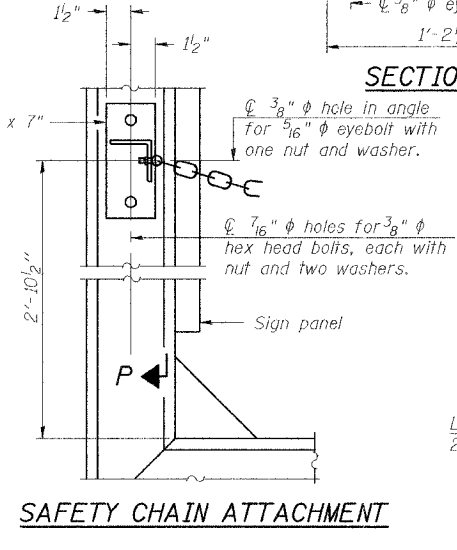
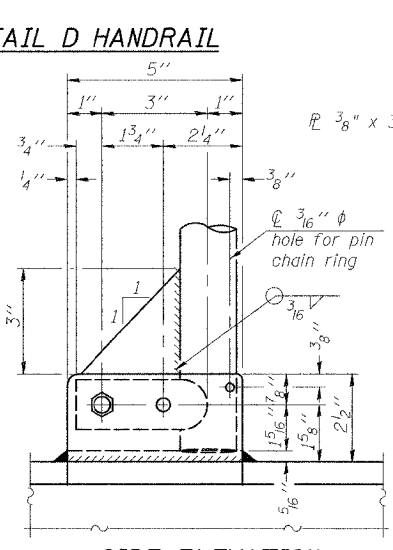
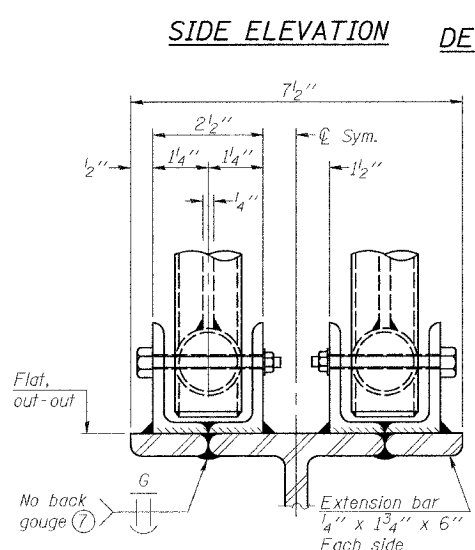
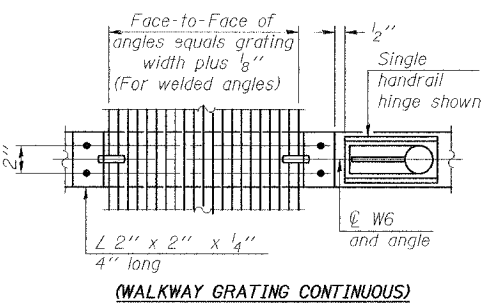
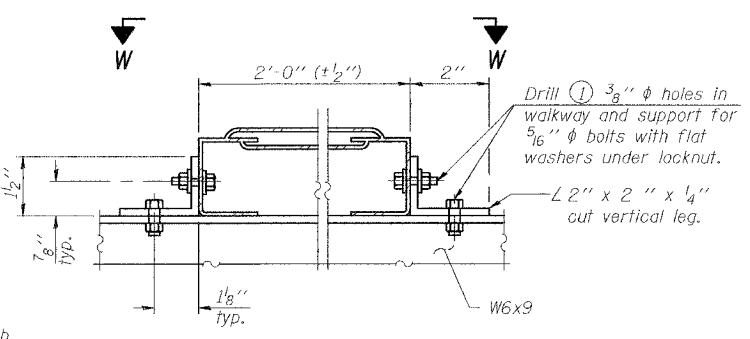
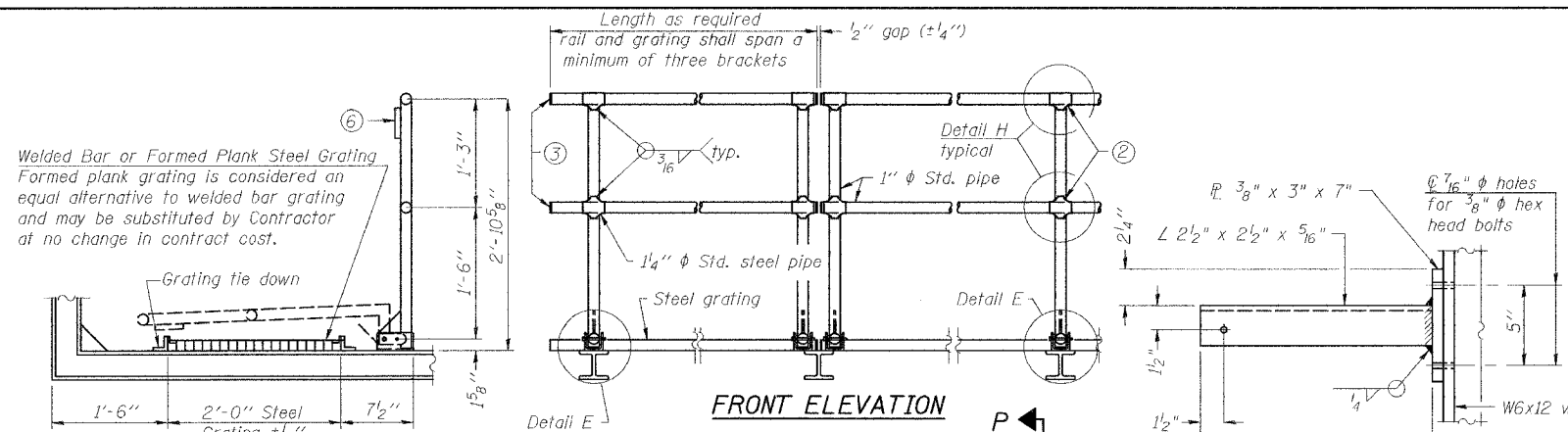


F.A.I. RTE.	SECTION	COUNTY	TOTAL SHEETS	SHEET NO.
57	0X1-6-2H8K	WILLIAMSON	272	130
STA.		TO STA.		
FED. ROAD DIST. NO. 9		ILLINOIS		FED. AID PROJECT



NUMBER	REVISION	DATE

- Drilling holes in grating may be done in shop or field, based on Contractor's preference and subject to accurate alignment. Field drilled holes must be touched up with galvanized paint.
- Horizontal rail member shall be continuous thru 1 1/4" diameter pipe. Provide 7/16" diameter hole in 1 1/4" diameter pipe for 3/8" diameter bolt. Field drill 7/16" diameter hole in horizontal rail member. Provide washer and locknut for bolt. (Use 5/16" eyebolts in 7/16" diameter holes on top rail at ends only.)
- Install standard force-tilt end caps or weld 1/8" end plates with 1/8" c.f.w. and grind smooth. (All rail ends.)
- 3/8" (± 1/4") gap between grating panels at splice.
- Chain to be type 304L stainless steel suitable for prolonged exterior exposure. Approximately 3'-6" long chain per location. Maximum sag with handrail erected = 4".
- 1/8" x 1/2" x 2" welded to handrail posts to protect locations that contact grating.
- Extrusions may be used in lieu of details shown, with approval by Engineer.
- Field cut ends of light support channels shall be free of burrs or hazardous projections and coated with zinc-rich primer or equivalent.

ILLINOIS DEPARTMENT OF TRANSPORTATION

BRIDGE MOUNT SIGN STRUCTURES  
WALKWAY DETAILS

MORGAN AVENUE INTERCHANGE  
FAI ROUTE 57 WITH FAU ROUTE 9718  
WILLIAMSON COUNTY

SHEET 4 OF 4

SCALE: N/A

DATE: 3-19-2007

PLOT DATE = 3/16/2007  
 FILE NAME = P:\016820\016820.dgn  
 PLOT SCALE = 1/8" = 1'-0"  
 USER NAME = chester