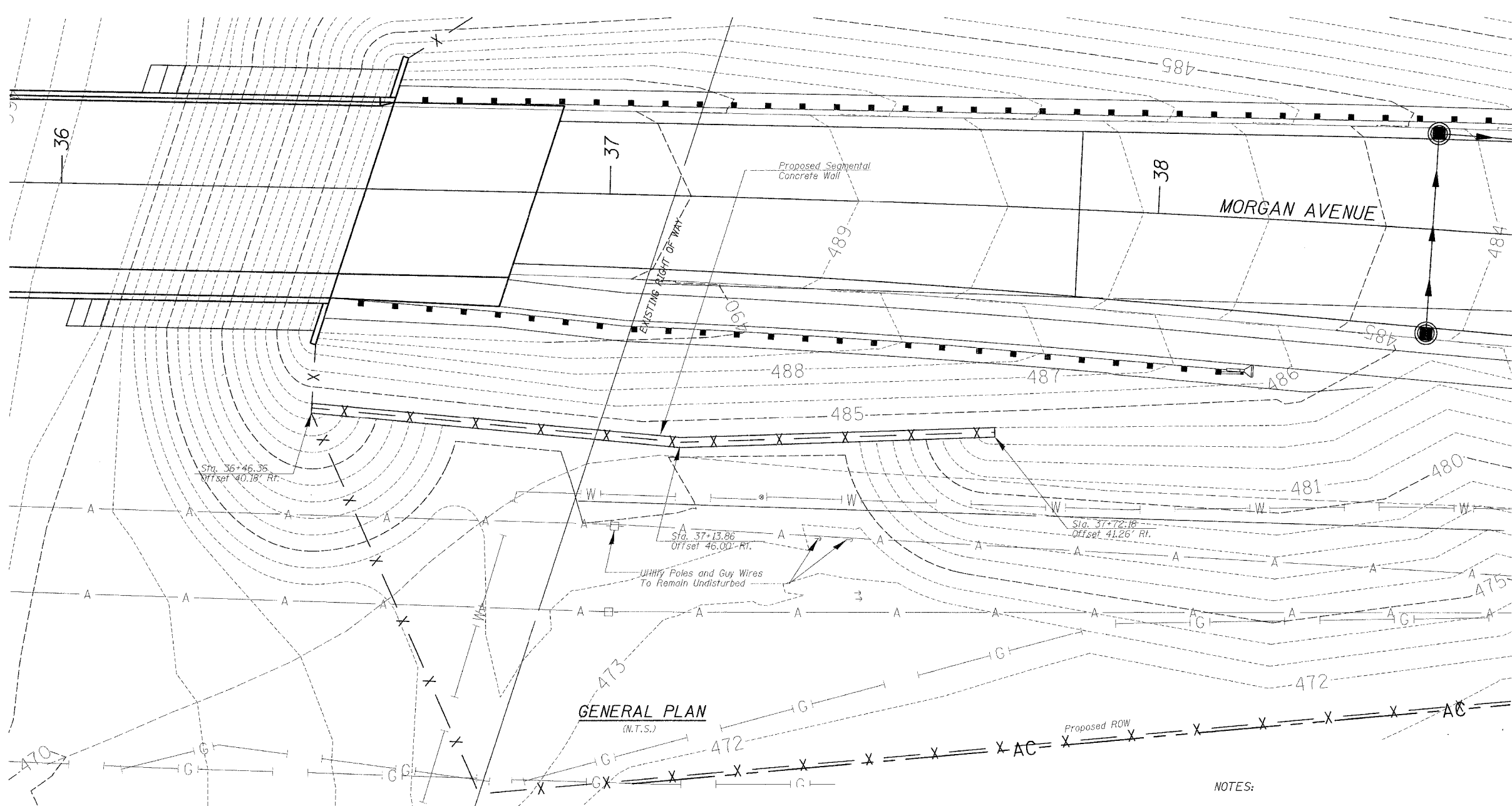
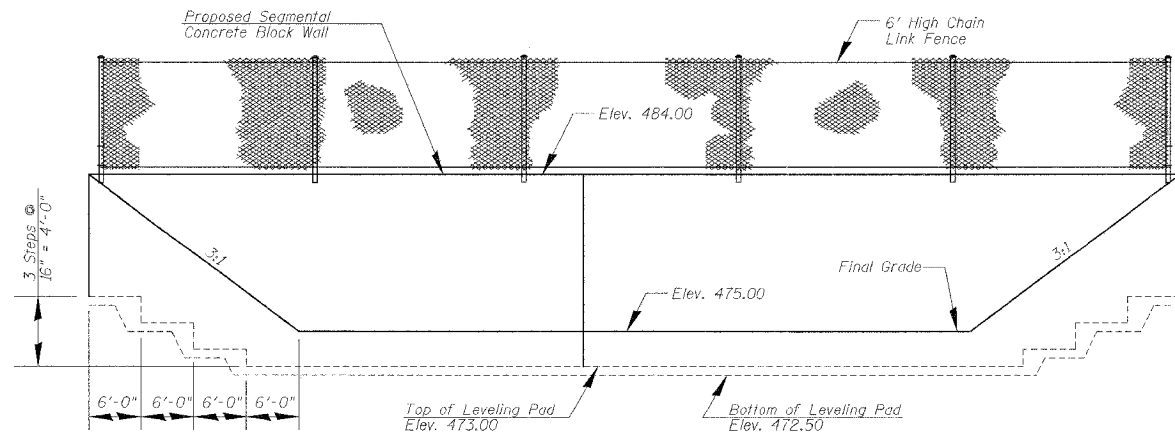


F.A.I. RTE.	SECTION	COUNTY	TOTAL SHEETS	SHEET NO.
57	(X1-6-2)HBK	WILLIAMSON	272	133
STA.		TO STA.		
FED. ROAD DIST. NO. 9		ILLINOIS	FED. AID PROJECT	



GENERAL PLAN
(N.T.S.)



ELEVATION

NOTES:

1. THE LEVELING PAD ELEVATIONS SHOWN ARE THE MINIMUM REQUIREMENTS. THE FINAL ELEVATIONS MAY BE DIFFERENT AS DETERMINED BY THE RETAINING WALL ENGINEER IN ACCORDANCE WITH THE REQUIREMENTS ON SHEET 2 OF 2 AND IN THE SPECIAL PROVISIONS.
2. THE AS-BUILT BOTTOM OF WALL STEPS MAY VARY FROM THOSE SHOWN ON THE ELEVATION AND SHALL BE AS DETAILED ON THE SRW CONSTRUCTION DRAWINGS AND IN ACCORDANCE WITH THE REQUIREMENTS ON SHEET 2 OF 2 AND THE REQUIREMENTS OF THE SPECIAL PROVISIONS. PAYMENT WILL BE MADE FOR THE CONTRACT QUANTITY, NOT THE AS-BUILT QUANTITY.
3. THE PROPOSED ROW IS APPROXIMATELY 105' RT. OF MORGAN AVENUE @ (SEE ROW PLANS)

REVISIONS	
NAME	DATE

ILLINOIS DEPARTMENT OF TRANSPORTATION
**SEGMENTAL CONCRETE BLOCK WALL
 PLAN AND ELEVATION**
 MORGAN AVENUE INTERCHANGE
 F&P ROUTE 57 WITH FAJ ROUTE 9718
 WILLIAMSON COUNTY

SCALE: NONE
 DATE: 3-19-2007
 DRAWN BY: KBF
 CHECKED BY: ALN

PLOT DATE = 3/23/2007
 FILE NAME = F:\046600\46600.dgn
 PLOT SCALE = 1/8" = 1'-0"
 USER NAME = chester