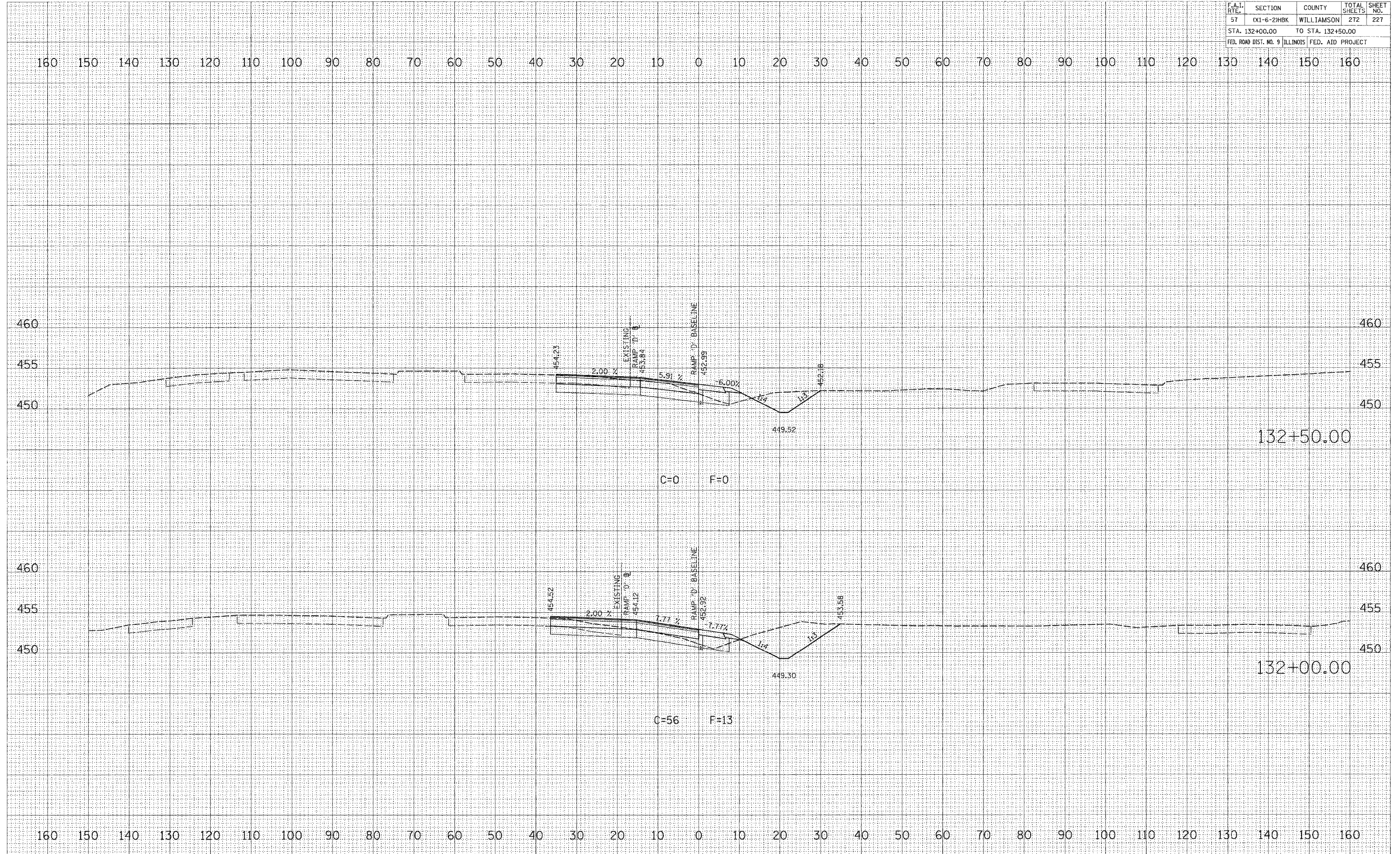


F.A.I. RTE.	SECTION	COUNTY	TOTAL SHEETS	SHEET NO.
57	01-6-2HBK	WILLIAMSON	272	227
STA. 132+00.00		TO STA. 132+50.00		
FED. ROAD DIST. NO. 9		ILLINOIS FED. AID PROJECT		



DATE	BY
SURVEYED	BY
NOTE BOOK	NO.
AREAS CHECKED	

DATE	BY
SURVEYED	BY
NOTE BOOK	NO.
AREAS CHECKED	

PLOT DATE = 3/20/2007
 FILE NAME = F:\046500\dgn\046500-ramp.dwg
 PLOT SCALE = 1/8" = 1' / in.
 USER NAME = dgarner

RAMP "D" CROSS SECTIONS