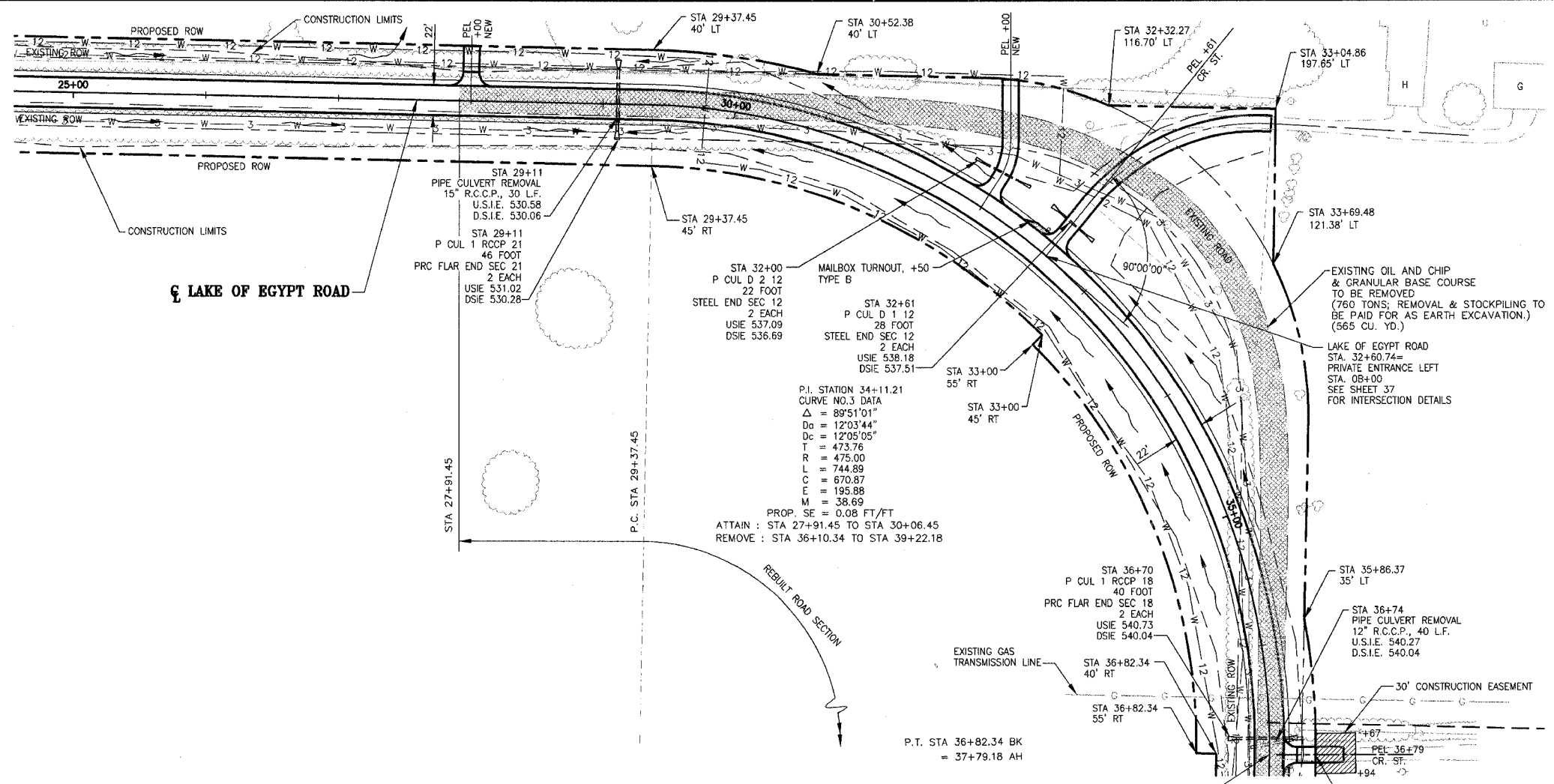
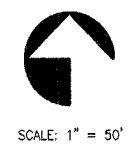


|             |                |                    |              |           |
|-------------|----------------|--------------------|--------------|-----------|
| ROUTE NO.   | SECTION        | COUNTY             | TOTAL SHEETS | SHEET NO. |
| F.A.S. 2904 | 97-00089-00-RS | WILLIAMSON         | 86           | 10        |
| ILLINOIS    |                | LAKE OF EGYPT ROAD |              |           |

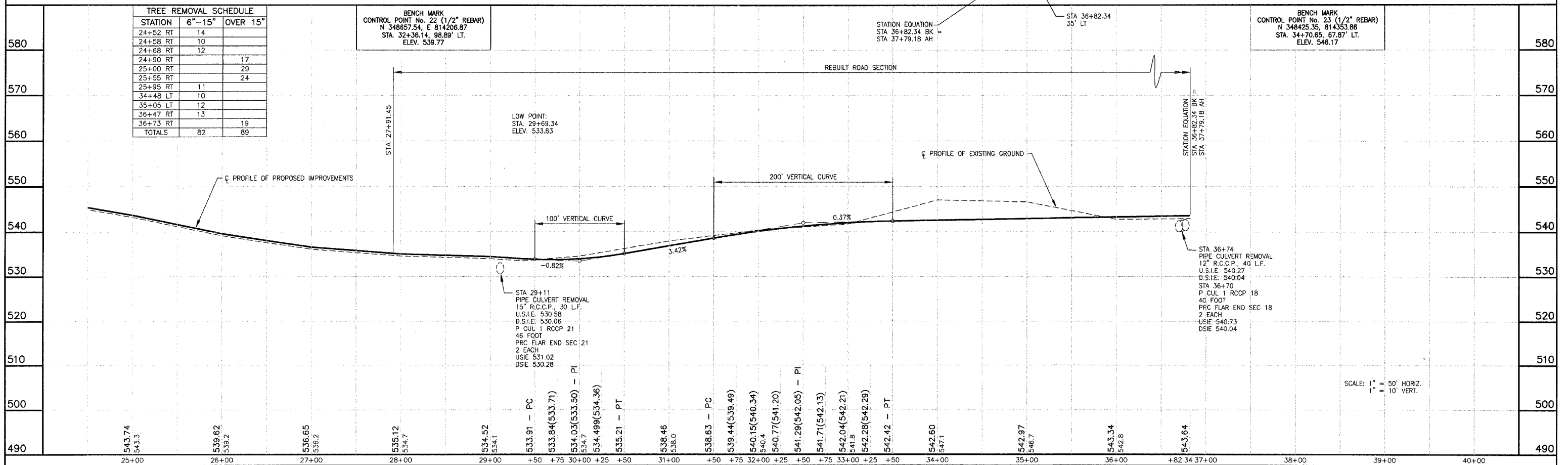
CONTRACT NO. 99199



| STATION  | 6" - 15" | OVER 15" |
|----------|----------|----------|
| 24+52 RT | 14       |          |
| 24+58 RT | 10       |          |
| 24+68 RT | 12       |          |
| 24+90 RT |          | 17       |
| 25+00 RT |          | 29       |
| 25+55 RT |          | 24       |
| 25+95 RT | 11       |          |
| 34+48 LT | 10       |          |
| 35+05 LT | 12       |          |
| 36+47 RT | 13       |          |
| 36+73 RT |          | 19       |
| TOTALS   | 82       | 89       |

BENCH MARK  
CONTROL POINT No. 22 (1/2" REBAR)  
N 348657.54, E 814206.87  
STA. 32+36.14, 98.89' LT.  
ELEV. 538.77

BENCH MARK  
CONTROL POINT No. 23 (1/2" REBAR)  
N 348425.35, E 814353.86  
STA. 34+70.65, 67.87' LT.  
ELEV. 546.17



SCALE: 1" = 50' HORIZ.  
1" = 10' VERT.

LAKE OF EGYPT ROAD IMPROVEMENTS - PLAN AND PROFILE - STA 24+50 TO STA 36+82.34

PROJECT No. 00044  
SHT. 10 OF 86