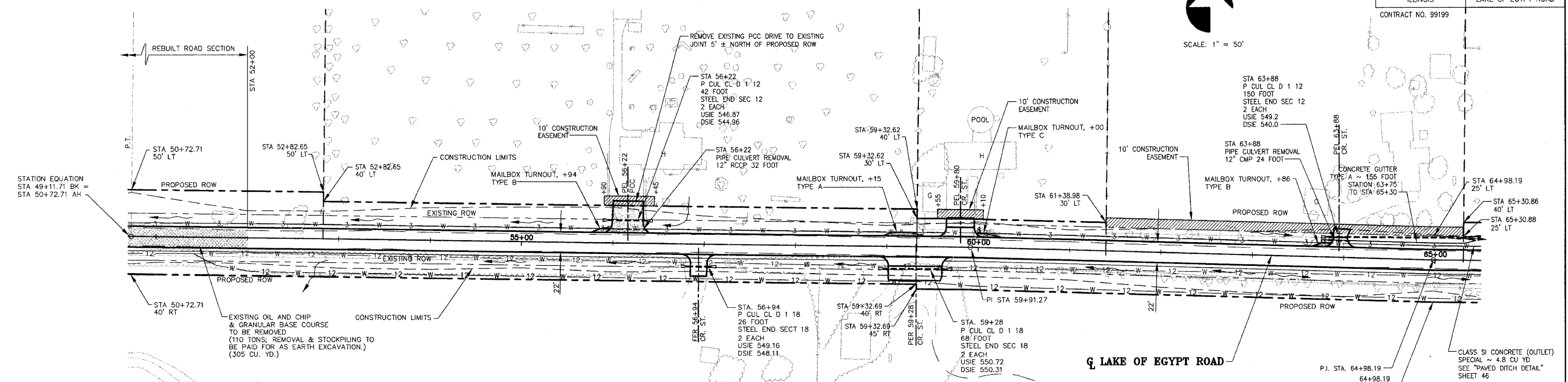
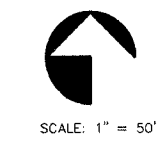


CONTRACT NO. 99199



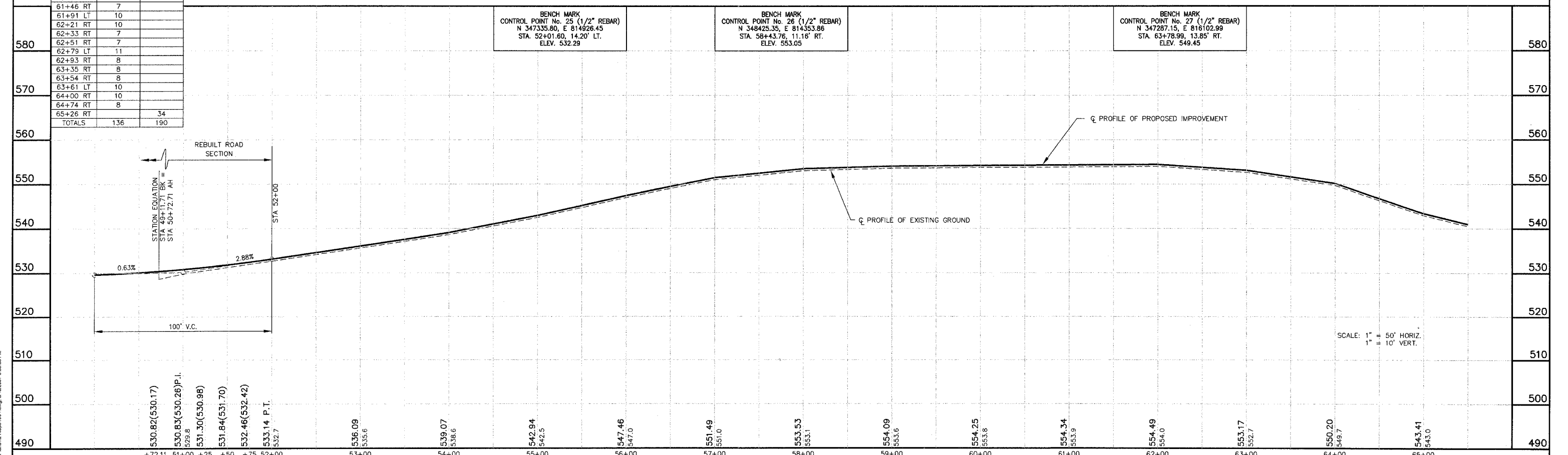
TREE REMOVAL SCHEDULE		
STATION	6"-15"	OVER 15"
51+22 LT		43
52+57 LT		19
58+30 RT		16
58+30 RT		17
58+50 RT		22
58+60 RT		17
59+23 RT		22
59+58 RT	12	
59+58 RT	12	
60+31 RT	8	
61+46 RT	7	
61+91 LT	10	
62+21 RT	10	
62+33 RT	7	
62+51 RT	7	
62+79 LT	11	
62+93 RT	8	
63+35 RT	8	
63+54 RT	8	
63+61 LT	10	
64+00 RT	10	
64+74 RT	8	
65+26 RT		34
TOTALS	136	190

EXISTING OIL AND CHIP & GRANULAR BASE COURSE TO BE REMOVED (110 TONS; REMOVAL & STOCKPILING TO BE PAID FOR AS EARTH EXCAVATION.) (305 CU. YD.)

BENCH MARK
CONTROL POINT No. 25 (1/2" REBAR)
N 347335.80, E 814926.45
STA. 52+01.60, 14.20' LT.
ELEV. 532.29

BENCH MARK
CONTROL POINT No. 26 (1/2" REBAR)
N 348425.35, E 814353.86
STA. 58+43.76, 11.16' RT.
ELEV. 553.05

BENCH MARK
CONTROL POINT No. 27 (1/2" REBAR)
N 347287.15, E 816102.99
STA. 63+78.99, 13.85' RT.
ELEV. 549.45



SCALE: 1" = 50' HORIZ.
1" = 10' VERT.

LAKE OF EGYPT ROAD IMPROVEMENTS - PLAN AND PROFILE - STA EQ 49+11.71 BK = 50+72.71 AH TO STA 65+50

P:\00044\Combined Plans\12_R2\001.dwg, 3/15/2007 3:35:53 PM