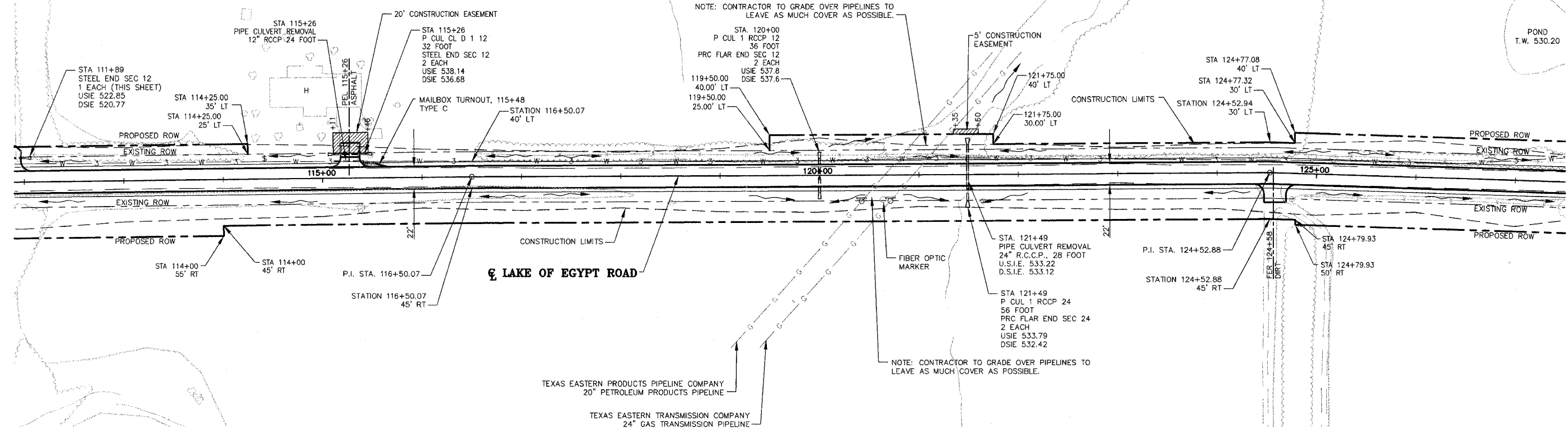
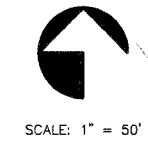


CONTRACT NO. 99199

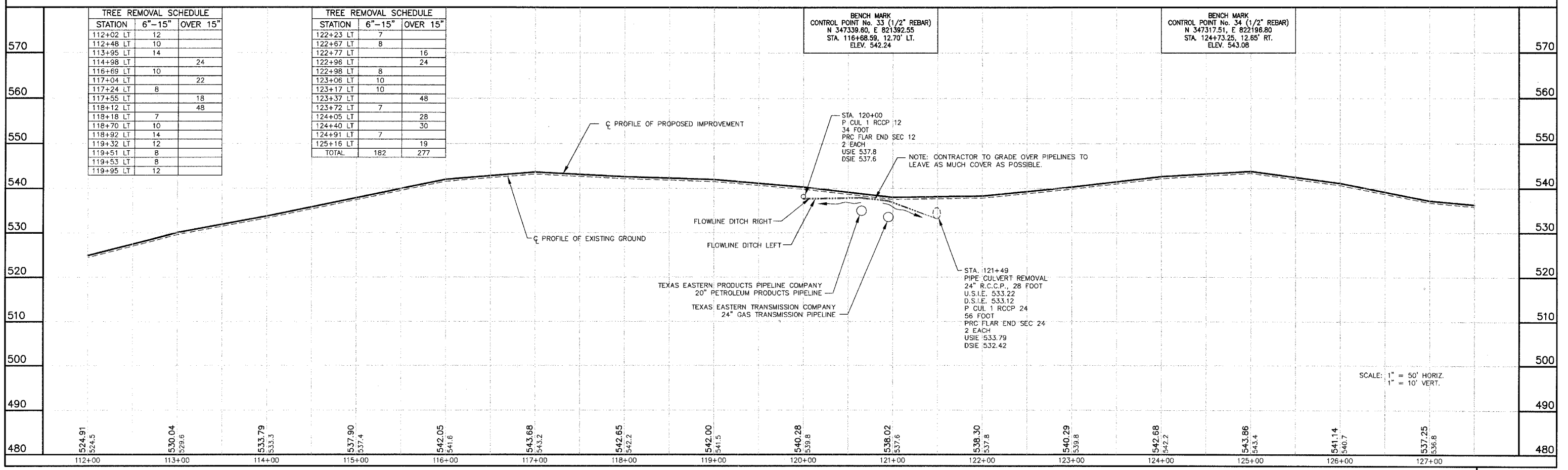


TREE REMOVAL SCHEDULE		
STATION	6"-15"	OVER 15"
112+02 LT	12	
112+48 LT	10	
113+95 LT	14	
114+98 LT		24
116+69 LT	10	
117+04 LT		22
117+24 LT	8	
117+55 LT		18
118+12 LT		48
118+18 LT	7	
118+70 LT	10	
118+92 LT	14	
119+32 LT	12	
119+51 LT	8	
119+53 LT	8	
119+95 LT	12	

TREE REMOVAL SCHEDULE		
STATION	6"-15"	OVER 15"
122+23 LT	7	
122+67 LT	8	
122+77 LT		16
122+96 LT		24
122+98 LT	8	
123+06 LT	10	
123+17 LT	10	
123+37 LT		48
123+72 LT	7	
124+05 LT		28
124+40 LT		30
124+91 LT	7	
125+16 LT		19
TOTAL	182	277

BENCH MARK
CONTROL POINT No. 33 (1/2" REBAR)
N 347339.80, E 821392.55
STA. 116+68.59, 12.70' LT.
ELEV. 542.24

BENCH MARK
CONTROL POINT No. 34 (1/2" REBAR)
N 347317.51, E 822196.80
STA. 124+73.25, 12.65' RT.
ELEV. 543.08



SCALE: 1" = 50' HORIZ.
1" = 10' VERT.

LAKE OF EGYPT ROAD IMPROVEMENTS – PLAN AND PROFILE – STA 112+00 TO STA 127+50

P:\00044\Combined Plans\19_RCP\05001.dwg, 3/15/2007, 3:50:06 PM