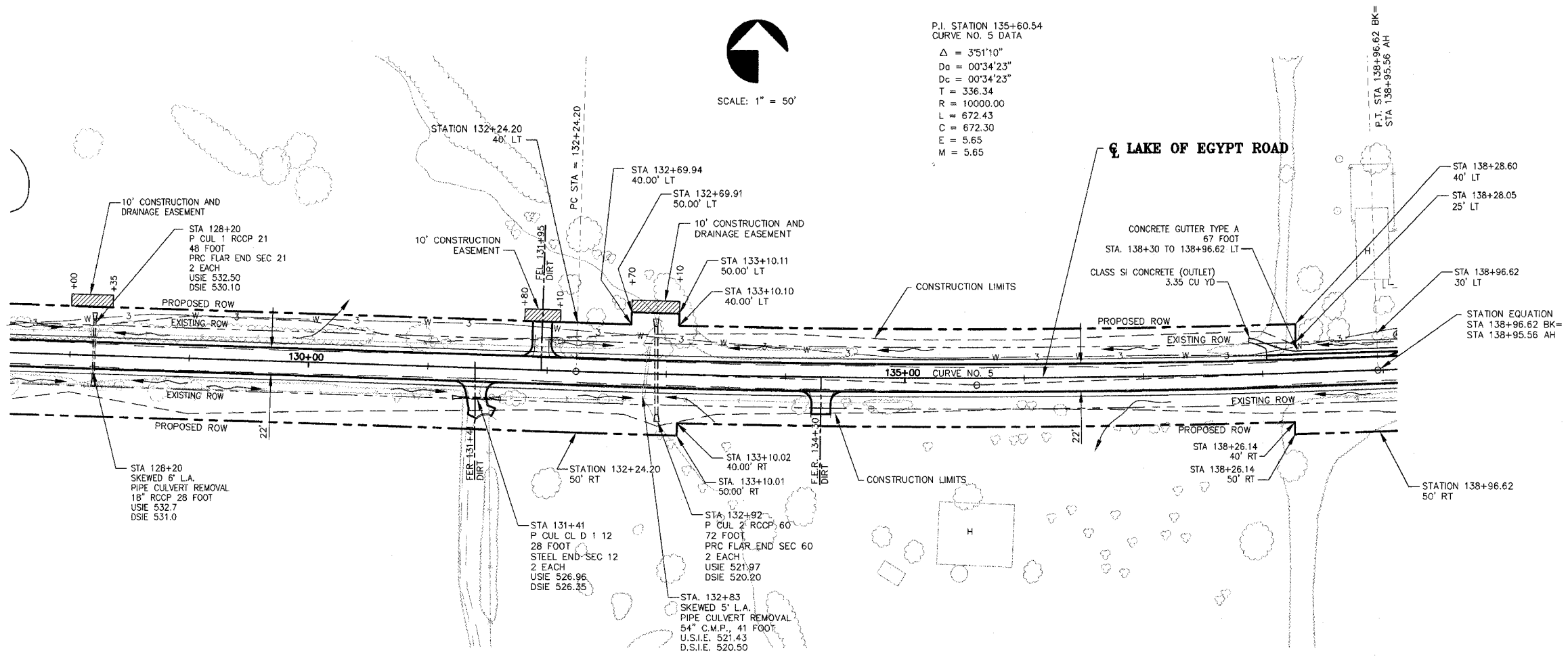


P.I. STATION 135+60.54
 CURVE NO. 5 DATA
 $\Delta = 3^{\circ}51'10"$
 $D_a = 00^{\circ}34'23"$
 $D_c = 00^{\circ}34'23"$
 $T = 336.34$
 $R = 10000.00$
 $L = 672.43$
 $C = 672.30$
 $E = 5.65$
 $M = 5.65$



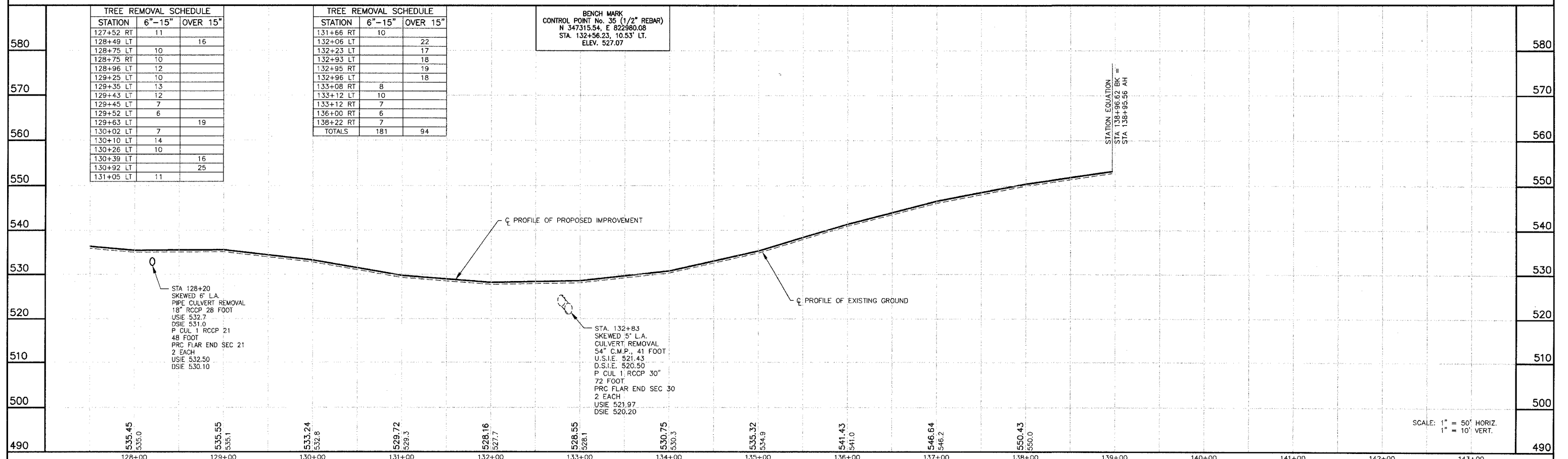
SCALE: 1" = 50'



TREE REMOVAL SCHEDULE		
STATION	6"-15"	OVER 15"
127+52 RT	11	
128+49 LT		16
128+75 LT	10	
128+75 RT	10	
128+96 LT	12	
129+25 LT	10	
129+35 LT	13	
129+43 LT	12	
129+45 LT	7	
129+52 LT	6	
129+63 LT		19
130+02 LT	7	
130+10 LT	14	
130+26 LT	10	
130+39 LT		16
130+92 LT		25
131+05 LT	11	

TREE REMOVAL SCHEDULE		
STATION	6"-15"	OVER 15"
131+66 RT	10	
132+06 LT		22
132+23 LT		17
132+93 LT		18
132+95 RT		19
132+96 LT		18
133+08 RT	8	
133+12 LT	10	
133+12 RT	7	
136+00 RT	6	
138+22 RT	7	
TOTALS	181	94

BENCH MARK
 CONTROL POINT No. 35 (1/2" REBAR)
 N 347315.54, E 822960.08
 STA. 132+56.23, 10.53' LT.
 ELEV. 527.07



SCALE: 1" = 50' HORIZ.
 1" = 10' VERT.

LAKE OF EGYPT ROAD IMPROVEMENTS - PLAN AND PROFILE - STA 127+50 TO STA EQ 138+96.62 BK = 138+95.96 AH

P:\00044\Combined Plans\17 RCP\0801.dwg, 2/15/2007, 3:29:00 PM