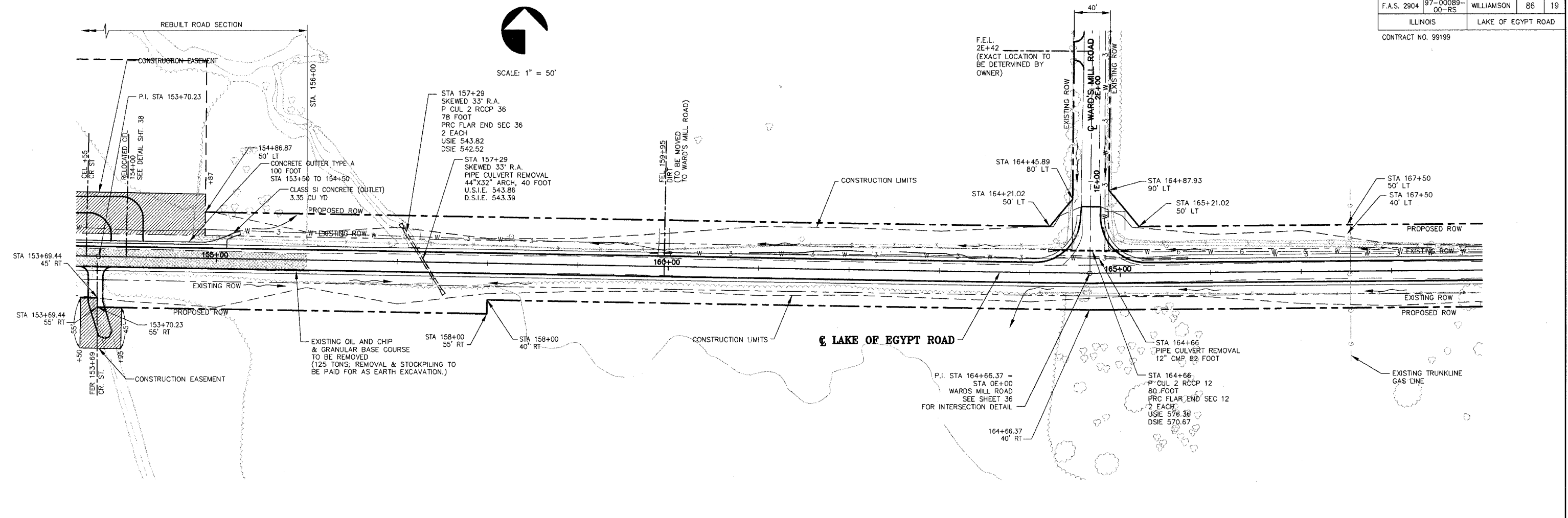
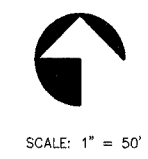


ROUTE NO.	SECTION	COUNTY	TOTAL SHEETS	SHEET NO.
F.A.S. 2904	97-00089-00-RS	WILLIAMSON	86	19
ILLINOIS		LAKE OF EGYPT ROAD		

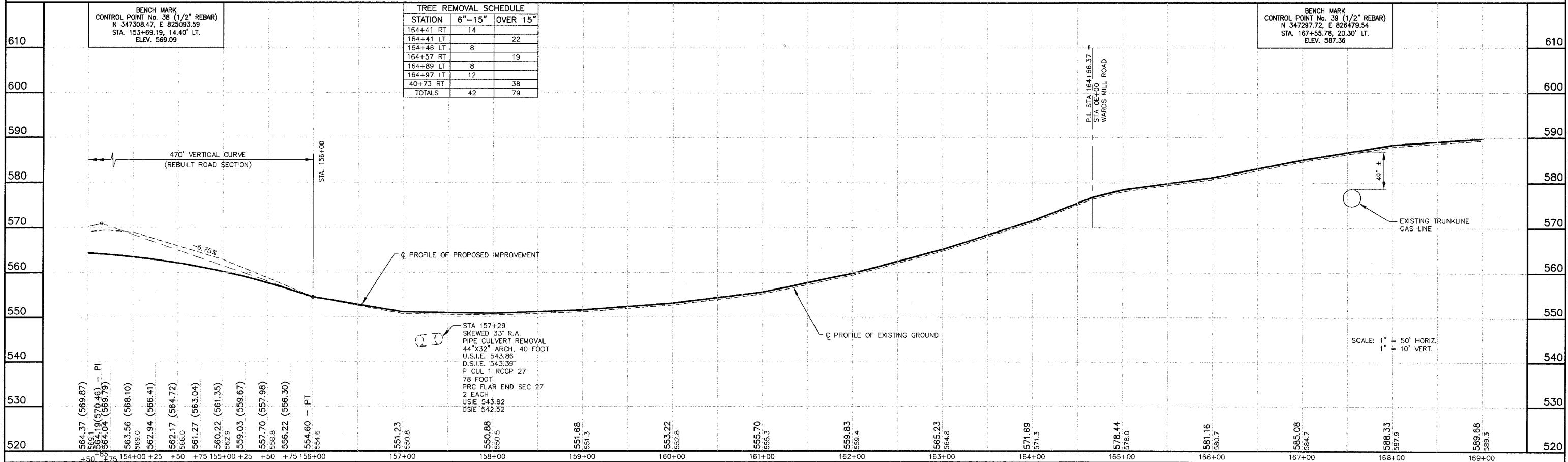
CONTRACT NO. 99199



STATION	6"-15"	OVER 15"
164+41 RT	14	
164+41 LT		22
164+46 LT	8	
164+57 RT		19
164+89 LT	8	
164+97 LT	12	
40+73 RT		38
TOTALS	42	79

BENCH MARK  
CONTROL POINT No. 38 (1/2" REBAR)  
N 347308.47, E 825093.59  
STA. 153+69.19, 14.40' LT.  
ELEV. 569.09

BENCH MARK  
CONTROL POINT No. 39 (1/2" REBAR)  
N 347297.72, E 826479.54  
STA. 167+55.78, 20.30' LT.  
ELEV. 587.36



LAKE OF EGYPT ROAD IMPROVEMENTS - PLAN AND PROFILE - STA 153+50 TO STA 169+00

PROJECT No. 00044  
SHT. 19 OF 86

P:\00044\Combined Plan\1181210202.dwg, 3/15/2007 3:26:40 PM