

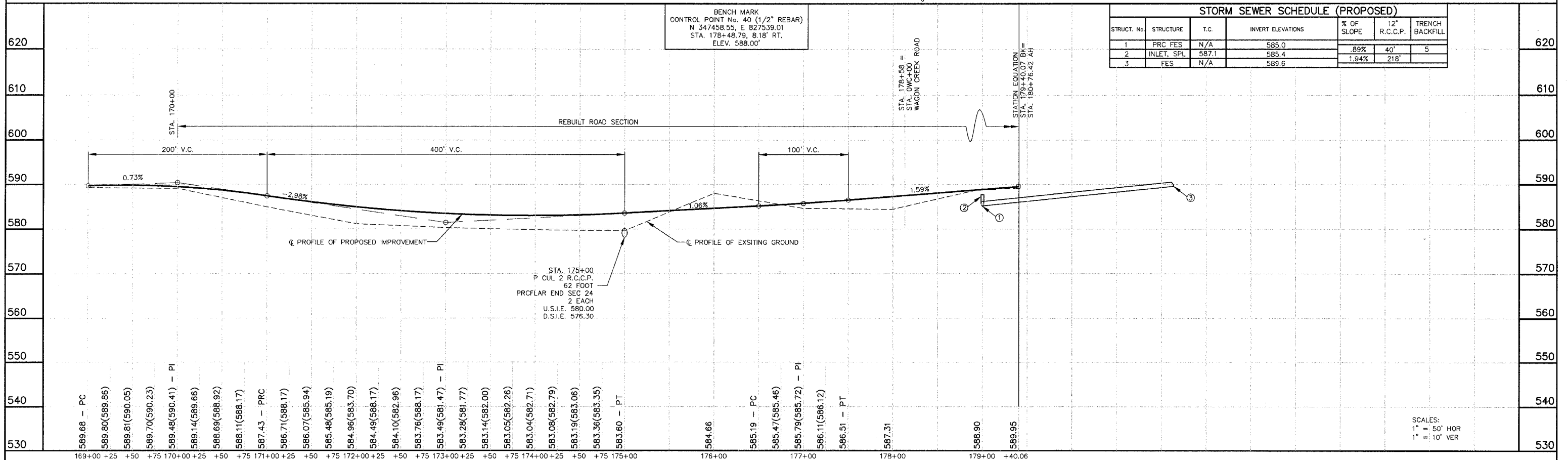
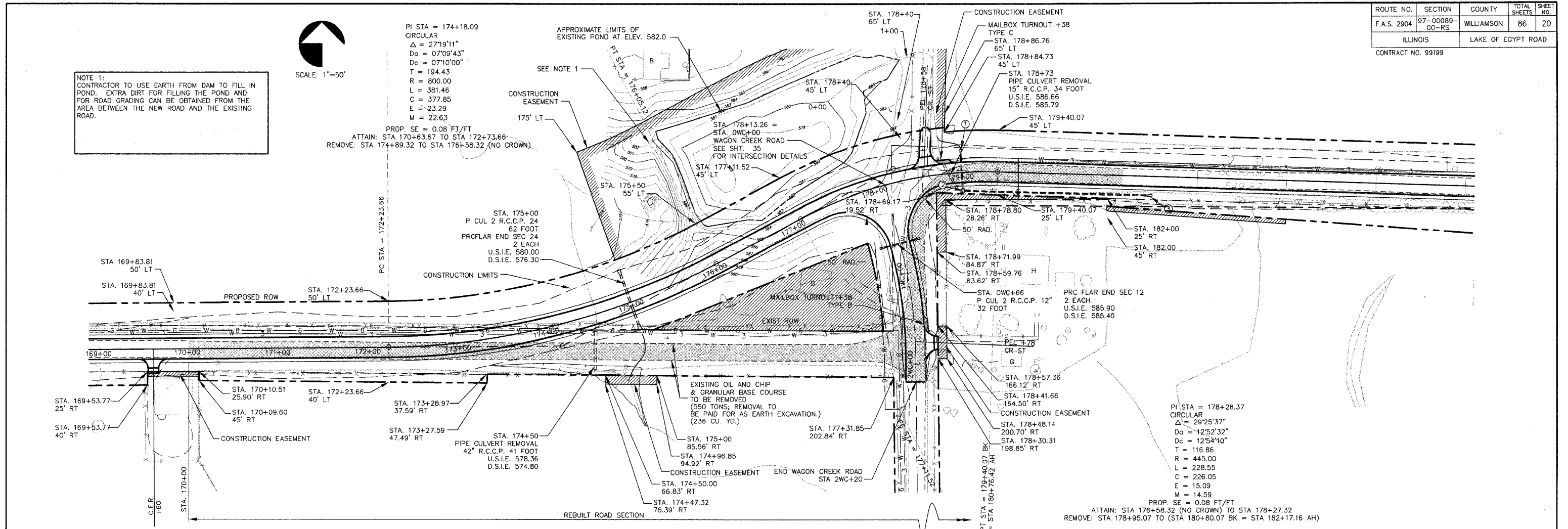


SCALE: 1"=50'

NOTE 1:
CONTRACTOR TO USE EARTH FROM DAM TO FILL IN POND. EXTRA DIRT FOR FILLING THE POND AND FOR ROAD GRADING CAN BE OBTAINED FROM THE AREA BETWEEN THE NEW ROAD AND THE EXISTING ROAD.

PI STA = 174+18.09
CIRCULAR
Δ = 27°19'11"
D_a = 07°09'43"
D_c = 07°10'00"
T = 194.43
R = 800.00
L = 381.46
C = 377.85
E = 23.29
M = 22.63

PROP. SE = 0.08 FT/FT
ATTAIN: STA 170+63.67 TO STA 172+73.66
REMOVE: STA 174+89.32 TO STA 176+58.32 (NO CROWN)



STRUCT. No.	STRUCTURE	T.C.	INVERT ELEVATIONS	% OF SLOPE	12\"/>
1	PRC FES	N/A	585.0	.89%	40'
2	INLET SPL	587.1	585.4	1.94%	218'
3	FES	N/A	589.6		

BENCH MARK
CONTROL POINT No. 40 (1/2\"/>

SCALES:
1\"/>

LAKE OF EGYPT ROAD IMPROVEMENTS - PLAN AND PROFILE - STATION 169+00 TO 179+40.07 BK = 180+76.59 AH