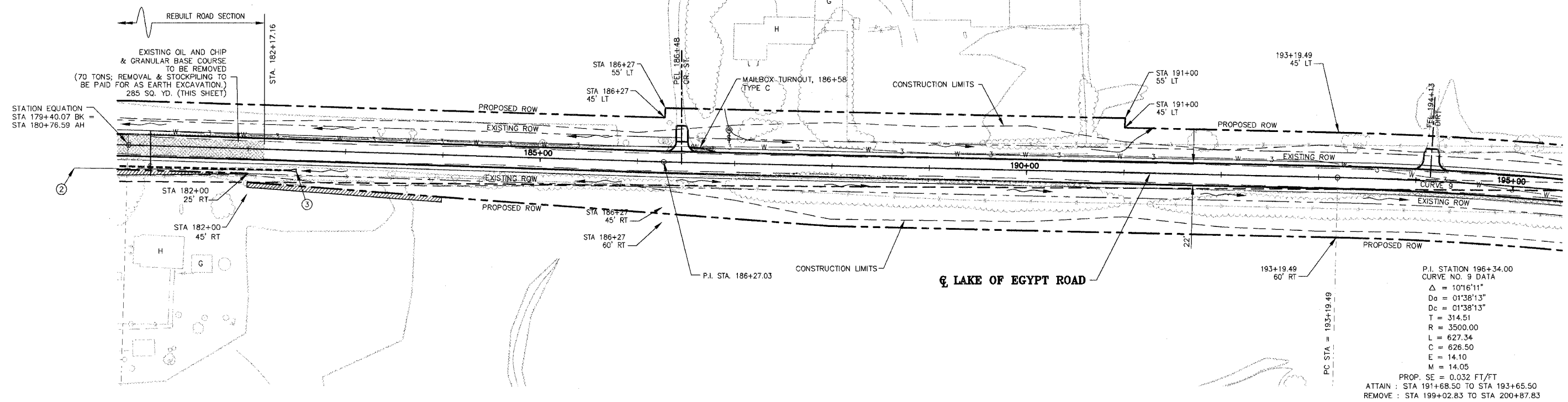


ROUTE NO.	SECTION	COUNTY	TOTAL SHEETS	SHEET NO.
F.A.S. 2904	97-00089-00-RS	WILLIAMSON	86	21
ILLINOIS		LAKE OF EGYPT ROAD		

CONTRACT NO. 99199



SCALE: 1" = 50'



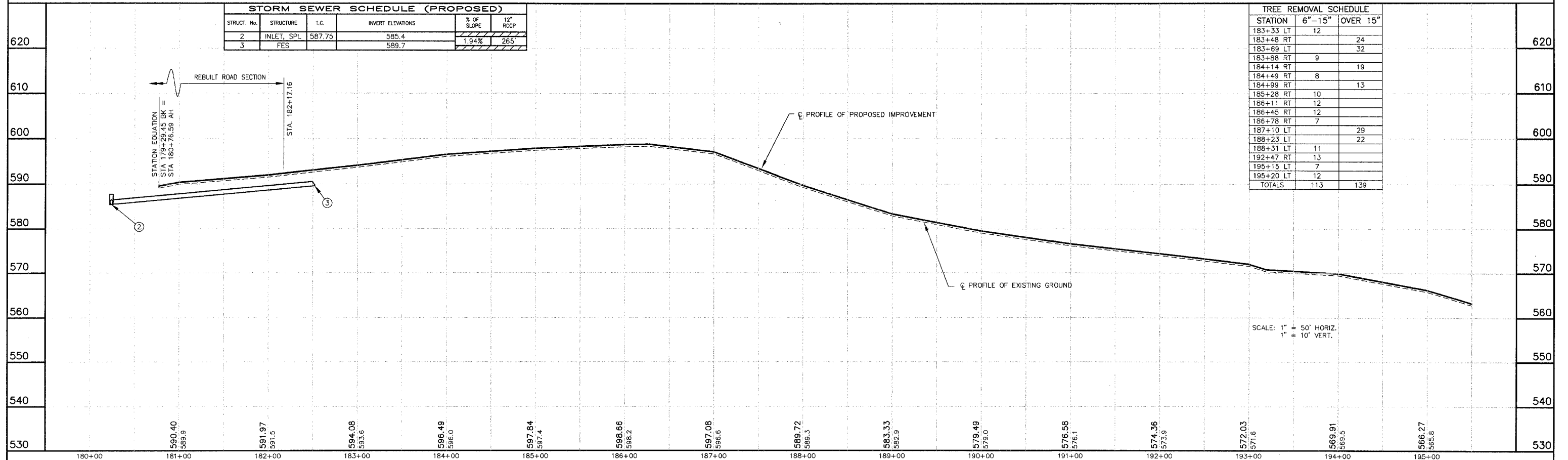
P.I. STATION 196+34.00
 CURVE NO. 9 DATA
 $\Delta = 101'6''11''$
 $D_0 = 01'38''13''$
 $D_c = 01'38''13''$
 $T = 314.51$
 $R = 3500.00$
 $L = 627.34$
 $C = 626.50$
 $E = 14.10$
 $M = 14.05$
 PROP. SE = 0.032 FT/FT
 ATTAIN : STA 191+68.50 TO STA 193+65.50
 REMOVE : STA 199+02.83 TO STA 200+87.83

STORM SEWER SCHEDULE (PROPOSED)

STRUCT. No.	STRUCTURE	T.C.	INVERT ELEVATIONS	% OF SLOPE	12" RCCP
2	INLET SPL	587.75	585.4	1.94%	265'
3	FES	589.7	589.7		

TREE REMOVAL SCHEDULE

STATION	6"-15"	OVER 15"
183+33 LT	12	
183+48 RT		24
183+69 LT		32
183+88 RT	9	
184+14 RT		19
184+49 RT	8	
184+99 RT		13
185+28 RT	10	
186+11 RT	12	
186+45 RT	12	
186+78 RT	7	
187+10 LT		29
188+23 LT		22
188+31 LT	11	
192+47 RT	13	
195+15 LT	7	
195+20 LT	12	
TOTALS	113	139



SCALE: 1" = 50' HORIZ.
 1" = 10' VERT.

LAKE OF EGYPT ROAD IMPROVEMENTS - PLAN AND PROFILE - STA EQ 179+40.07 BK = 180+76.59 AH TO STA 195+50

P:\0044\Combined Plans\01 - RCP\1003.dwg, 3/15/2007 3:15:06 PM