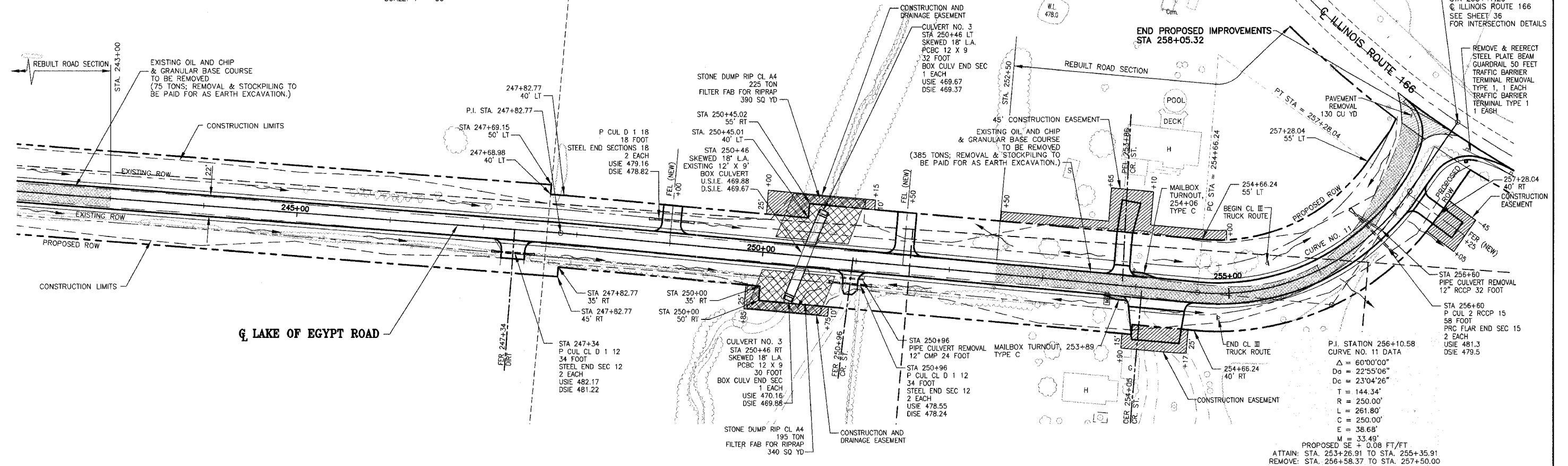
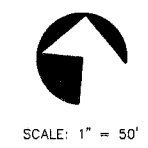


ROUTE NO.	SECTION	COUNTY	TOTAL SHEETS	SHEET NO.
F.A.S. 2904	97-00089-00-RS	WILLIAMSON	86	25
ILLINOIS		LAKE OF EGYPT ROAD		

CONTRACT NO. 99199



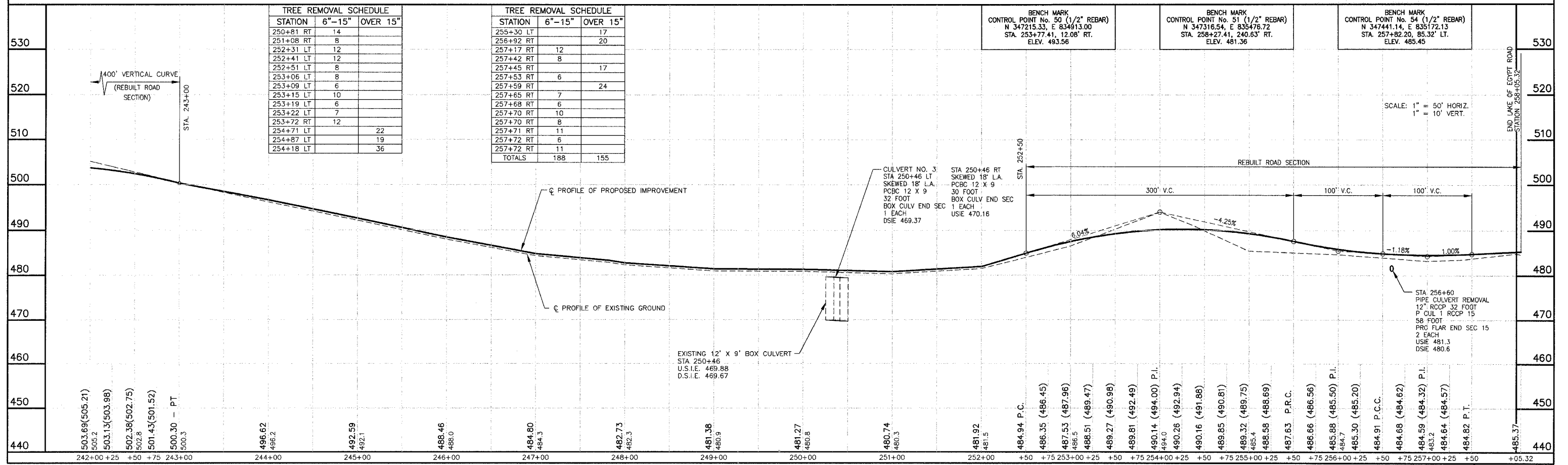
TREE REMOVAL SCHEDULE

STATION	6\"-15\"	OVER 15\"
250+81 RT	14	
251+08 RT	8	
252+31 LT	12	
252+41 LT	12	
252+51 LT	8	
253+06 LT	8	
253+09 LT	6	
253+15 LT	10	
253+19 LT	6	
253+22 LT	7	
253+72 RT	12	
254+71 LT		22
254+87 LT		19
254+18 LT		36

TREE REMOVAL SCHEDULE

STATION	6\"-15\"	OVER 15\"
255+30 LT		17
256+92 RT		20
257+17 RT	12	
257+42 RT	8	
257+45 RT		17
257+53 RT	6	
257+59 RT		24
257+65 RT	7	
257+68 RT	6	
257+70 RT	10	
257+70 RT	8	
257+71 RT	11	
257+72 RT	6	
257+72 RT	11	
TOTALS	188	155

<p>BENCH MARK CONTROL POINT No. 50 (1/2\" REBAR) N 347215.33, E 834913.00 STA. 253+77.41, 12.08' RT. ELEV. 493.56</p>	<p>BENCH MARK CONTROL POINT No. 51 (1/2\" REBAR) N 347316.54, E 835478.72 STA. 258+27.41, 240.63' RT. ELEV. 481.36</p>	<p>BENCH MARK CONTROL POINT No. 54 (1/2\" REBAR) N 347441.14, E 835172.13 STA. 257+82.20, 85.32' LT. ELEV. 485.45</p>
---	--	---



LAKE OF EGYPT ROAD IMPROVEMENTS - PLAN AND PROFILE - STA 242+00 TO STA 258+17.23

PROJECT No. 00044
SHT. 25 OF 86

P:\0044\Combined Plans\25 RCP\25 RCP.dwg, 3/16/2007 2:07:50 PM