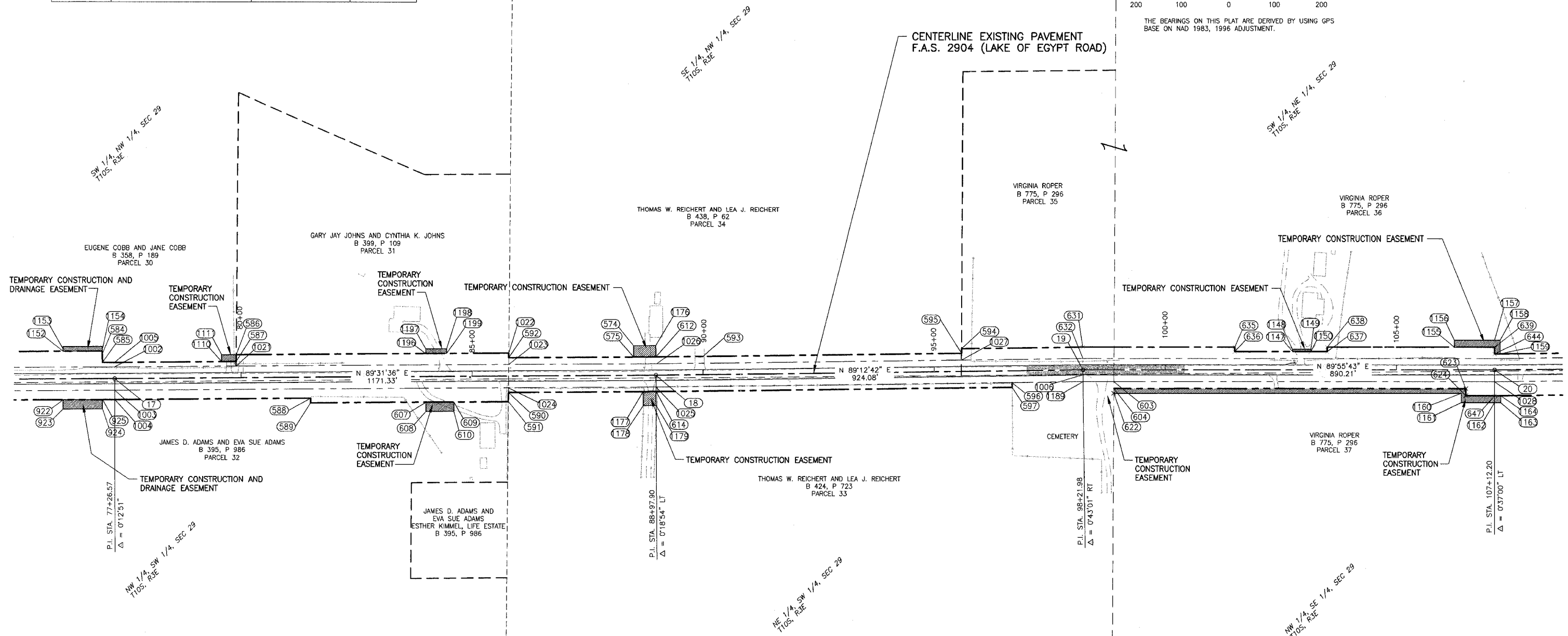
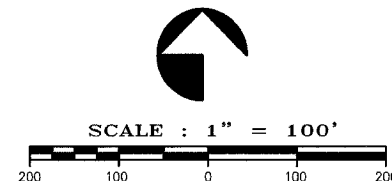


PARCEL NO.	NAME	PURPOSE	ACREAGE
30	EUGENE AND JANE COBB	NEW R.O.W.	0.412 AC.
31	GARY JAY AND CYNTHIA K. JOHNS	NEW R.O.W.	0.339 AC.
32	JAMES D. AND EVA SUE ADAMS	NEW R.O.W.	0.675 AC.
33	THOMAS W. AND LEA J. REICHERT	NEW R.O.W.	0.337 AC.
34	THOMAS W. AND LEA J. REICHERT	NEW R.O.W.	0.250 AC.
35	VIRGINIA ROPER	NEW R.O.W.	0.189 AC.
36	VIRGINIA ROPER	NEW R.O.W.	0.550 AC.
37	VIRGINIA ROPER	NEW R.O.W.	0.892 AC.

ROUTE NO.	SECTION	COUNTY	TOTAL SHEETS	SHEET NO.
F.A.S. 2904	97-00089-00-RS	WILLIAMSON	86	28
ILLINOIS		LAKE OF EGYPT ROAD		

CONTRACT NO. 99199



POINT NO.	NORTHING	EASTING	STATION	OFFSET
17	347292.71	817450.37	77+26.63	0.00 R
18	347302.39	818621.66	88+97.96	0.00 L
19	347315.10	819545.66	98+22.05	0.00 L
20	347316.21	820435.87	107+12.26	0.00 L
574	347366.98	818573.22	88+50.00	60.00 L
575	347341.99	818573.43	88+50.00	40.00 L
584	347352.55	817423.53	77+00.00	60.00 L
585	347327.59	817423.64	77+00.00	35.00 L
586	347344.88	817713.02	79+89.70	50.00 L
587	347329.88	817713.14	79+89.70	35.00 L
588	347251.21	817874.16	81+50.00	45.00 R
589	347241.21	817874.24	81+50.00	55.00 R
590	347264.75	818302.40	85+78.34	35.00 R
591	347244.75	818302.28	85+78.11	55.00 R
592	347339.75	818302.93	85+79.49	40.00 L
593	347343.79	818723.20	90+00.00	40.00 L
594	347361.49	819282.78	95+59.83	50.00 L
595	347351.49	819282.91	95+59.83	40.00 L
596	347287.99	819392.22	96+68.25	25.00 R
597	347277.99	819392.43	96+68.26	35.00 R
603	347290.18	819612.48	98+88.84	25.00 R
604	347275.18	819612.42	98+88.70	40.00 R
605	347762.57	814379.34	42+13.39	50.00 L
606	347762.13	814374.36	42+13.39	45.00 L
607	347243.27	818124.23	84+00.00	55.00 R
608	347223.27	818124.39	84+00.00	75.00 R
609	347243.77	818184.23	84+60.00	55.00 R
610	347223.77	818184.39	84+60.00	75.00 R

POINT NO.	NORTHING	EASTING	STATION	OFFSET
612	347342.39	818621.33	88+98.12	40.00 L
614	347267.39	818621.95	88+97.90	35.00 R
622	347265.18	819612.39	98+88.65	50.00 R
623	347276.13	820373.73	106+50.00	40.00 R
624	347261.13	820373.74	106+50.00	55.00 R
631	347365.10	819545.28	98+21.73	50.00 L
632	347290.10	819545.99	98+21.73	25.00 R
635	347365.51	819873.61	101+50.00	50.00 L
636	347355.51	819873.63	101+50.00	40.00 L
637	347355.76	820073.63	103+50.00	40.00 L
638	347365.76	820073.61	103+50.00	50.00 L
639	347366.21	820435.81	107+12.79	50.00 L
644	347351.21	820435.82	107+12.63	35.00 L
647	347261.21	820435.94	107+12.26	55.00 R
922	347247.20	817339.00	76+18.00	45.00 R
923	347227.20	817339.09	76+18.00	65.00 R
924	347227.59	817424.09	77+00.00	65.00 R
925	347247.59	817424.00	77+00.00	45.00 R
1002	347317.71	817450.17	77+26.54	25.00 L
1004	347247.71	817450.74	77+26.57	45.00 R
1005	347327.71	817450.21	77+26.76	35.00 L
1006	347304.09	819545.73	98+22.05	11.86 L
1021	347319.88	817712.84	79+89.31	25.00 L
1022	347349.76	818303.00	85+79.70	50.00 L
1023	347324.75	818302.82	85+79.31	25.00 L
1024	347274.75	818302.45	85+78.53	25.00 R
1025	347277.39	818621.87	88+97.96	25.00 R
1026	347327.41	818623.42	89+00.00	25.00 L
1027	347336.48	819282.68	95+59.39	25.00 L
1028	347291.21	820435.90	107+12.26	25.00 R

POINT NO.	NORTHING	EASTING	STATION	OFFSET
1110	347329.63	817681.50	79+58.00	35.00 L
1111	347344.63	817681.38	79+58.00	50.00 L
1147	347355.66	819988.62	102+75.00	40.00 L
1148	347360.66	819988.62	102+75.00	45.00 L
1149	347360.71	820038.62	103+15.00	45.00 L
1150	347355.71	820038.62	103+15.00	40.00 L
1152	347347.20	817338.55	76+15.00	55.00 L
1153	347357.20	817338.51	76+15.00	65.00 L
1154	347357.55	817423.50	77+00.00	65.00 L
1155	347366.09	820348.61	106+20.00	50.00 R
1156	347381.09	820348.59	106+20.00	65.00 R
1157	347381.20	820435.78	107+12.20	65.00 R
1158	347381.35	820447.88	107+25.00	65.00 R
1159	347351.35	820447.88	107+25.00	35.00 R
1160	347266.12	820363.74	106+40.00	50.00 R
1161	347246.12	820363.76	106+40.00	70.00 R
1162	347246.20	820435.95	107+12.62	70.00 L
1163	347246.37	820449.50	107+25.00	70.00 L
1164	347261.36	820449.50	107+25.00	50.00 L
1176	347367.38	818621.12	88+97.90	60.00 L
1177	347267.16	818594.15	88+70.10	35.00 R
1178	347237.00	820447.88	88+70.00	65.00 R
1179	347237.38	818622.19	88+97.90	65.00 R
1189	347290.09	819545.87	98+22.05	25.00 R
1196	347348.27	818123.36	84+00.00	50.00 L
1197	347358.27	818123.28	84+00.00	60.00 L
1198	347358.64	818168.28	84+45.00	60.00 L
1199	347348.64	818168.36	84+45.00	50.00 L

STATE OF ILLINOIS)
) SS
COUNTY OF WILLIAMSON)

I, PAUL W. GAYER, PROFESSIONAL LAND SURVEYOR NO. 2916, DO HEREBY CERTIFY THAT AT THE REQUEST OF JAMES WEBB, COUNTY ENGINEER FOR THE COUNTY OF WILLIAMSON, STATE OF ILLINOIS, I HAVE CAUSED A SURVEY TO BE MADE OF F.A.S. 2904 (LAKE EGYPT ROAD) ACROSS PART OF SECTIONS 26, 27, 28, 29 AND 30, T10S, R3E OF THE 3rd PRINCIPAL MERIDIAN, WILLIAMSON COUNTY, ILLINOIS, AND THAT THIS PLAT CORRECTLY DEPICTS A PART OF THAT SURVEY, INCLUDING CENTERLINE, RIGHT OF WAY WIDTHS, AND STATIONING TO THE BEST OF MY KNOWLEDGE AND BELIEF.

IN WITNESS THEREOF, I HAVE HEREUNTO SET MY HAND AND AFFIXED MY SEAL AT MARION, ILLINOIS, THIS 16TH DAY OF MARCH, 2007.

Paul W. Gayer
PAUL W. GAYER
ILLINOIS PROFESSIONAL LAND SURVEYOR NO. 2916



Exp. 11/30/08

REVISIONS	
DATE	NO.

© 2002 ALL RIGHTS RESERVED
CLARIDA ENGINEERING CO.
P.O. BOX 937
308 South Court Street - Marion, Illinois 62959

RIGHT-OF-WAY PLAT
LAKE OF EGYPT ROAD
WILLIAMSON COUNTY, ILLINOIS

Date: _____ DR. By: T.W. CK'D By: P.W.G.
Scale: 1" = 100' Job No. 00044 Sheet No. 28 of 86