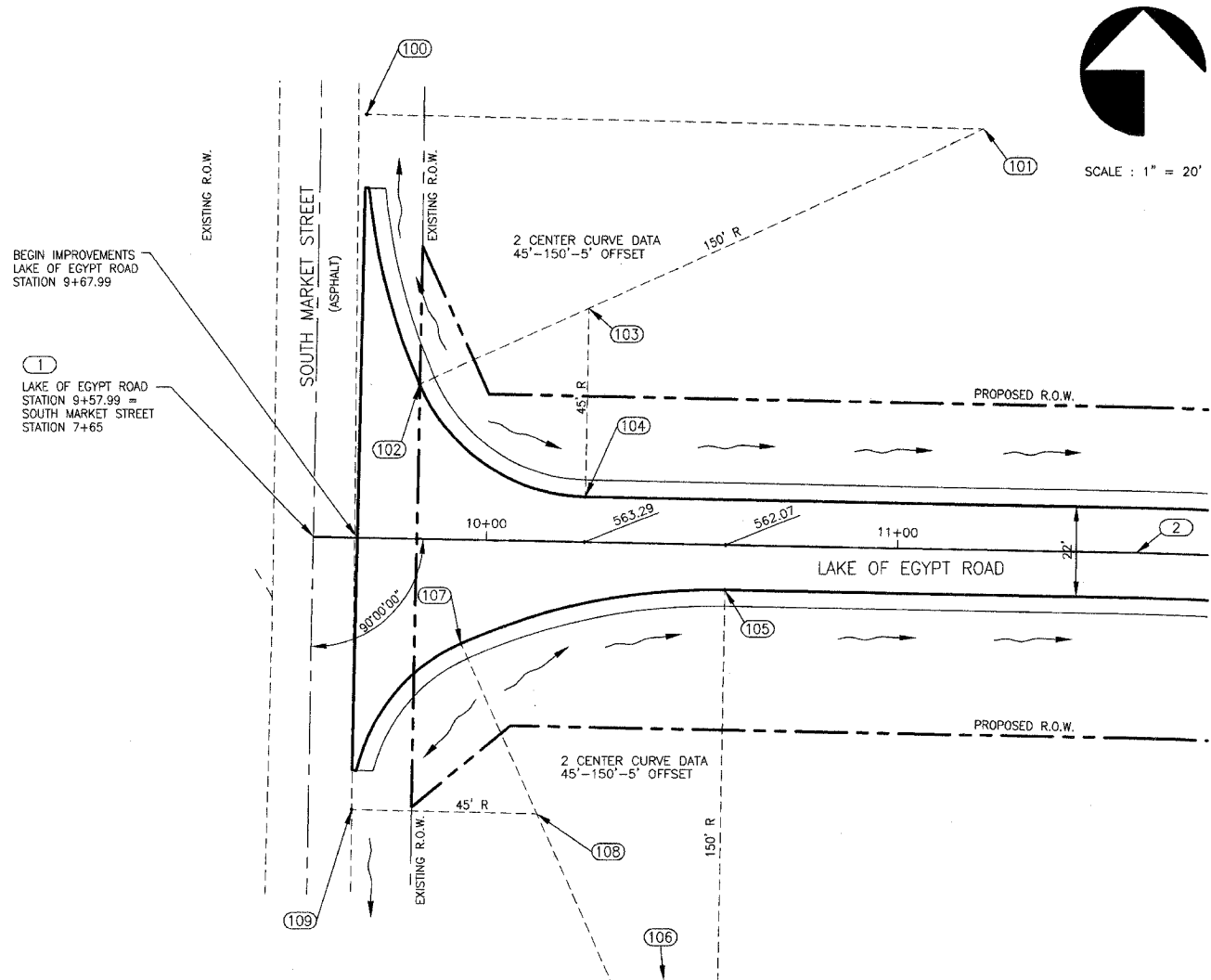


CONTRACT NO. 99199

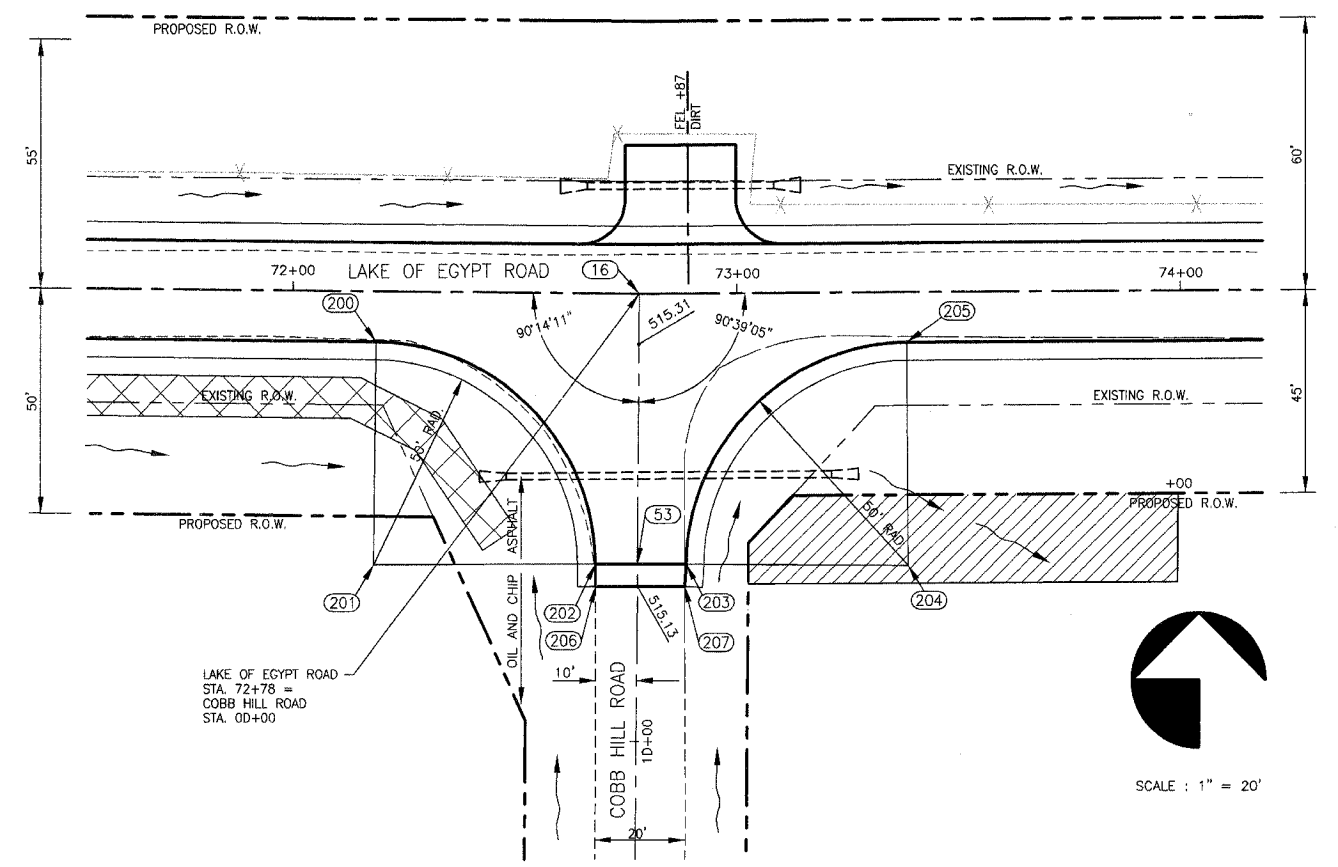


SOUTHEAST QUADRANT		
STATIONING ALONG LAKE OF EGYPT ROAD	OFFSET TO EDGE OF PAVT FEET	EDGE OF PAVT ELEV.
9+68.49	65.85	562.64
9+69.58	55.93	562.91
9+72.88	46.51	563.18
9+76.17	38.05	563.46
9+85.19	30.97	563.73
9+94.27	25.29	564.00
10+02.77	21.60	563.68
10+12.18	18.22	563.35
10+21.80	15.47	563.03
10+31.57	13.38	562.71
10+41.46	11.93	562.38
10+51.43	11.15	562.06
10+58.13	11.00	561.90

NORTHEAST QUADRANT		
STATIONING ALONG LAKE OF EGYPT ROAD	OFFSET TO EDGE OF PAVT FEET	EDGE OF PAVT ELEV.
9+69.01	100.91	565.84
9+69.31	90.92	565.60
9+70.27	80.96	565.37
9+71.90	71.10	565.13
9+74.16	61.36	564.89
9+77.10	51.80	564.66
9+80.65	42.46	564.42
9+84.93	33.43	564.18
9+90.86	25.40	563.95
9+98.42	18.88	563.71
10+07.22	14.19	563.47
10+16.85	11.55	563.24
10+23.86	11.00	563.12

COORDINATE POINTS				
POINT NO.	DESCRIPTION	NORTHING	EASTING	ELEVATION
1	STA. 9+57.99	348944.91	811936.60	565.75
2	STA. 11+57.99	348941.20	812136.56	557.81
100	END RADIUS	349045.60	811949.49	565.84
101	CENTER POINT	349042.30	812099.45	-----
102	END RADIUS	348981.41	811962.37	564.36
103	CENTER POINT	348999.68	812003.49	-----
104	END RADIUS	348954.69	812002.66	563.12
105	END RADIUS	348932.05	812036.55	561.90
106	CENTER POINT	348782.08	812033.76	-----
107	END RADIUS	348918.95	811972.40	564.00
108	CENTER POINT	348877.89	811990.81	-----
109	END RADIUS	348878.88	811945.87	562.04

INTERSECTION DETAIL
LAKE OF EGYPT ROAD & SOUTH MARKET STREET
 (LAKE OF EGYPT ROAD STA. 9+57.99 = SOUTH MARKET STREET STA. 7+65)



SOUTHWEST QUADRANT		
STATIONING ALONG LAKE EGYPT ROAD	OFFSET TO EDGE OF PAVT FEET	EDGE OF PAVT ELEV.
72+18.78	11.00	516.82
72+28.71	12.00	516.58
72+38.25	14.95	516.34
72+47.01	19.73	516.10
72+54.64	26.16	515.86
72+60.85	33.98	515.62
72+65.38	42.88	515.38
72+68.05	52.50	515.14
72+68.77	60.40	514.90

SOUTHEAST QUADRANT		
STATIONING ALONG LAKE EGYPT ROAD	OFFSET TO EDGE OF PAVT FEET	EDGE OF PAVT ELEV.
73+38.31	11.00	513.12
73+28.37	12.00	513.32
73+18.84	14.95	513.52
73+10.08	19.73	513.72
73+02.44	26.16	513.92
72+96.23	33.98	514.13
72+91.71	42.88	514.33
72+89.04	52.50	514.53
72+88.31	60.43	514.73

COORDINATE POINTS				
POINT NO.	DESCRIPTION	NORTHING	EASTING	ELEVATION
16	STA. 72+78.00	347290.68	817001.80	515.56
53	C.L. SIDE ROAD	347230.34	817002.15	515.15
200	END RADIUS	347280.34	816942.46	516.82
201	CENTER POINT	347230.34	816941.92	-----
202	END RADIUS	347230.39	816991.92	515.00
203	END RADIUS	347230.30	817012.39	515.00
204	CENTER POINT	347229.96	817062.39	-----
205	END RADIUS	347279.96	817062.16	513.12
206	END TRANSITION	347225.28	816991.92	514.90
207	END TRANSITION	347225.30	817012.05	514.79

INTERSECTION DETAIL
LAKE OF EGYPT ROAD & COBB HILL ROAD
 (LAKE OF EGYPT ROAD STA. 72+78.00 = COBB HILL ROAD STA. 0+00)
 FOR PROFILE, SEE "ENTRANCE CROSS SECTIONS", STA. 72+78, SHT 74

CENTERLINE COORDINATE POINTS				
PT. NO.	STATION	DESCRIPTION	NORTHING	EASTING
1	9+57.99	BEGINNING	348944.91	811936.60
2	11+57.99	P.C.	348941.20	812136.56
3	CENTER	CENTER	348241.32	812123.57
4	14+71.10	P.T.	348866.72	812438.01
5	16+88.19	P.C.	348769.21	812631.96
6	CENTER	CENTER	348394.61	812946.40
7	20+00.00	P.T.	348694.76	812932.11
8	29+37.45	P.C.	348675.62	813869.36
9	CENTER	CENTER	348200.72	813859.67
10	36+82.34 BK = 37+79.18 AH	P.T.	348192.26	814334.59
11	41+62.97	P.C.	347808.53	814327.75
12	CENTER	CENTER	347800.08	814802.68
13	49+11.71 BK = 50+72.71 AH	P.T.	347325.11	814796.84
14	59+91.27	P.I.	347313.82	815715.33
15	64+98.19	P.I.	347299.25	816222.04
16	72+78.00	P.I.	347290.68	817001.80
17	77+26.57	P.I.	347292.71	817450.37

CENTERLINE COORDINATE POINTS				
PT. NO.	STATION	DESCRIPTION	NORTHING	EASTING
18	88+97.90	P.I.	347302.39	818621.66
19	98+21.98	P.I.	347315.10	819545.66
20	107+12.20	P.I.	347316.21	820435.87
21	116+50.07	P.I.	347327.47	821373.68
22	124+52.88	P.I.	347331.31	822176.47
23	132+24.20	P.C.	347306.36	822947.63
24	CENTER	CENTER	357301.14	823270.73
25	138+96.62 BK = 138+95.56 AH	P.T.	347307.23	823619.69
26	140+78.39	P.C.	347313.61	823802.41
27	CENTER	CENTER	342316.65	823976.89
28	143+63.29	P.T.	347315.44	824087.27
29	153+69.44	P.I.	347293.22	825093.17
30	164+66.37	P.I.	347275.40	826189.95
31	169+83.81	P.C.	347279.06	826707.38
32	CENTER	CENTER	348044.04	826701.97
33	171+87.55	P.T.	347307.45	826908.53
34	176+96.60	P.C.	347444.90	827398.67
35	CENTER	CENTER	346708.32	827605.23

CENTERLINE COORDINATE POINTS				
PT. NO.	STATION	DESCRIPTION	NORTHING	EASTING
36	179+40.07 BK = 180+76.59 AH	P.T.	347472.97	827628.18
37	186+27.03	P.I.	347455.92	828178.53
38	193+19.49	P.C.	347439.88	828870.80
39	CENTER	CENTER	343940.82	828789.75
40	199+46.82	P.T.	347369.38	828493.32
41	202+29.18	P.C.	347312.48	829770.60
42	CENTER	CENTER	350741.17	830473.48
43	209+06.29	P.T.	347241.31	830442.20
44	215+07.82	P.I.	347235.93	831043.70
45	221+08.42	P.I.	347221.27	831644.12
46	233+95.79	P.I.	347224.29	832931.49
47	239+73.52	P.I.	347219.65	833509.20
48	247+82.77	P.I.	347229.34	834318.39
49	254+66.24	P.C.	347227.25	835001.86
50	254+66.24	CENTER	347477.25	835002.63
51	257+28.04	P.T.	347351.59	835218.75
52	258+17.23	END	347428.69	835263.58

STATE OF ILLINOIS PROFESSIONAL DESIGN FIRM LICENSE NO. 184-000872

© 2007 ALL RIGHTS RESERVED

CLARIDA & ZIEGLER
ENGINEERING CO.
 308 South Court St, P.O. Box 937
 Marion, Illinois 62959
 Phone - (618)993-6411, Fax - (618)993-6750

INTERSECTION DETAILS
 LAKE OF EGYPT ROAD
 WILLIAMSON COUNTY, ILLINOIS

Date 5/20/2002 DR. By T.W./S.W. CK'D By H.G.C.
 Scale 1" = 20' Job No. 00044 Sheet No. 34 of 86