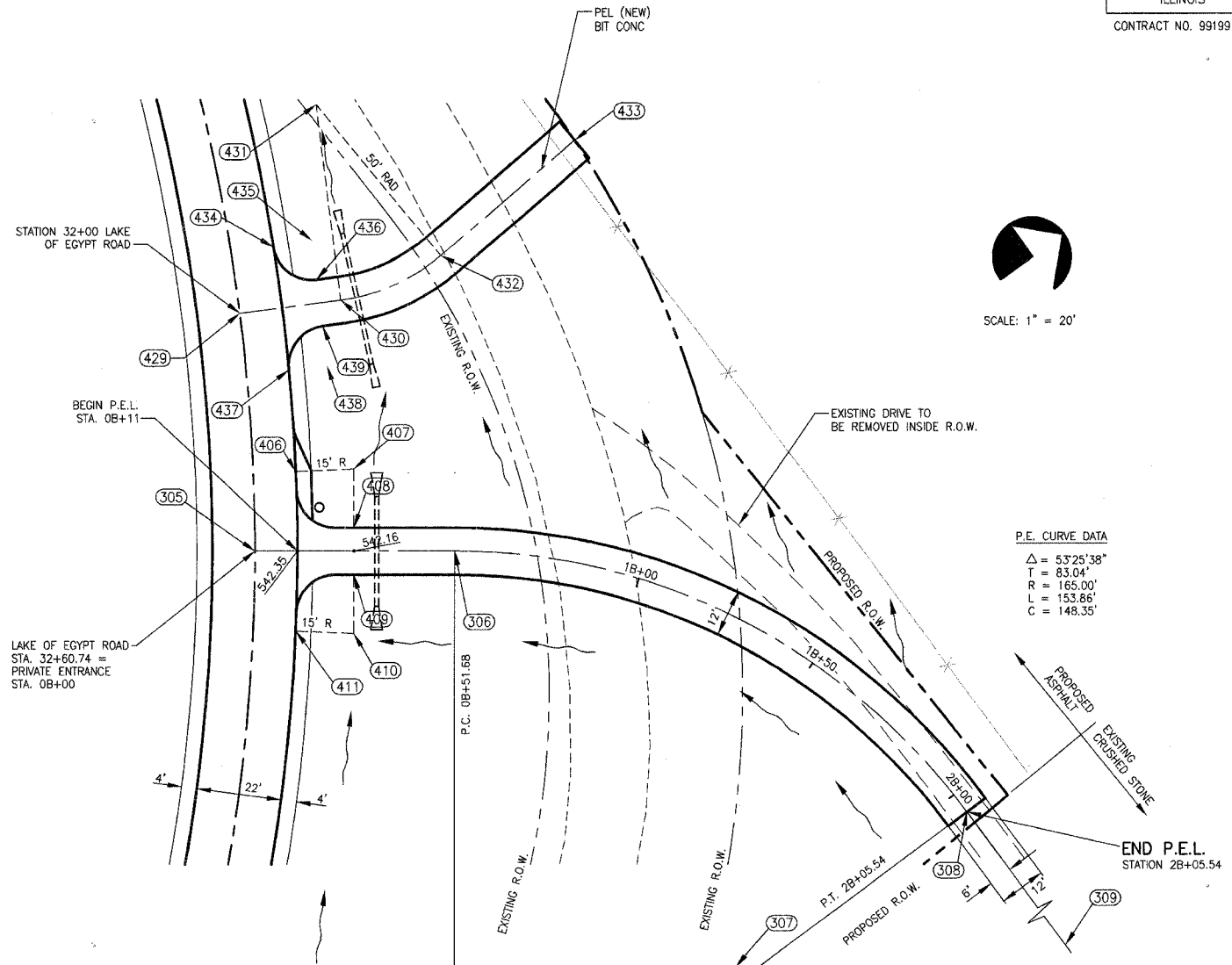


P.E. CURVE DATA
 $\Delta = 70^\circ 35' 59''$
 $T = 38.94'$
 $R = 55.00'$
 $L = 67.77'$
 $C = 63.56'$

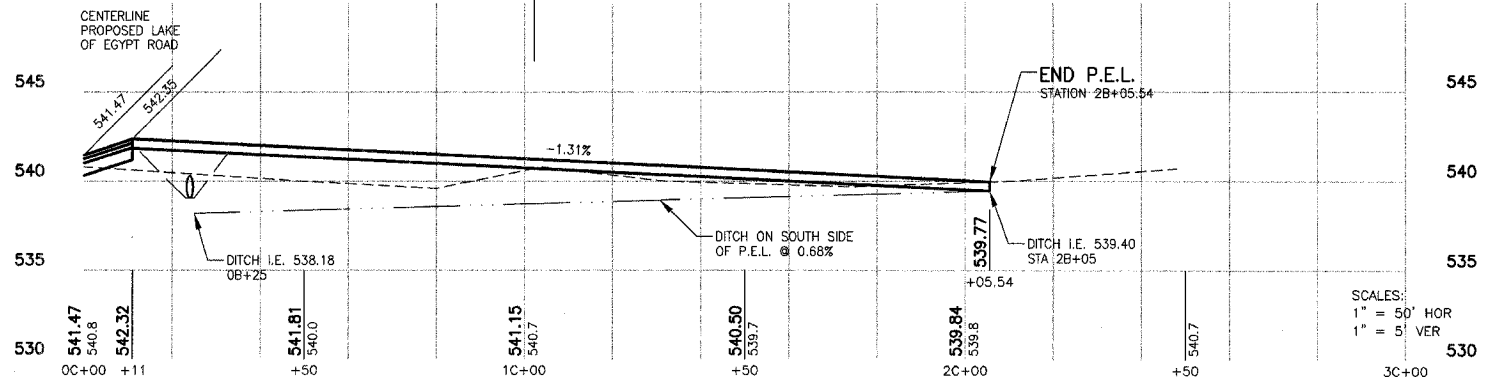
INTERSECTION DETAILS LAKE OF EGYPT ROAD AND OLD LAKE OF EGYPT ROAD

(LAKE OF EGYPT STA. 17+64.36 = EXISTING LAKE OF EGYPT ROAD STA. 0A+00)
 FOR PROFILE, SEE "ENTRANCE CROSS SECTIONS", STA 17+64, SHT 73

COORDINATE POINTS				
POINT NO.	DESCRIPTION	NORTHING	EASTING	ELEVATION
300	STA. 17+64.36	348738.76	812701.74	-----
301	P.C.	348736.81	812701.01	-----
302	CENTER POINT	348756.04	812649.48	-----
303	P.T.	348701.05	812648.47	-----
304	P.O.L.	348702.78	812554.22	-----
400	END RADIUS	348740.95	812666.67	544.40
401	CENTER POINT	348727.16	812660.76	-----
402	END RADIUS	348713.19	812666.23	544.49
403	END RADIUS	348721.74	812716.69	543.78
404	CENTER POINT	348707.55	812711.85	-----
405	END RADIUS	348716.76	812700.01	544.19
406	END RADIUS	348584.92	814157.30	541.82



P.E. CURVE DATA
 $\Delta = 53^\circ 25' 38''$
 $T = 83.04'$
 $R = 165.00'$
 $L = 153.86'$
 $C = 148.35'$



INTERSECTION DETAILS LAKE OF EGYPT ROAD AND PRIVATE ENTRANCE LEFT

(LAKE OF EGYPT STA. 32+60.74 = PRIVATE ENTRANCE LEFT STA. 0B+00)

COORDINATE POINTS				
POINT NO.	DESCRIPTION	NORTHING	EASTING	ELEVATION
305	STA. 32+60.74	348563.70	814166.05	-----
306	P.C.	348603.19	814199.38	541.84
307	CENTER POINT	348496.77	814325.47	-----
308	P.T.	348661.44	814335.81	539.92
309	P.O.L.	348658.76	814378.53	-----
406	END RADIUS	348584.92	814157.30	541.98
407	CENTER POINT	348596.78	814166.48	-----
408	END RADIUS	348597.10	814177.95	541.85
409	END RADIUS	348579.36	814187.12	541.85
410	CENTER POINT	348569.69	814198.58	-----
411	END RADIUS	348558.64	814188.43	542.58

COORDINATE POINTS			
POINT NO.	DESCRIPTION	NORTHING	EASTING
429	STA. 32+00	348599.81	814117.25
430	P.C.	348621.90	814131.50
431	CENTER POINT	348649.01	814089.49
432	P.T.	348649.01	814139.49
433	P.O.L.	348694.28	814139.49
434	END RADIUS	348617.34	814109.90
435	CENTER POINT	348625.92	814115.05
436	END RADIUS	348620.49	814123.45
437	END RADIUS	348600.34	814136.25
438	CENTER POINT	348608.56	814141.94
439	END RADIUS	348613.99	814133.54

STATE OF ILLINOIS PROFESSIONAL DESIGN FIRM LICENSE NO. 184-000872
 © 2007 ALL RIGHTS RESERVED

**CLARIDA & ZIEGLER
 ENGINEERING CO.**
 308 South Court St., P.O. Box 937
 Marion, Illinois 62959
 Phone - (618)993-6411, Fax - (618)993-6750

PRIVATE DRIVE DETAILS
 LAKE OF EGYPT ROAD
 WILLIAMSON COUNTY, ILLINOIS

Date: 02/15/02 DR. By: T.W. CK'D By: H.G.C.
 Scale: 1" = 20' Job No. 00044 Sheet No. 40 of 86