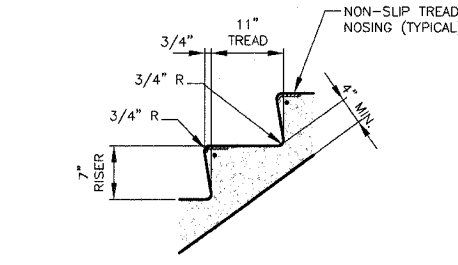
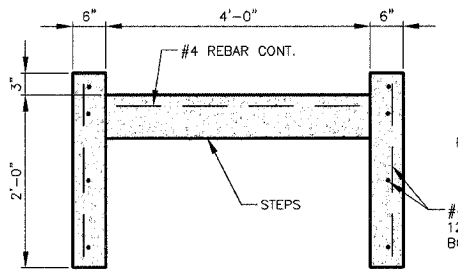


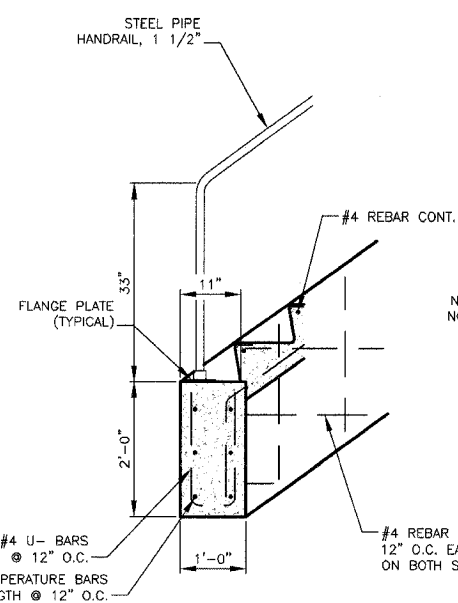
ROUTE NO.	SECTION	COUNTY	TOTAL SHEETS	SHEET NO.
F.A.S. 2904	97-00089-00-RS	WILLIAMSON	86	47
ILLINOIS		LAKE EGYPT ROAD		



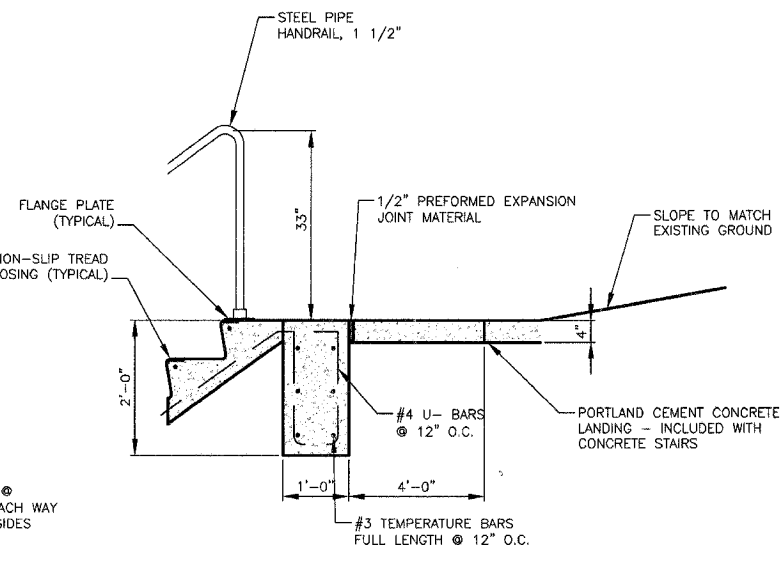
SECTION THROUGH STEP
SCALE: 3/4"=1'-0"



SECTION A-A
SCALE: 3/4"=1'-0"



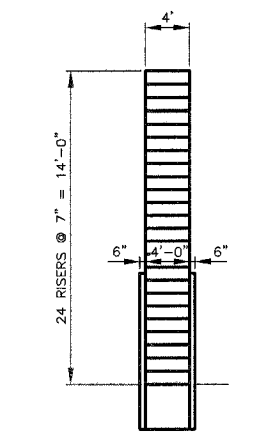
DETAIL A
SCALE: 3/4"=1'-0"



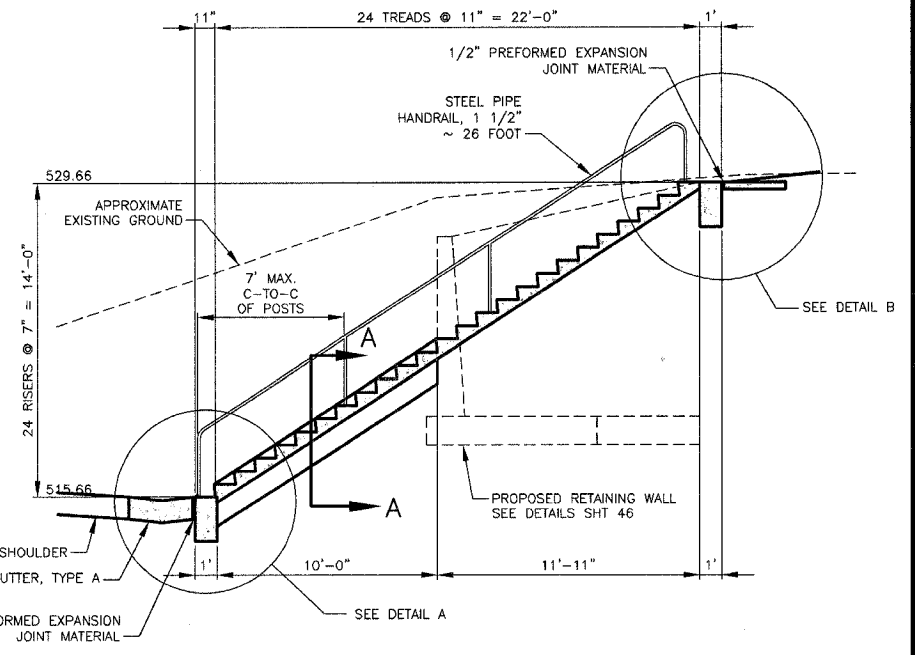
DETAIL B
SCALE: 3/4"=1'-0"

PCC STAIR DETAILS

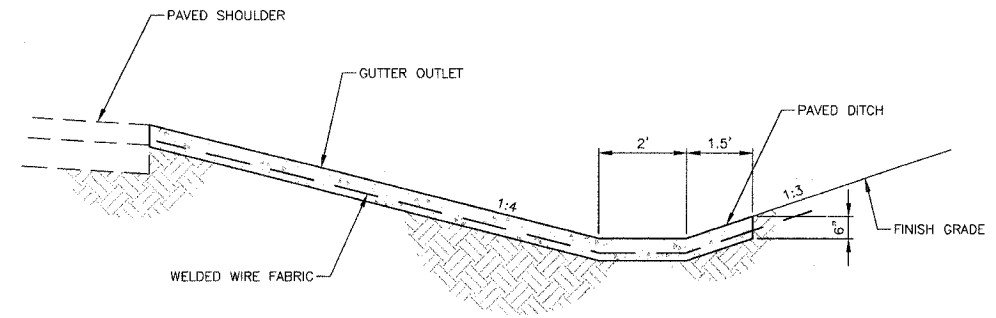
LEFT OF STATION 221+43



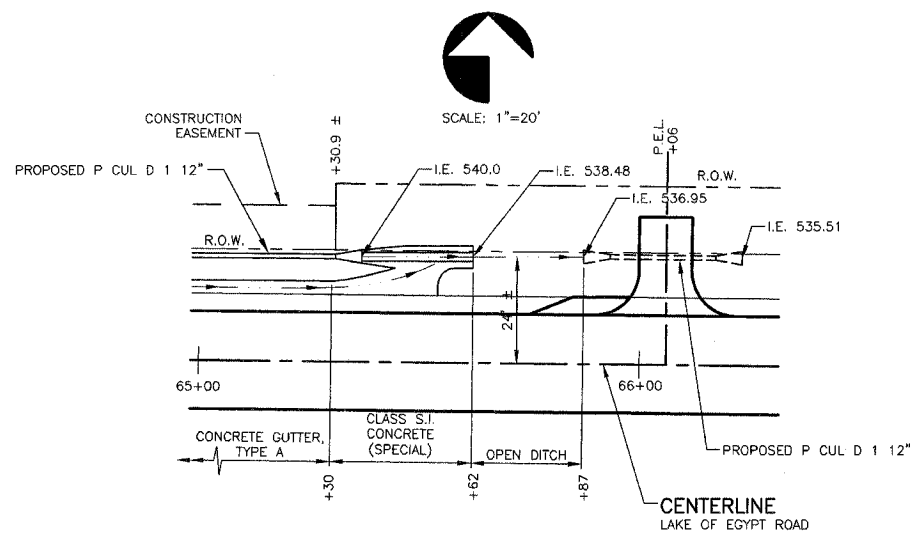
ELEVATION OF PCC STAIRS
SCALE: 1/4"=1'-0"



PROFILE OF PCC STAIRS
SCALE: 1/4"=1'-0"

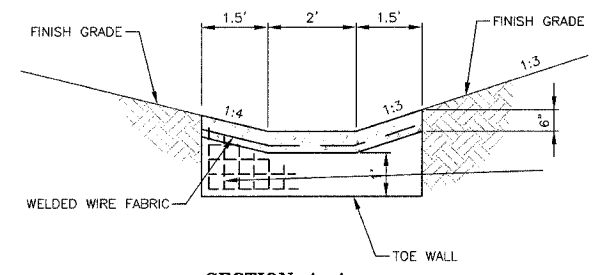


SECTION B-B
SCALE: 1"=2'

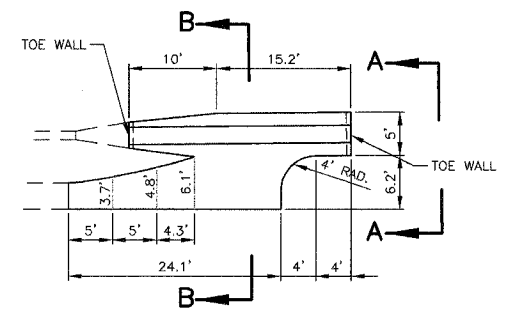


PLAN
SCALE: 1"=20'

NOTE: PAVED DITCH AND GUTTER OUTLET SHOWN HERE TO BE PAID FOR AS 4.8 CU YD OF CLASS S1 CONCRETE (OUTLET) SPECIAL, WHICH SHALL INCLUDE TOE WALLS, REINFORCEMENT, FORMING CONCRETE, AND ALL LABOR AND EQUIPMENT TO CONSTRUCT AS SHOWN.

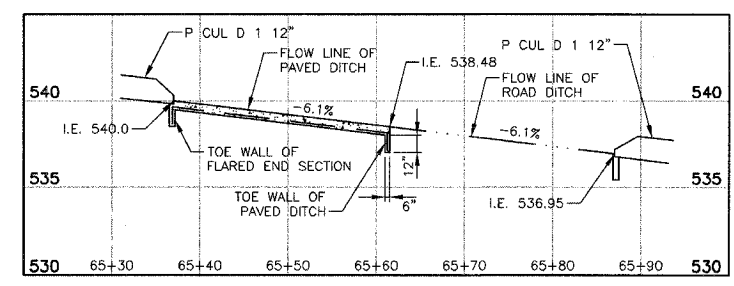


SECTION A-A
SCALE: 1"=2'



PLAN OF PAVED DITCH AND GUTTER OUTLET
SCALE: 1"=10'

PAVED DITCH DETAILS



PROFILE OF PAVED DITCH
SCALE: 1"=10'

STATE OF ILLINOIS PROFESSIONAL DESIGN FIRM LICENSE NO. 184-000872	
© 2007 ALL RIGHTS RESERVED	
CLARIDA ENGINEERING CO.	
308 South Court St, P.O. Box 937 Marion, Illinois 62959 Phone - (618)993-6411, Fax - (618)993-6750	
MISCELLANEOUS DETAILS LAKE OF EGYPT ROAD WILLIAMSON COUNTY, ILLINOIS	
Date 02/23/07	DR. By TW
Scale AS SHOWN	Job No. 00044 Sheet No. 47 of 86