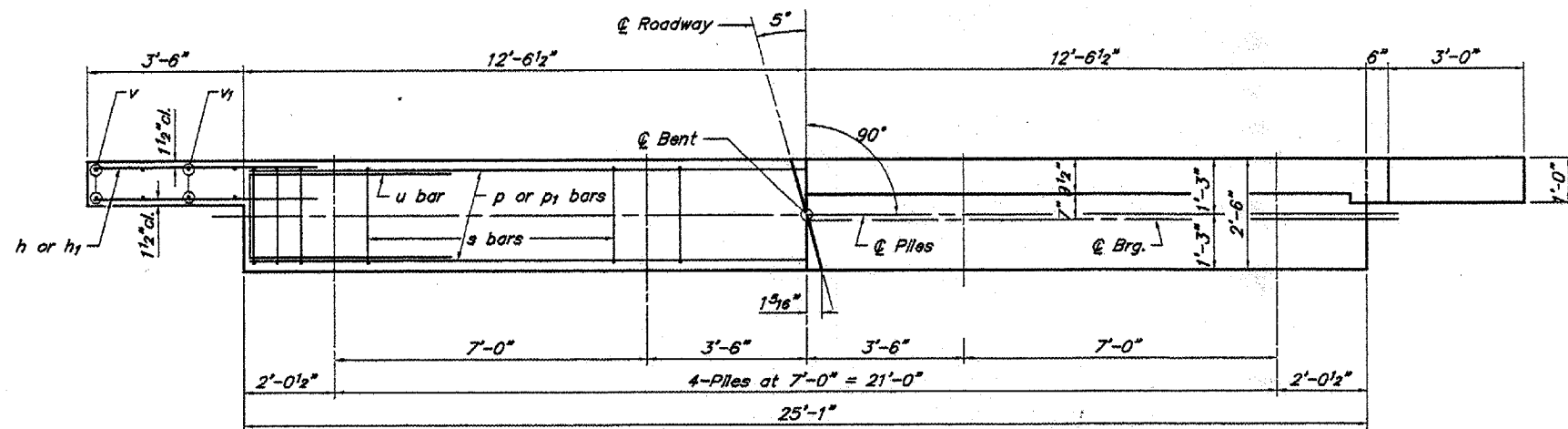
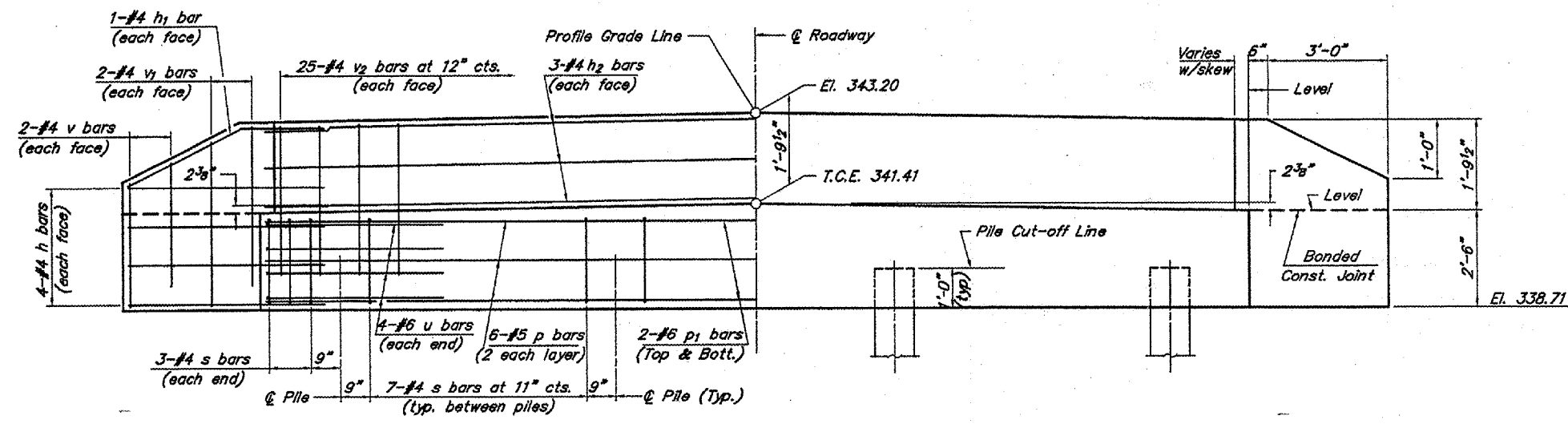


ROUTE	SECTION	COUNTY	TOTAL SHEETS	SHEET NO.
TR 137	99-01146-00-BR	POPE	11	6
PROJECT NO. BROS-151(61)		CONTRACT NO. 99210		



PLAN



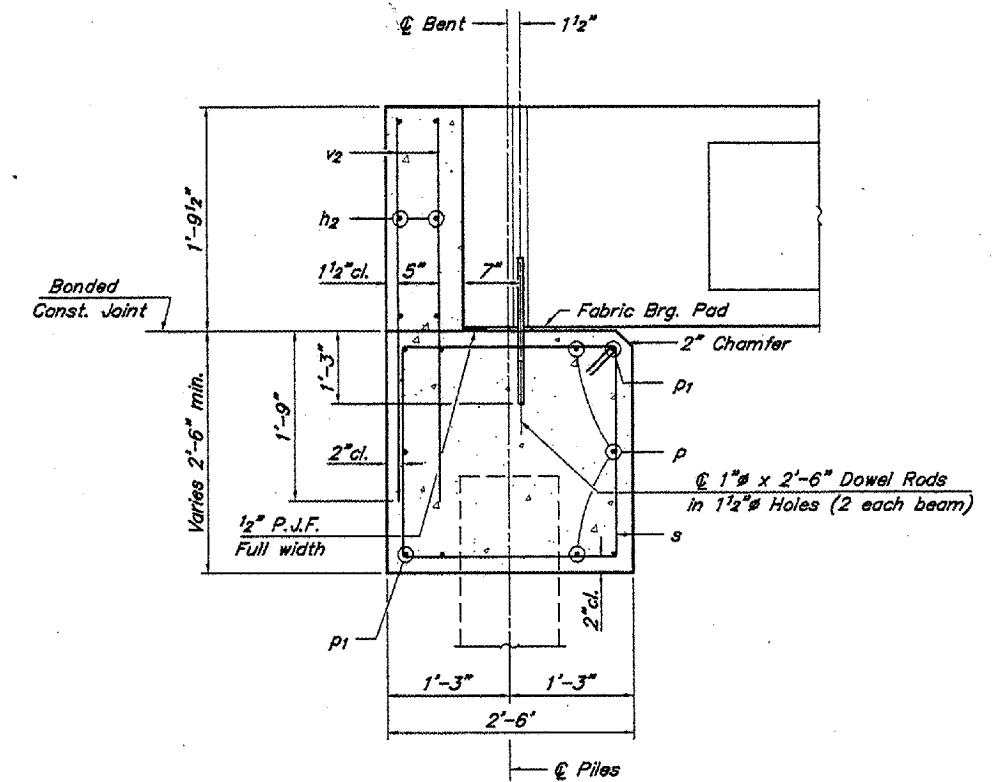
ELEVATION

NOTES

- The Backwall and the portion of the Wingwalls above the bonded construction joint shall be cast against the in-place beam.
- Reinforcement bars shall conform to A.A.S.H.T.O. M-31, M-42 or M-53, Grade 60.

DESIGN STRESSES

$f_c' = 3,500 \text{ psi}$
 $f_y = 60,000 \text{ psi}$



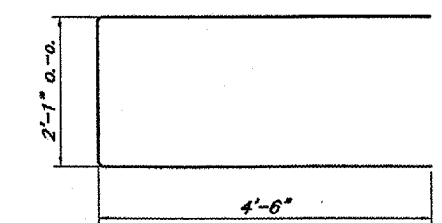
SECTION THRU ABUT.
(At Right Angles)

BAR LIST FOR ONE ABUTMENT

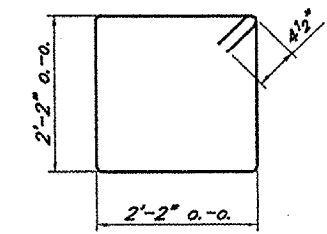
Bar	No.	Size	Length	Shape
h	16	#4	5'-0"	—
h1	4	#4	5'-3"	—
h2	6	#4	24'-9"	—
p	6	#5	24'-9"	—
p1	4	#6	24'-9"	—
s	27	#4	9'-5"	□
u	8	#6	11'-1"	—
v	8	#4	2'-8"	—
v1	8	#4	3'-8"	—
v2	50	#4	3'-11"	—

QUANTITIES FOR ONE ABUTMENT

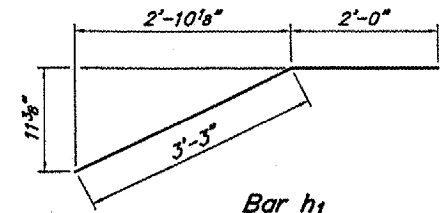
Concrete Structures	8.4 Cu. Yds.
Reinforcement Bars	920 Lbs.



Bar u



Bar s



Bar h1

ABUTMENTS
 BAY CREEK
 SECTION 99-01146-00-BR
 POPE COUNTY