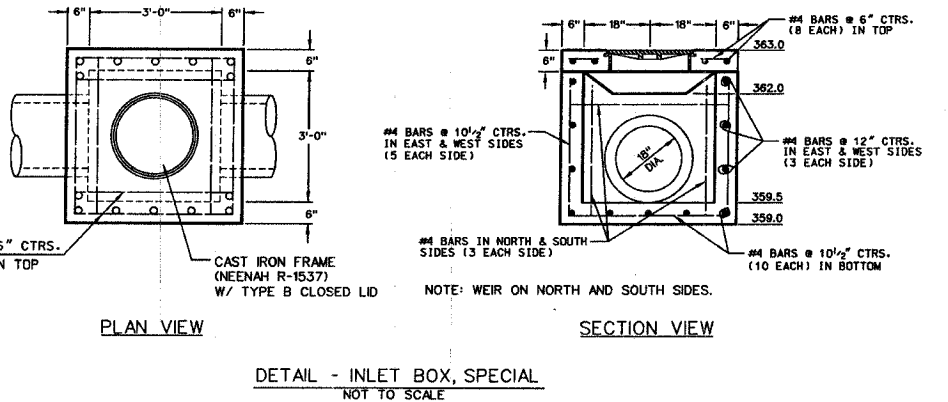
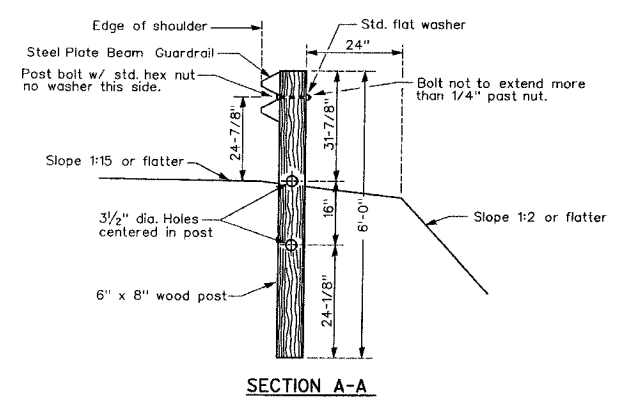
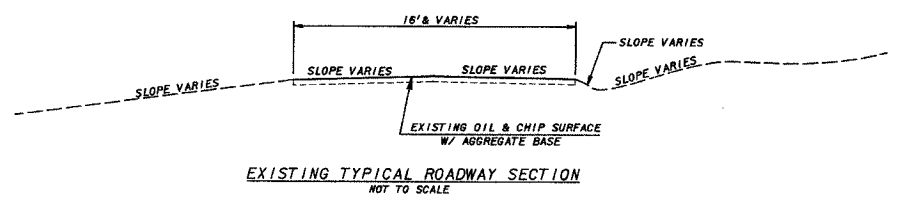
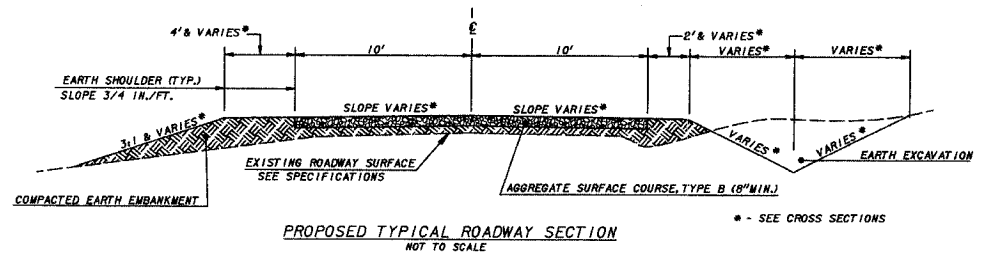
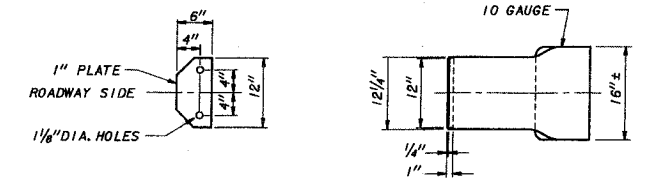


| | | | | |
|----------------------|----------------|-----------------------------|--------------|--------------|
| ROUTE | SECTION | COUNTY | TOTAL SHEETS | SHEET NUMBER |
| TR-131 | 03-01175-00-BR | | 22 | 2A |
| JOB. NO. C-99-542-04 | | PROJECT NO. BROS-0181 (039) | | |
| MORGAN SCHOOL ROAD | | CONTRACT NO. 99214 | | |



NOTE: COST OF FURNISHING AND INSTALLING CURLED END SECTIONS TO BE INCLUDED IN UNIT BID PRICE FOR STEEL PLATE BEAM GUARDRAIL, TYPE A - (5) REQUIRED.

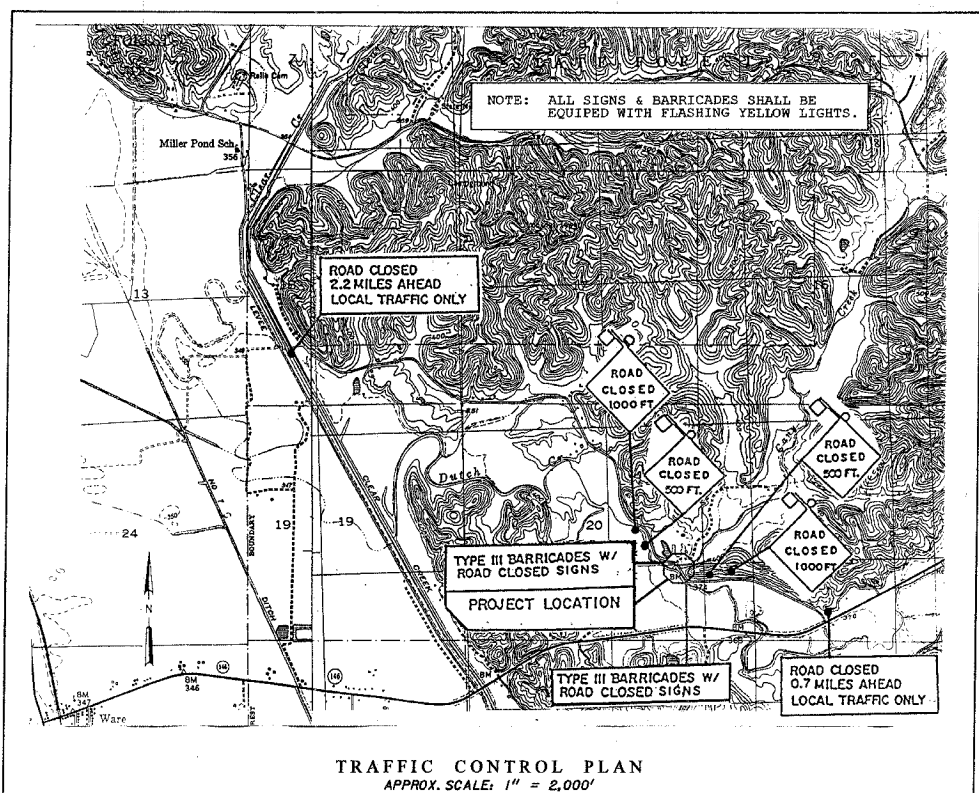


- NOTES:
- Construct according to Standard 631011 for Traffic Barrier Terminal Type 2, except delete end section and splice into radius guardrail.
 - Steel Plate Beam Guardrail Type A, Type B, or Traffic Barrier Terminal as specified.
 - For the 8'-6" radius, the rail is not bolted to the post located at the midpoint of the curve.

| INSTALLATION CHARACTERISTICS PER DESIGN RADIUS (R) | | | |
|--|-------------------|-----|-----|
| R | NO. OF WOOD POSTS | X | Y |
| 17'-0" | 6 | 30' | 15' |

GENERAL NOTES:
All slope ratios are expressed as units of vertical displacement to units of horizontal displacement (V:H)
All dimensions are in inches unless otherwise shown.

DETAIL - STEEL PLATE BEAM GUARDRAIL, SHORT RADIUS



SUMMARY OF QUANTITIES

| CODE NO. | ITEM | UNIT | X080-2A AWARDED QUANTITY | AS-BUILT QUANTITY |
|------------|---|-------|--------------------------|-------------------|
| 20100500 | TREE REMOVAL, ACRES | ACRE | 0.2 | |
| 20200410 | EARTH EXCAVATION (SPECIAL) | CU YD | 450 | |
| 20300100 | CHANNEL EXCAVATION | CU YD | 3,800 | |
| 20400800 | FURNISHED EXCAVATION | CU YD | 1,000 | |
| 20800150 | TRENCH BACKFILL | CU YD | 80 | |
| 25001000 | SEEDING, CLASS 2 (SPECIAL) | ACRE | 0.65 | |
| 28000250 | TEMPORARY EROSION CONTROL SEEDING | POUND | 300 | |
| 28000300 | TEMPORARY DITCH CHECKS | EACH | 5 | |
| 28000400 | PERIMETER EROSION BARRIER | FOOT | 700 | |
| 28000500 | INLET AND PIPE PROTECTION | EACH | 4 | |
| 28100805 | STONE DUMPED RIPRAP, CLASS A3 | TON | 260 | |
| 28100807 | STONE DUMPED RIPRAP, CLASS A4 | TON | 1,600 | |
| 40200800 | AGGREGATE SURFACE COURSE, TYPE B | TON | 750 | |
| 50100100 | REMOVAL OF EXISTING STRUCTURES | EACH | 1 | |
| 50104900 | REMOVAL OF EXISTING SUB-STRUCTURES | EACH | 1 | |
| 50105200 | REMOVAL OF EXISTING CULVERTS | EACH | 3 | |
| 50300225 | CONCRETE STRUCTURES | CU YD | 39.2 | |
| 50300280 | CONCRETE ENCASEMENT | CU YD | 24.1 | |
| 50400305 | PRECAST PRESTRESSED CONCRETE DECK BEAMS (17" DEPTH) | SQ FT | 2,970 | |
| 50800105 | REINFORCEMENT BARS | POUND | 4,700 | |
| 50900205 | STEEL RAILING, TYPE S1 | FOOT | 220 | |
| 51201600 | FURNISHING STEEL PILES HP12X53 | FOOT | 1,060 | |
| 51202305 | DRIVING PILES | FOOT | 1,060 | |
| 51203600 | TEST PILE STEEL HP12X53 | EACH | 2 | |
| 51204650 | PILE SHOES | EACH | 20 | |
| 51500100 | NAME PLATES | EACH | 1 | |
| 54200223 | PIPE CULVERTS, CLASS C, TYPE 1 18" | FOOT | 148 | |
| 54200433 | PIPE CULVERTS, TYPE 1 RCCP 18" | FOOT | 44 | |
| 54200439 | PIPE CULVERTS, TYPE 1 RCCP 24" | FOOT | 79 | |
| 54213663 | PRECAST REINFORCED CONCRETE FLARED END SECTIONS 18" | EACH | 1 | |
| 54213669 | PRECAST REINFORCED CONCRETE FLARED END SECTIONS 24" | EACH | 4 | |
| 54215553 | METAL END SECTIONS 18" | EACH | 1 | |
| 60246540 | INLET BOX, SPECIAL | EACH | 1 | |
| * 63000000 | STEEL PLATE BEAM GUARDRAIL, TYPE A | FOOT | 295 | |
| * 63100075 | TRAFFIC BARRIER TERMINAL, TYPE 5A | EACH | 2 | |
| * 63100167 | TRAFFIC BARRIER TERMINAL, TYPE 1, SPECIAL (TANGENT) | EACH | 1 | |
| * 63300725 | STEEL PLATE BEAM GUARDRAIL (SHORT RADIUS) | FOOT | 60 | |
| 67100100 | MOBILIZATION | L SUM | 1 | |
| 70101700 | TRAFFIC CONTROL AND PROTECTION | L SUM | 1 | |
| 72000100 | SIGN PANEL - TYPE 1 | SQ FT | 17 | |
| 72900210 | METAL POST - TYPE B | EACH | 2 | |
| * 78201000 | TERMINAL MARKER - DIRECT APPLIED | EACH | 8 | |
| * LR631020 | TRAFFIC BARRIER TERMINAL, TYPE 1 | EACH | 2 | |
| X5020501 | UNDERWATER STRUCTURE EXCAVATION PROTECTION - LOCATION 1 | EACH | 1 | |
| X5020502 | UNDERWATER STRUCTURE EXCAVATION PROTECTION - LOCATION 2 | EACH | 1 | |

* SPECIALTY ITEMS