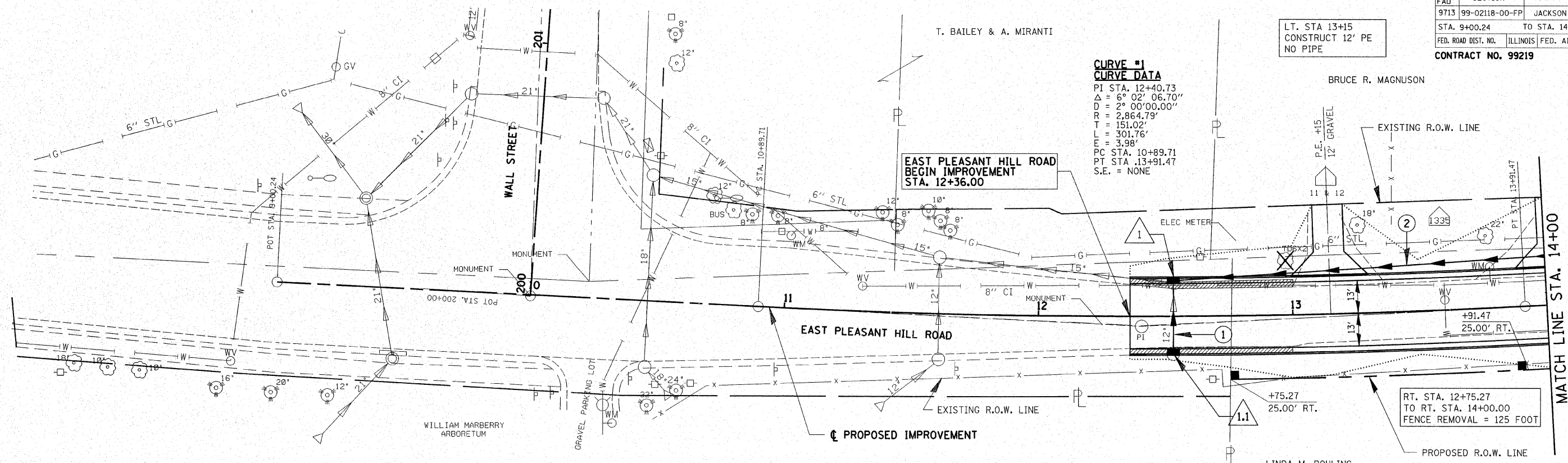


FAU	SECTION	COUNTY	TOTAL SHEETS	SHEET NO.
9713	99-02118-00-FP	JACKSON	122	16
STA. 9+00.24		TO STA. 14+00		
FED. ROAD DIST. NO.		ILLINOIS	FED. AID PROJECT	
CONTRACT NO. 99219				

DATE	BY
12-28-07	...
DATE	BY
12-28-07	...
DATE	BY
12-28-07	...

DATE	BY
12-28-07	...
DATE	BY
12-28-07	...
DATE	BY
12-28-07	...

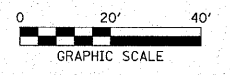


**CURVE #1**  
**CURVE DATA**  
 PI STA. 12+40.73  
 $\Delta = 6^\circ 02' 06.70''$   
 $D = 2^\circ 00' 00.00''$   
 $R = 2,864.79'$   
 $T = 151.02'$   
 $L = 301.76'$   
 $E = 3.98'$   
 PC STA. 10+89.71  
 PT STA. 13+91.47  
 S.E. = NONE

**LEGEND**

- COMBINATION CURB & GUTTER REMOVAL
- EXISTING STORM SEWER LINE
- PROPOSED STORM SEWER LINE
- PROPOSED R.O.W. LINE

RICHARD GRANT  
 CARBONDALE PARK DISTRICT



NOTE:  
 FOR ADDITIONAL STORM SEWER PROFILES  
 SEE STORM SEWER PROFILE SHEET 33

