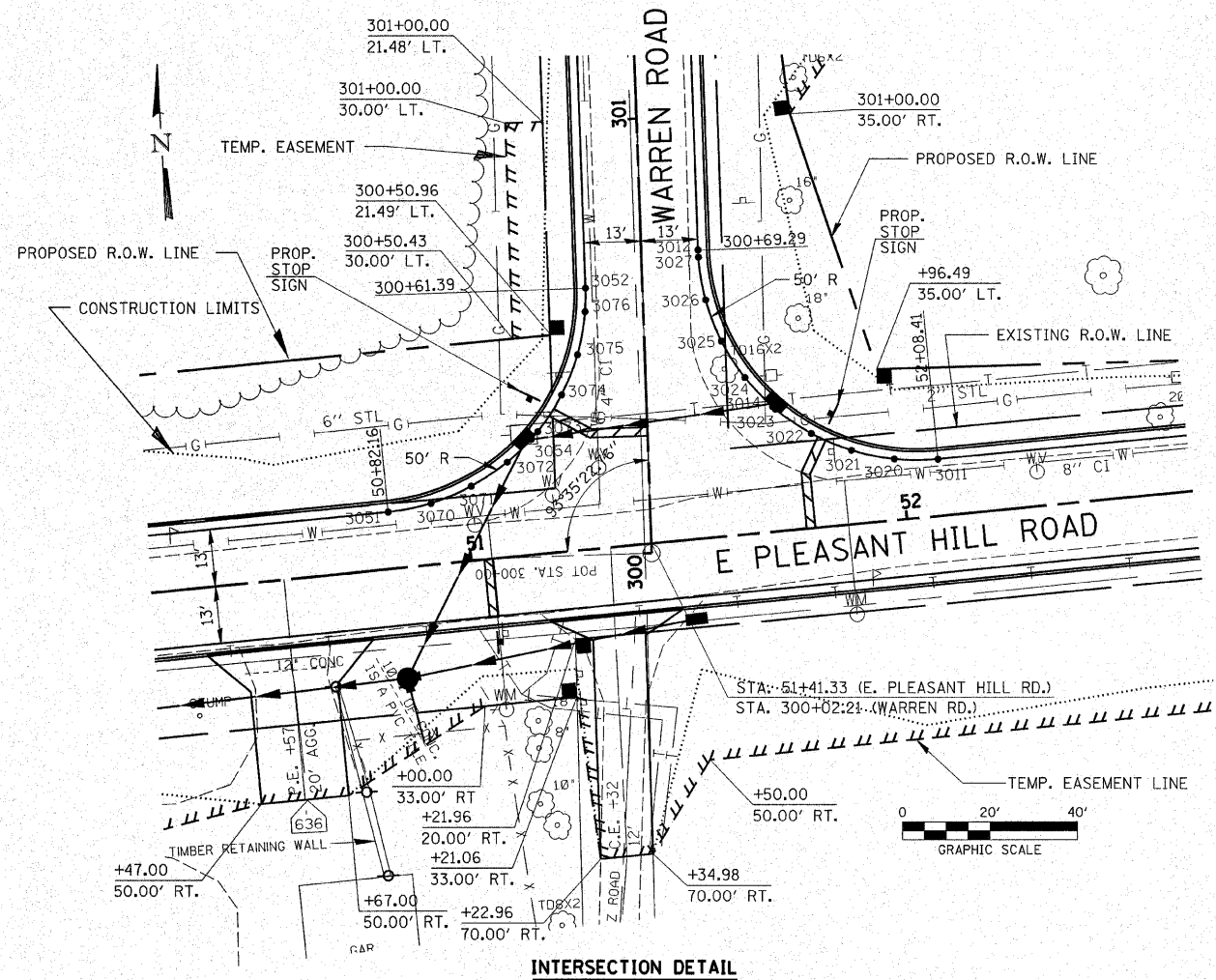



ROUTE	SECTION	COUNTY	TOTAL SHEETS	SHEET NO.
FAU 9713	99-02118-00-FP	JACKSON	122	36
FED. ROAD DIST. NO.		ILLINOIS	FED. AID PROJECT-	
CONTRACT NO. 99219				



INTERSECTION DETAIL

NW QUAD E PLEASANT HILL ROAD & WARREN ROAD					
POINT No.	ELEV.	E PLEASANT HILL		WARREN	
		STA M.L.	OFF. M.L.	STA S.R.	OFF. S.R.
3051	433.87	50+82.16	13.00 LT	300+11.48	59.87 LT
3070	434.22	50+92.09	14.00 LT	300+13.10	50.02 LT
3071	434.58	51+01.63	16.95 LT	300+16.64	40.68 LT
3072	434.93	51+10.39	21.73 LT	300+21.97	32.24 LT
3054	435.20	51+16.39	26.56 LT	300+27.16	26.56 LT
3073	435.30	51+18.03	28.17 LT	300+28.86	25.02 LT
3074	435.60	51+24.23	35.99 LT	300+37.06	19.32 LT
3075	435.90	51+28.76	44.88 LT	300+46.22	15.36 LT
3076	436.30	51+31.43	54.50 LT	300+55.99	13.29 LT
3052	436.62	51+32.06	59.87 LT	300+61.39	13.00 LT

NE QUAD E PLEASANT HILL ROAD & WARREN ROAD					
POINT No.	ELEV.	E PLEASANT HILL		WARREN	
		STA M.L.	OFF. M.L.	STA S.R.	OFF. S.R.
3011	436.87	52+08.41	13.00 LT	300+19.39	66.13 RT
3020	436.67	51+98.47	14.00 LT	300+19.76	56.15 RT
3021	436.45	51+88.94	16.95 LT	300+22.11	46.45 RT
3022	436.23	51+80.17	21.73 LT	300+26.34	37.41 RT
3023	436.02	51+72.54	28.17 LT	300+32.28	29.38 RT
3014	436.00	51+71.96	28.77 LT	300+32.84	28.77 RT
3024	436.05	51+66.33	35.99 LT	300+39.69	22.70 RT
3025	436.15	51+61.80	44.88 LT	300+48.29	17.63 RT
3026	436.45	51+59.13	54.50 LT	300+57.72	14.36 RT
3027	436.92	51+58.43	64.46 LT	300+67.62	13.03 RT
3012	437.00	51+58.50	66.13 LT	300+69.29	13.00 RT


 Rice, Berry and Associates
 A Division of Hampton, Lenzini and Renwick, Inc.
 Civil & Structural Engineers
 801 S. Durkin Drive
 Springfield, Illinois 62704
 217-546-3400
 Account Number 03-47-0001-1
 Date: 01-18-07
 DESIGNED: L.F.S. | CHECKED: S.W.M. | DRAWN: W.J.S.

INTERSECTION DETAILS
 SECTION 99-02118-00-FP
 F.A.U. 9713 / EAST PLEASANT HILL ROAD
 JACKSON COUNTY