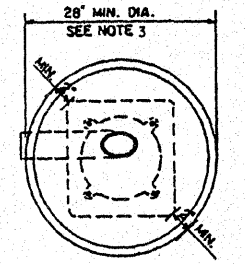
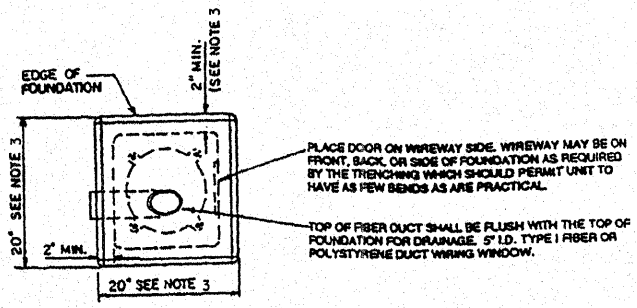


TYP BREAKAWAY COUPLING

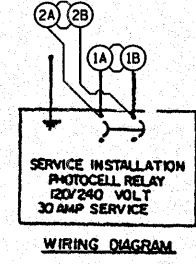
**LOW MOUNT DESIGN TABLE**

MOUNTING HEIGHT	FOUNDATION DEPTH	BOLT CIRCLE
30' OR LESS	5'-0"	11 1/2"
31' - 35'	6'-0"	11 1/2"
36' - 40'	7'-0"	15"
41' - 45'	7'-6"	15"
46' - 50'	8'-0"	15"

TABLE E



ALTERNATE FOUNDATION



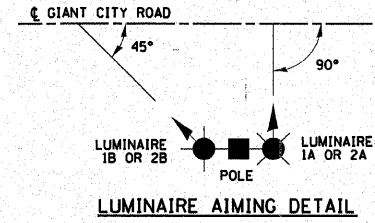
WIRING DIAGRAM

**SCHEDULE FOR STEEL LIGHT POLES**

STATION	LIGHT NO	ACTUAL POLE LENGTH	SETBACK FROM E.P.
E. PLEASANT HILL RD STA. 84+00	58' RT.	1A & 1B	45'
GIANT CITY RD STA. 94+00	38' LT.	2A & 2B	45'

**LEGEND**

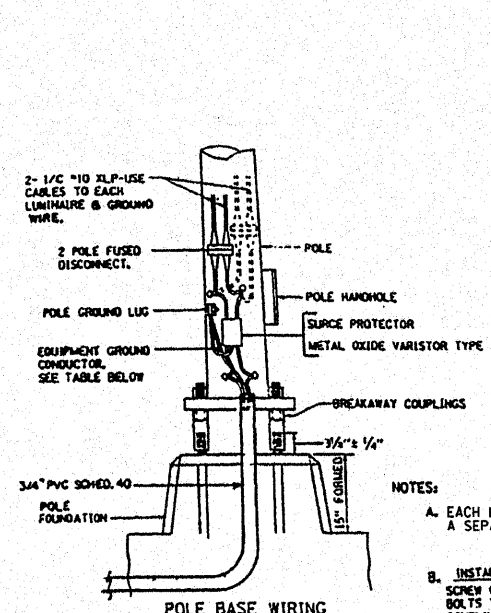
- 1. PROPOSED STEEL LIGHT POLE, 45' MH. TENON MOUNT, TWIN WITH 250 WATT SODIUM VAPOR LUMINAIRES, MULTI-MOUNT.
- 2. PROPOSED SERVICE INSTALLATION PHOTOCELL RELAY.
- 3. PROPOSED UNDERGROUND ELECTRICAL, AS NOTED.
- 4. STEEL LIGHT POLE POSITION INDICATED BY THE NUMBER, THE LETTER INDICATES THE POSITION OF THE LUMINAIRE IN THE WIRE DIAGRAM.



LUMINAIRE AIMING DETAIL

**SERVICE DETAIL NOTES**

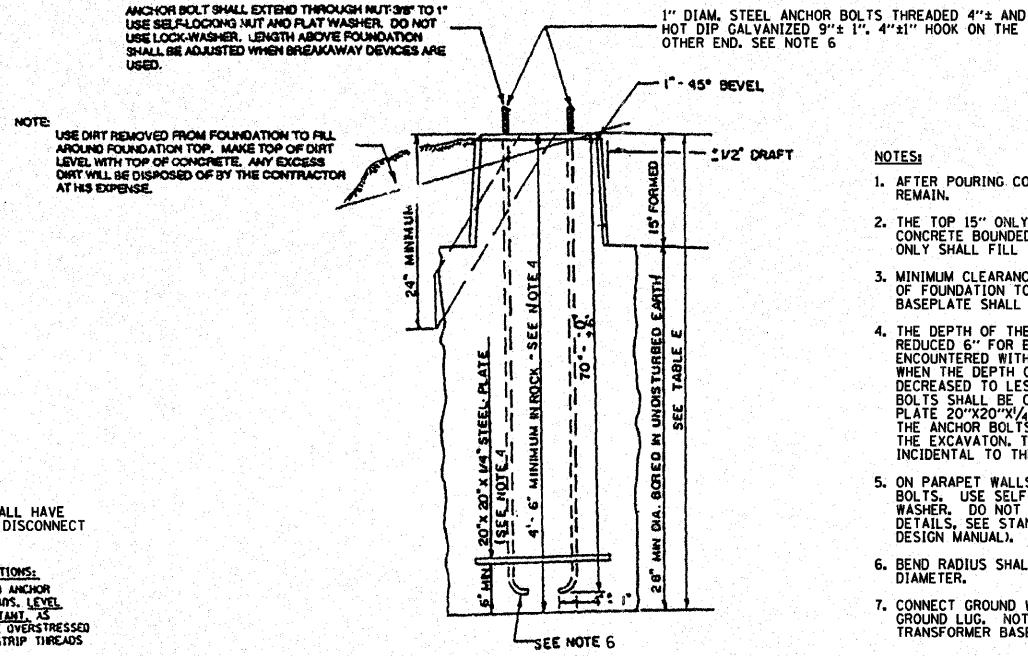
1. Provide weatherhead at height required by utility company, AmerenCIPS. Contact utility prior to construction and coordinate all service requirements.
2. Existing utility power pole. See plans for location.
3. Minimum 6 feet of cables for connection by utility company.
4. Provide fasteners to pole at 30 inch spacing or as otherwise required by utility company.
5. 30 amp, 240 volt, 2-pole, 3-wire solid neutral, NEMA 3R fusible disconnect. Fuses at 30 amps with proper fuse reducers.
6. 3-#10 XLP-USE cables in 3/4" galvanized heavy wall conduit. Side entrances into enclosure shall be made with sealing type locknuts. Provide grounding type insulating conduit bushings and proper bonding at meter, where required by the utility company.
7. 100 amp, 120/240 volt single phase meter base for underground service, provided by the Contractor to AmerenCIPS Standards.
8. 3-#10 XLP-USE cables in 3/4" galvanized heavy wall conduit.
9. 1-#6 bare copper grounding electrode conductor in 1/2" PVC conduit to a 3/8" x 8" ground rod driven 1' below grade.
10. 3-#10 XLP-USE cables in 3/4" galvanized heavy wall conduit for underground service conductors from utility transformer. Provide grounding type insulating bushings and proper bonding at meter, where required by the utility company.
11. Treated wood mounting frame shall consist of 2- 6" x 6" x 10' posts and a minimum of 4- 2" x 4" cross-members, all connected with 1/2" plated carriage bolts.
12. Lighting controller / photocell relay assembly.
13. 2-#10 and 1-#10 equipment grounding conductor in 3/4" PVC Schedules 80 conduit in trench or pushed to light poles.



**POLE BASE WIRING**

BREAKER SIZE	CONDUCTOR SIZE
30 AMP	#10 COPPER
40 AMP	#10 COPPER
60 AMP	#10 COPPER
100 AMP	#8 COPPER

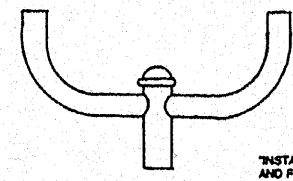
POLE BASE WIRING & LUMINAIRE MOUNTING  
NOT TO SCALE



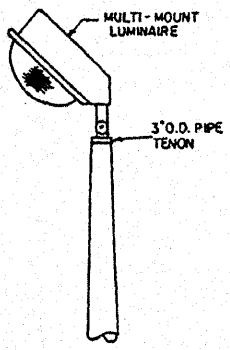
FRANGIBLE METAL BREAKAWAY COUPLING  
NO SCALE

**NOTES:**

1. AFTER POURING CONCRETE THE FORM SHALL REMAIN.
2. THE TOP 15" ONLY SHALL BE FORMED. CONCRETE BOUNDED BY UNDISTURBED EARTH ONLY SHALL FILL THE REMAINDER OF THE HOLE.
3. MINIMUM CLEARANCE FROM THE OUTSIDE EDGE OF FOUNDATION TO ANY PART OF THE POLE BASEPLATE SHALL BE 2"
4. THE DEPTH OF THE FOUNDATION MAY BE REDUCED 6" FOR EVERY FOOT OF ROCK ENCOUNTERED WITH A MINIMUM DEPTH OF 4'-6" WHEN THE DEPTH OF THE FOUNDATION IS DECREASED TO LESS THAN 6'-0" THE ANCHOR BOLTS SHALL BE CUT, THREADED, AND A STEEL PLATE 20"x20"x1/4" SHALL BE INSTALLED ON THE ANCHOR BOLTS 6" ABOVE THE BOTTOM OF THE EXCAVATION. THE COST SHALL BE INCIDENTAL TO THE FOUNDATION.
5. ON PARAPET WALLS USE 1/4" DIAM. ANCHOR BOLTS. USE SELF-LOCKING NUT AND FLAT WASHER. DO NOT USE LOCKWASHER (FOR DETAILS, SEE STANDARD 3.2.11 OF BRIDGE DESIGN MANUAL).
6. BEND RADIUS SHALL BE FOUR TIMES BOLT DIAMETER.
7. CONNECT GROUND WIRES TO POLE BASE GROUND LUG. DO NOT ANCHOR BOLTS OF TRANSFORMER BASE.



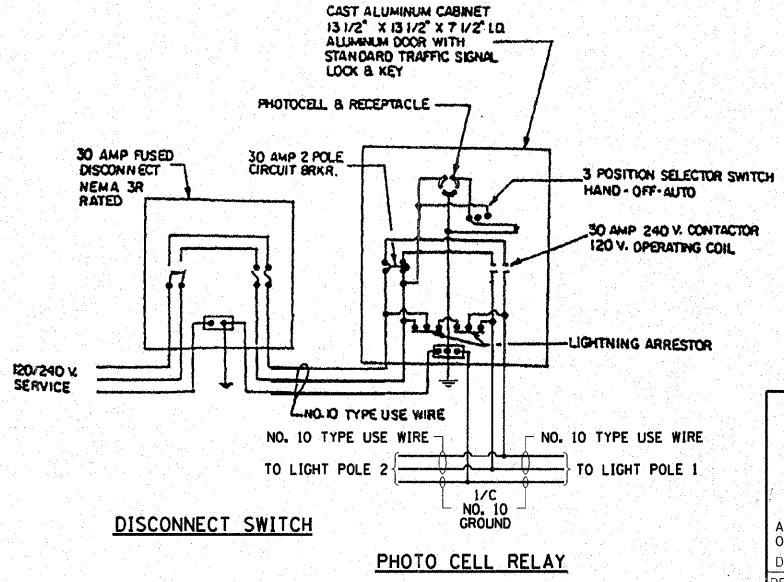
TWIN TENON  
NO SCALE



TENON  
NO SCALE

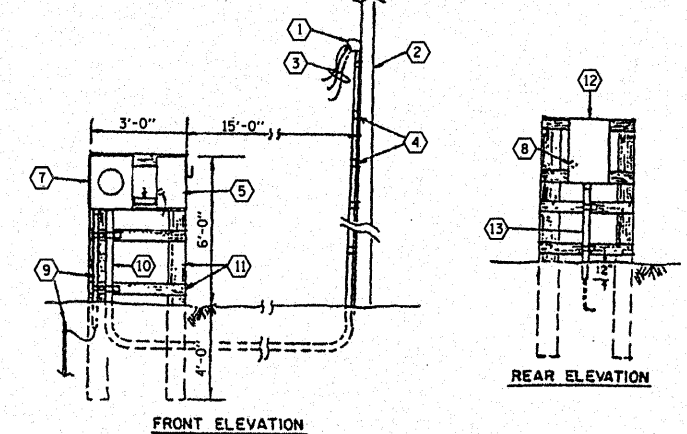
"INSTALL AND ORIENT ARM BRACKET OVER POLE TENON AND FIRMLY HAND TIGHTEN THE TWO SET SCREWS. USE THIRD HOLE IN ARM BRACKET AS A GUIDE TO DRILL A 2 1/8" DIAMETER HOLE THROUGH TENON. INSTALL AND TIGHTEN SELF-TAPPING SCREW. TIGHTEN SET SCREWS AN ADDITIONAL 1/4 TO 3/8 TURN WITH HEX KEY (NOT PROVIDED). INSTALL LOCKNUTS ON SET SCREWS IF THREADED PROJECTION ALLOWS."

POLE SHALL MEET AASHTO STANDARD SPECIFICATIONS FOR 80 M.P.H. WIND LOADING & 90 LB. 4.0 SQ. FT. E.R.A. LUMINAIRE.



DISCONNECT SWITCH

PHOTO CELL RELAY



FRONT ELEVATION

REAR ELEVATION

**HLR**  
Rice, Berry and Associates  
A Division of Hampton, Lenzini and Renwick, Inc.  
Civil & Structural Engineers  
801 S. Durkin Drive  
Springfield, Illinois 62704  
217-546-3400

Account Number  
03-47-0001-1  
Date: 09-26-06  
DESIGNED: L.F.S. | CHECKED: S.W.M. | DRAWN: W.J.S.

**LIGHTING DETAIL**  
SECTION 99-02118-00-FP  
F.A.U. 9713 / EAST PLEASANT HILL ROAD  
JACKSON COUNTY