

ROUTE NO.	SECTION	COUNTY	TOTAL SHEETS	SHEET NO.
M.S. 2700	05-00186-00-BR 06-00001-00-BR	JEFFERSON BLUFORD	31	1
FED. ROAD DIST. NO.	ILLINOIS CONTRACT NO. 99297			

INDEX OF SHEETS

1. COVER SHEET
2. SUMMARY OF QUANTITIES AND GENERAL NOTES
3. TYPICAL CROSS SECTIONS
4. INTERSECTION AND ENTRANCE DETAILS
5. EROSION CONTROL PLAN
- 6.-7. PLAN AND PROFILE SHEETS
- 8.-19. STATION CROSS SECTIONS
- 20.-30. BRIDGE PLANS
31. BORINGS

HIGHWAY STANDARDS:

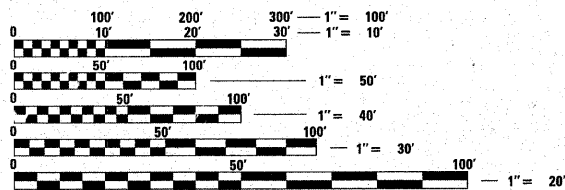
- 000001-04 STANDARD SYMBOLS, ABBREVIATIONS, AND PATTERNS
- 280001-03 TEMPORARY EROSION CONTROL SYSTEMS
- 515001-02 NAME PLATE FOR BRIDGES
- 606001-03 CONCRETE CURB TYPE B AND COMBINATION CONCRETE CURB AND GUTTER
- 630001-07 *STEEL PLATE BEAM Guardrail*
- 631026-03 TRAFFIC BARRIER TERMINAL, TYPE 5
- 702001-06 TRAFFIC CONTROL DEVICES
- BLR 21-6 TYPICAL APPLICATION OF TRAFFIC CONTROL DEVICES FOR CONSTRUCTION ON RURAL LOCAL HIGHWAYS
- BLR 23-1 TRAFFIC BARRIER TERMINAL TYPE 1

UTILITIES

TRI-COUNTY ELECTRIC COOPERATIVE, INC.
P.O. BOX 309
3906 BROADWAY STREET
MOUNT VERNON, ILLINOIS 62864
ATTN: SUE ECHOLS
618-244-5151

VILLAGE OF BLUFORD
GAS & WATER DEPARTMENT
1005 WEST 4TH STREET
BLUFORD, ILLINOIS 62814-1303

DESIGN FUNCTIONAL CLASSIFICATION:
LOCAL ROAD 0-250 ADT
DESIGN TRAFFIC: 150 ADT
DESIGN SPEED: 30 M.P.H.



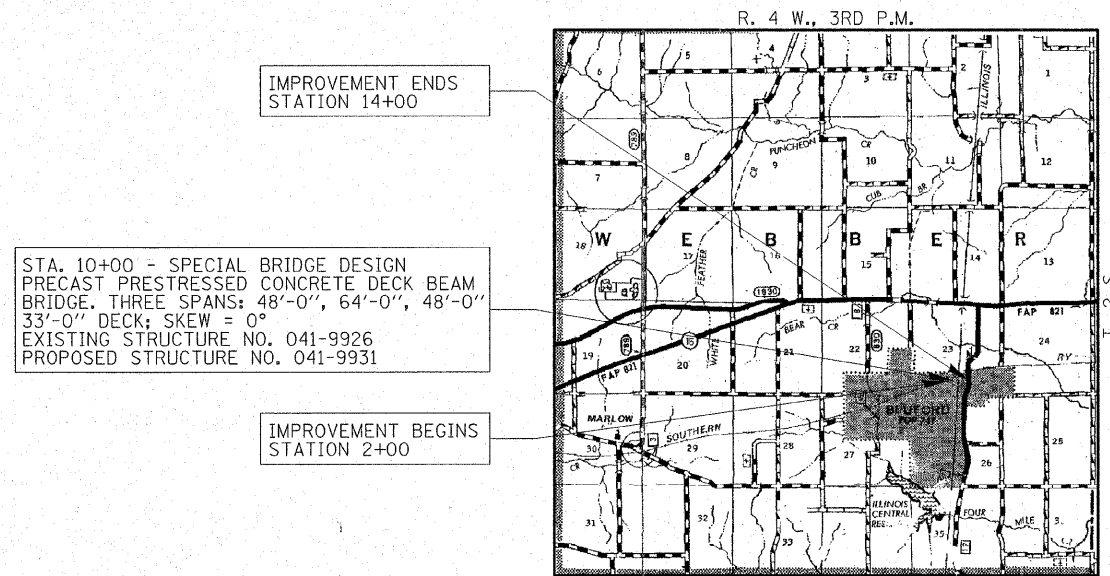
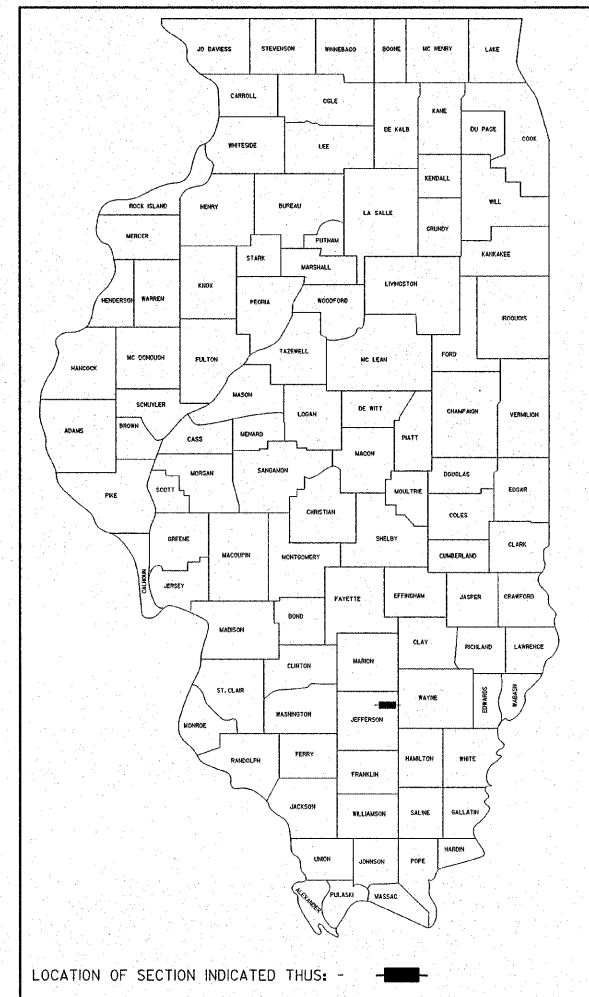
FULL SIZE PLANS HAVE BEEN PREPARED USING STANDARD ENGINEERING SCALES. REDUCED SIZED PLANS WILL NOT CONFORM TO STANDARD SCALES. IN MAKING MEASUREMENTS ON REDUCED PLANS, THE ABOVE SCALES MAY BE USED.

CONTRACT NO. 99297

JEFFERSON COUNTY / VILLAGE OF BLUFORD

STATE OF ILLINOIS DEPARTMENT OF TRANSPORTATION DIVISION OF HIGHWAYS PLANS FOR PROPOSED G.C.P.F. / HIGHWAY BRIDGE PROGRAM

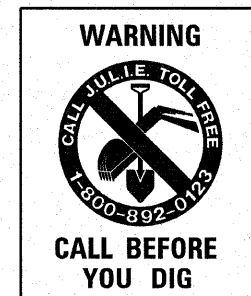
SECTIONS 05-00186-00-BR / 06-00001-00-BR JEFFERSON COUNTY / VILLAGE OF BLUFORD SHORT STREET / MS 2700 OVER C.N. / I.C. RAILROAD AT M.P. 40.8 PROJECT BROS-081(49) C-99-575-06



STA. 10+00 - SPECIAL BRIDGE DESIGN
PRECAST PRESTRESSED CONCRETE DECK BEAM
BRIDGE. THREE SPANS: 48'-0", 64'-0", 48'-0"
33'-0" DECK; SKEW = 0°
EXISTING STRUCTURE NO. 041-9926
PROPOSED STRUCTURE NO. 041-9931

LAYOUT

APPROXIMATE SCALE. 1 MILE
M.L. NET LENGTH OF SECTION = 1,200.00 FEET = 0.227 MILES
S.R. NET LENGTH OF SECTION = 249.77 FEET = 0.047 MILES
TOTAL = 0.275 MILES



AGENCY RESPONSIBLE FOR LETTING	
APPROVED	<i>March 27, 2007</i> <i>Steve Schurba</i> JEFFERSON COUNTY
APPROVED	<i>March 27, 2007</i> <i>William C. Johnson</i> VILLAGE OF BLUFORD
PASSED	<i>APRIL 4, 2007</i> <i>Dennis W. Hill</i> DISTRICT NINE ENGINEER OF LOCAL ROADS & STREETS
Releasing For Bid Based on Limited Review	<i>4-4, 2007</i> <i>Mary C. Lami</i> DEPUTY DIRECTOR OF HIGHWAYS REGION FIVE ENGINEER STATE OF ILLINOIS DEPARTMENT OF TRANSPORTATION

DATE: *March 22, 2007*
BY: *Steven W. Megginson*
LICENSE EXPIRES: NOVEMBER 30, 2007



HAMPTON, LENZINI & RENWICK, INC.
CIVIL & STRUCTURAL ENGINEERS
LAND SURVEYORS
 3085 STEVENSON DRIVE, SUITE 201
SPRINGFIELD, ILLINOIS 62703
(217) 546-3400
ELGIN • SPRINGFIELD

PROJECT NUMBER: 12-49-0005-1 DATE: 03/21/07

SECTIONS 05-00186-00-BR / 06-00001-00-BR