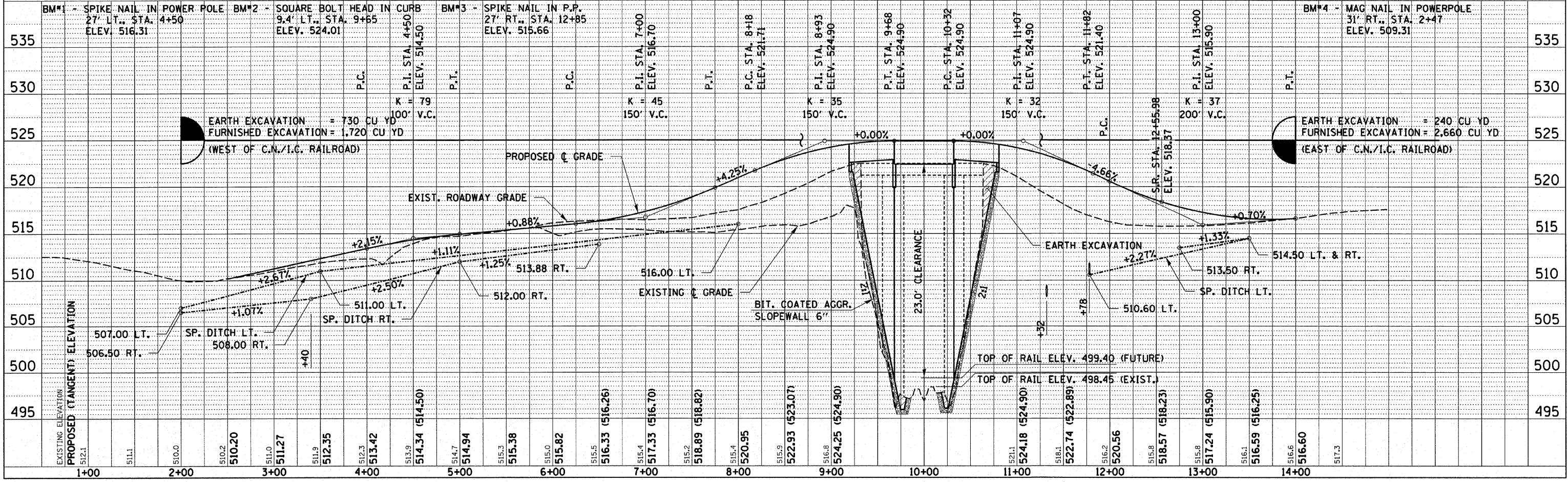
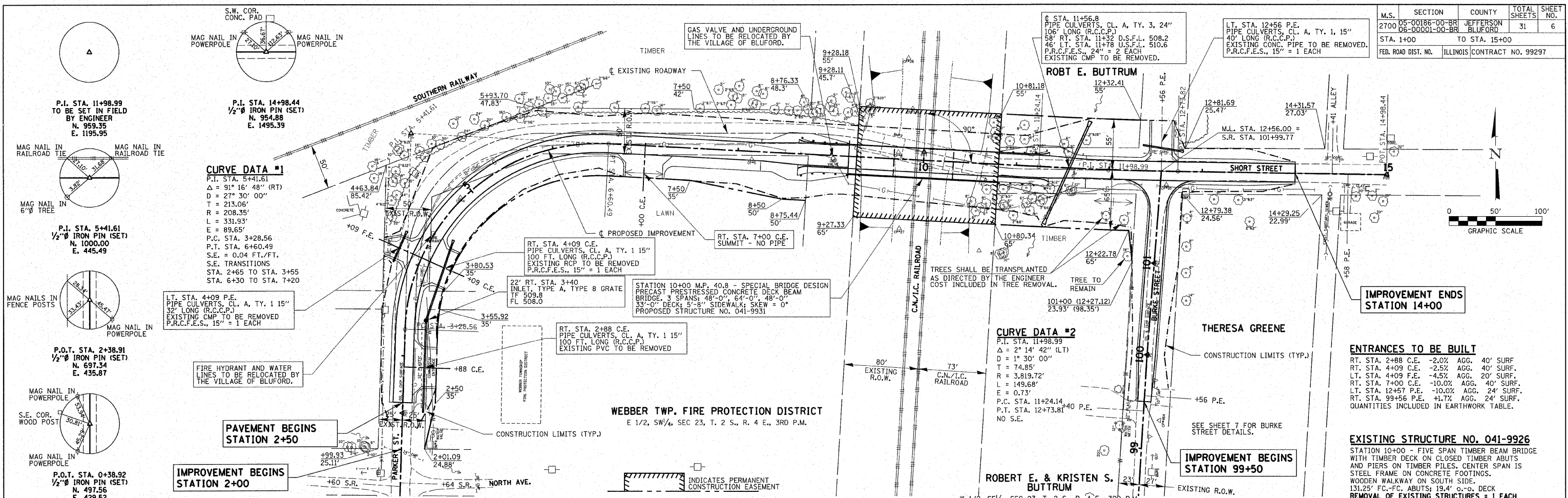


DATE	BY	CHECKED

DATE	BY	CHECKED



CURVE DATA #1
P.I. STA. 5+41.61
Δ = 91° 16' 48" (RT)
D = 27° 30' 00"
T = 213.06'
R = 208.35'
L = 331.93'
E = 89.65'
P.C. STA. 3+28.56
P.T. STA. 6+60.49
S.E. = 0.04 FT./FT.
S.E. TRANSITIONS
STA. 2+65 TO STA. 3+55
STA. 6+30 TO STA. 7+20

CURVE DATA #2
P.I. STA. 11+98.99
Δ = 2° 14' 42" (LT)
D = 1° 30' 00"
T = 74.85'
R = 3,819.72'
L = 149.68'
E = 0.73'
P.C. STA. 11+24.14
P.T. STA. 12+73.81
NO S.E.

ENTRANCES TO BE BUILT
RT. STA. 2+88 C.E. -2.0% AGG. 40' SURF
RT. STA. 4+09 C.E. -2.5% AGG. 40' SURF.
LT. STA. 4+09 F.E. -4.5% AGG. 20' SURF.
RT. STA. 7+00 C.E. -10.0% AGG. 40' SURF.
LT. STA. 12+57 P.E. -10.0% AGG. 24' SURF.
RT. STA. 99+56 P.E. +1.7% AGG. 24' SURF.
QUANTITIES INCLUDED IN EARTHWORK TABLE.

EXISTING STRUCTURE NO. 041-9926
STATION 10+00 - FIVE SPAN TIMBER BEAM BRIDGE WITH TIMBER DECK ON CLOSED TIMBER ABUTS AND PIERS ON TIMBER PILES. CENTER SPAN IS STEEL FRAME ON CONCRETE FOOTINGS. WOODEN WALKWAY ON SOUTH SIDE. 131.25' FC-FC. ABUTS; 19.4' c-c. DECK. REMOVAL OF EXISTING STRUCTURES = 1 EACH

IMPROVEMENT BEGINS STATION 2+00

IMPROVEMENT BEGINS STATION 99+50

IMPROVEMENT ENDS STATION 14+00

WEBBER TWP. FIRE PROTECTION DISTRICT
E 1/2, SW 1/4, SEC 23, T. 2 S., R. 4 E., 3RD P.M.

ROBERT E. & KRISTEN S. BUTTRUM
W 1/2, SE 1/4, SEC 23, T. 2 S., R. 4 E., 3RD P.M.

EARTH EXCAVATION = 730 CU YD
FURNISHED EXCAVATION = 1,720 CU YD
(WEST OF C.N./I.C. RAILROAD)

EARTH EXCAVATION = 240 CU YD
FURNISHED EXCAVATION = 2,660 CU YD
(EAST OF C.N./I.C. RAILROAD)

BIT. COATED AGGR. SLOPEWALL 6"

TOP OF RAIL ELEV. 499.40 (FUTURE)

TOP OF RAIL ELEV. 498.45 (EXIST.)