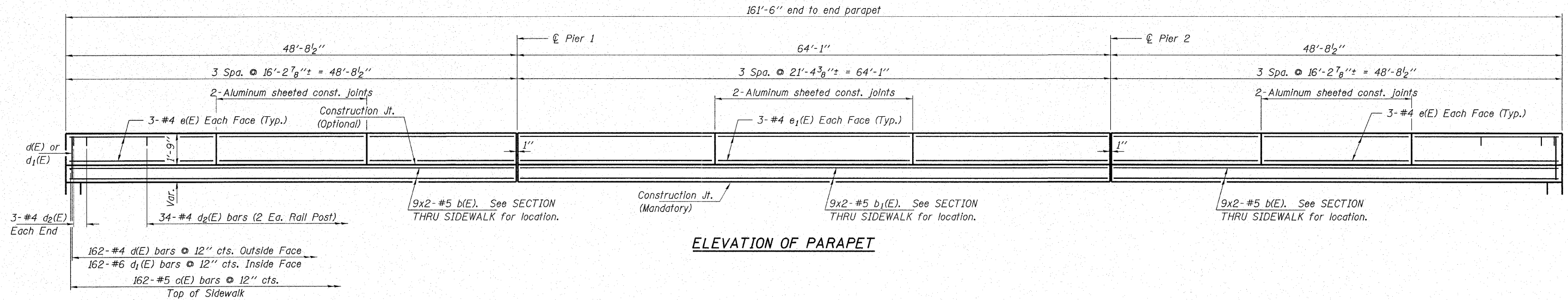
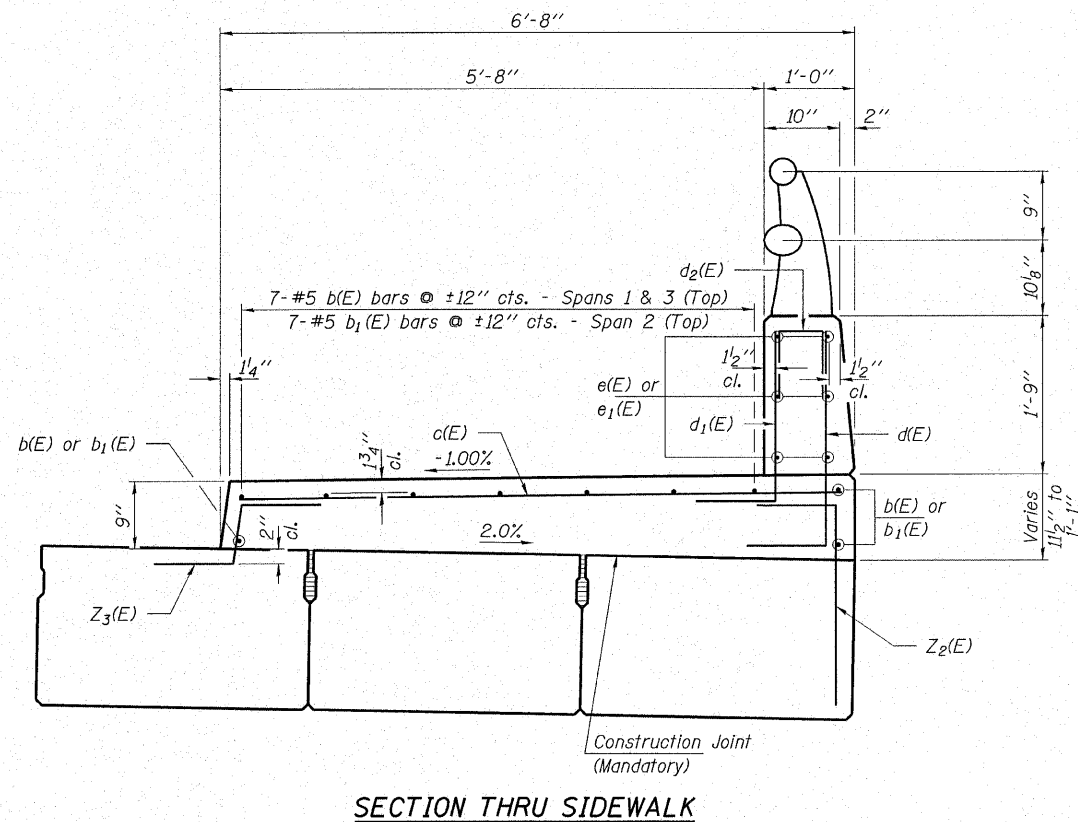


ELEVATION OF RAILING



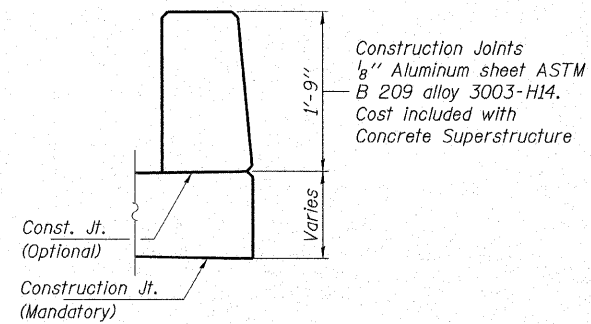
ELEVATION OF PARAPET

MIN. BAR LAPS
#5.....1'-7"



SECTION THRU SIDEWALK

Note: Sidewalk thickness shall be adjusted based on camber of beam to pour sidewalk on longitudinal grade parallel with profile grade.

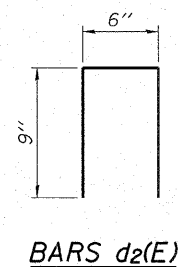
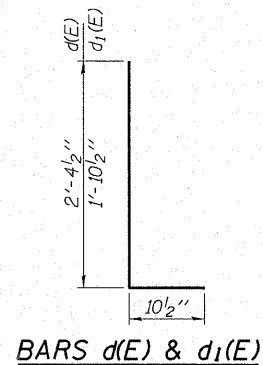


PARAPET JOINT DETAILS

**SUPERSTRUCTURE
BILL OF MATERIAL**

Bar	No.	Size	Length	Shape
b(E)	36	#5	25'-0"	—
b1(E)	18	#5	32'-8"	—
c(E)	162	#5	6'-4"	—
d(E)	162	#4	3'-3"	—
d1(E)	162	#6	2'-9"	—
d2(E)	40	#4	2'-0"	—
e(E)	36	#4	15'-11"	—
e1(E)	18	#4	21'-1"	—
Concrete Superstructures			Cu. Yd.	44.6
Protective Coat			Sq. Yd.	100
Reinforcement Bars, Epoxy Coated			Pound	4,320

Note: Quantity for Protective Coat includes parapet and sidewalk.



HAMPTON, LENZINI & RENWICK, INC.
CIVIL & STRUCTURAL ENGINEERS
LAND SURVEYORS
3085 STEVENSON DRIVE, SUITE 201
SPRINGFIELD, ILLINOIS 62703
(217) 546-3400

ELGIN • SPRINGFIELD

PROJECT NUMBER: 12-49-0005-1 DATE: 03/21/07
DESIGNED: R.J.P. CHECKED: S.W.M. DRAWN: D.B.

PARAPET DETAILS
SECTIONS 05-00186-00-BR / 06-00001-00-BR
VILLAGE OF BLUFORD
JEFFERSON COUNTY
STRUCTURE NO. 041-9931 / STATION 10+00