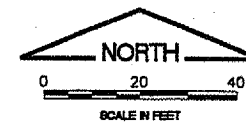
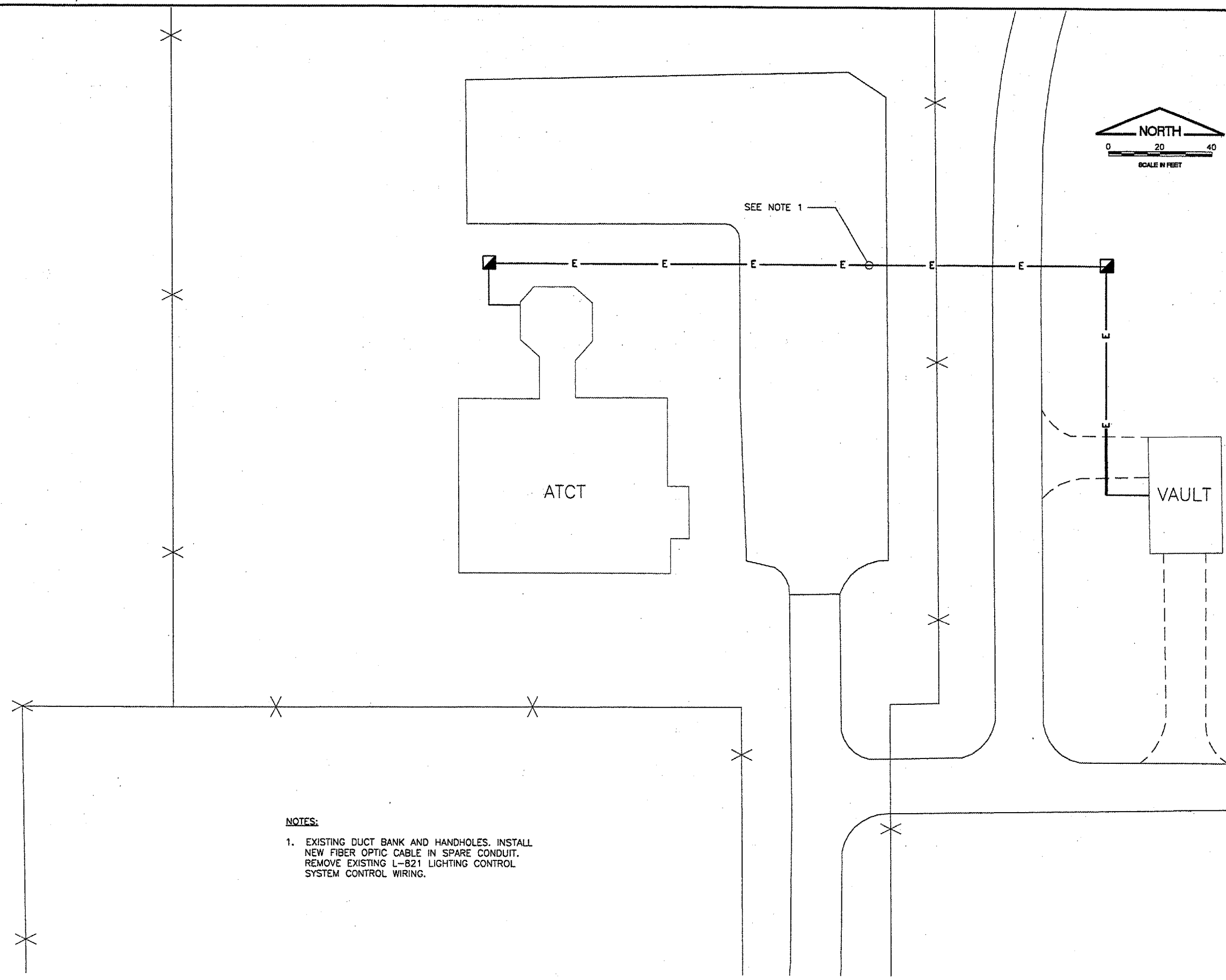
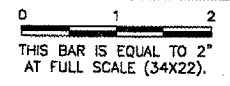


CA003

K:\Springfield\0503803\Draw\Sheets
FILE: SITE PLAN.dwg
UPDATE BY: Allan Draughton
PLOT DATE: 4/30/2007 3:40 PM
tbinfo
PFENCE4




REVISIONS		
NUMBER	BY	DATE



NOTES:

- EXISTING DUCT BANK AND HANDHOLES. INSTALL NEW FIBER OPTIC CABLE IN SPARE CONDUIT. REMOVE EXISTING L-821 LIGHTING CONTROL SYSTEM CONTROL WIRING.

VAULT AND ATCT SITE PLAN


SPRINGFIELD AIRPORT AUTHORITY
ABRAHAM LINCOLN CAPITAL AIRPORT
SPRINGFIELD, ILLINOIS

CONSTRUCT RUNWAY 13/31 RSA IMPROVEMENTS
EXISTING VAULT AND ATCT SITE PLAN

© Copyright CMT, Inc.
CMT
 CRAWFORD, MURPHY & TILLY, INC.
 CONSULTING ENGINEERS
 License No. 184-000610

DESIGN BY: WDP
 DRAWN BY: CMT
 CHECKED BY: *RW*
 APPROVED BY: *RW*
 DATE: 04/24/07
 JOB No: 05035-03

IL PROJ. NO. SPI-3488
 AIP PROJ. NO. 3-17-0096-42
 SHEET 54 OF 79 SHEETS