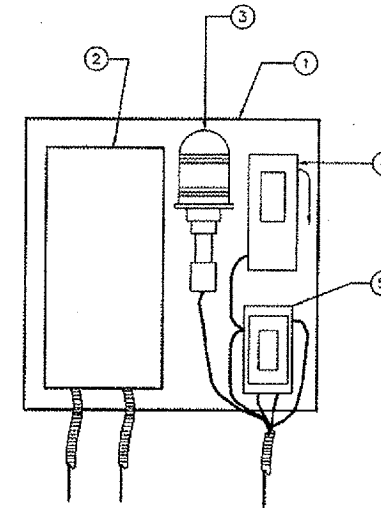


**NOTES**

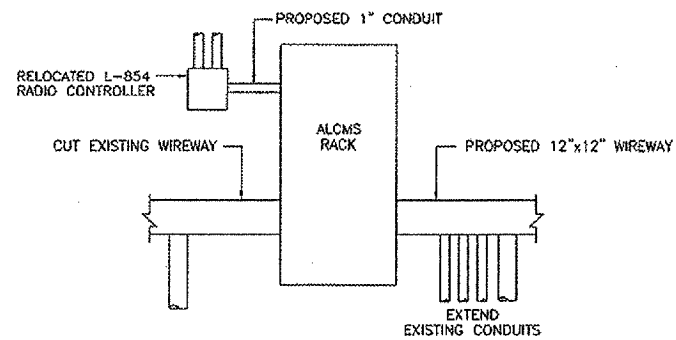
1. INSTALL PROPOSED INTERFACE CONTROL PANEL AND IRMS PANEL ON UNITSTRUT. MATCH EXISTING CONDITIONS. COORDINATE SIZE AND CONDUIT OPENINGS WITH ALCMS MANUFACTURER.
2. INSTALL MALE AND FEMALE L-823 CONNECTOR TO CONNECT AIRFIELD LIGHTING CIRCUITS IN HIGH VOLTAGE WIREWAY.
3. PROPOSED S-1 CUT-OUT SHALL BE SGO SERIES BY SIEMENS OR EQUAL. CONNECT SECONDARY SIDE OF THE S-1 CUT-OUT TO IRMS PANEL PER ALCMS MANUFACTURER.

**EQUIPMENT NOMENCLATURE**

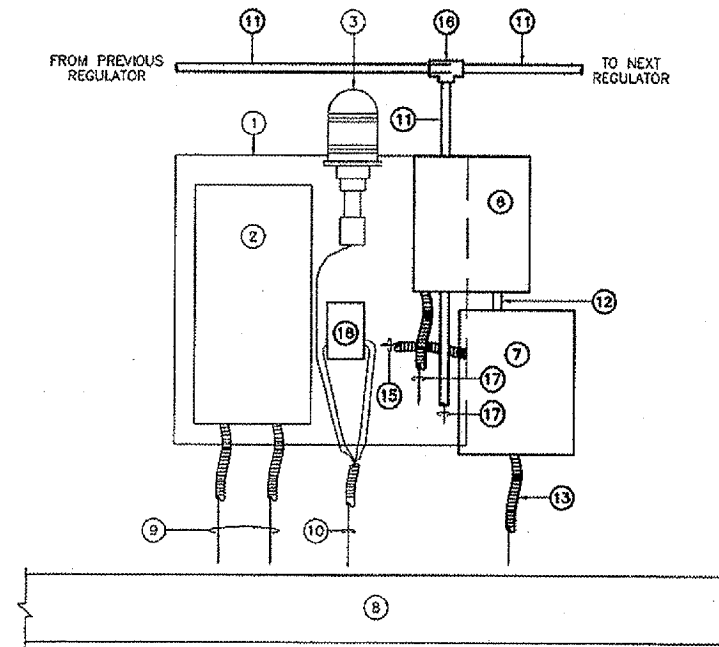
- ① EXISTING EQUIPMENT MOUNTING PLATE TO REMAIN.
- ② EXISTING REGULATOR DISCONNECT SWITCH TO REMAIN.
- ③ EXISTING RUNWAY/TAXIWAY INDICATOR LIGHT TO BE RELOCATED.
- ④ EXISTING GROUNDING SWITCH TO BE REMOVED.
- ⑤ EXISTING S-1 PLUG CUT-OUT TO BE REMOVED.
- ⑥ PROPOSED INTERFACE CONTROL PANEL - SEE NOTE 1.
- ⑦ PROPOSED INSULATION RESISTANCE MEASURING SYSTEM (IRMS) - SEE NOTE 1.
- ⑧ EXISTING LOW VOLTAGE AND HIGH VOLTAGE 12"x12" WIREWAY - SEE NOTE 2.
- ⑨ EXISTING INCOMING AND OUTGOING 600V POWER CABLES IN FLEX CONDUIT TO LOW VOLTAGE WIREWAY.
- ⑩ EXISTING 4 #8 5KV AIRFIELD LIGHTING CABLES IN FLEX CONDUIT TO HIGH VOLTAGE WIREWAY.
- ⑪ PROPOSED (2) 24 AWG SHIELDED TWISTED PAIRS IN 1" GRS CONDUIT.
- ⑫ PROPOSED DATA CABLES IN 1" GRS CONDUIT.
- ⑬ PROPOSED 2 #8 5KV, L-824 TYPE C AIRFIELD LIGHTING CABLES IN 1" FLEX CONDUIT TO HIGH VOLTAGE WIREWAY.
- ⑭ PROPOSED 2 #10 THWN, 1 #12 GND. IN 3/4" FLEX CONDUIT TO LOW VOLTAGE WIREWAY FOR UPS POWER.
- ⑮ PROPOSED 2 #8 5KV, L-824 TYPE C CABLES IN 1" FLEX CONDUIT TO S-1 PLUG CUT-OUT.
- ⑯ PROPOSED 1" TX CONDUIT BODY WITH GASKET AND COVER.
- ⑰ PROPOSED DATA/CONTROL CABLES (AS REQUIRED BY ALCMS MANUFACTURER) IN 1" CONDUIT TO EXISTING REGULATOR.
- ⑱ PROPOSED S-1 CUT-OUT. SEE NOTE 3.



**EXISTING EQUIPMENT MOUNTING PLATE DETAIL**  
 NOT TO SCALE

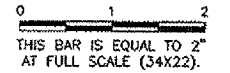


**ALCMS RACK ELEVATION**  
 NOT TO SCALE



**TYPICAL INTERFACE CONTROL AND IRMS PANEL MOUNTING DETAIL**  
 NOT TO SCALE

REVISIONS		
NUMBER	BY	DATE



**DUPAGE AIRPORT**  
**WEST CHICAGO, ILLINOIS**  
**AIRFIELD LIGHTING CONTROL AND MONITORING SYSTEM (ALCMS)**  
**ELECTRICAL DETAILS**

© Copyright GMT, Inc.

**GMT**  
 CRAWFORD MURPHY & TILLY, INC.  
 CONSULTING ENGINEERS  
 License No. 184-000813

**DDM**  
 DuPage Airport

DESIGN BY:	AB
DRAWN BY:	JRO
CHECKED BY:	DLP
APPROVED BY:	AB
DATE:	04/20/07
JOB No:	07257-03