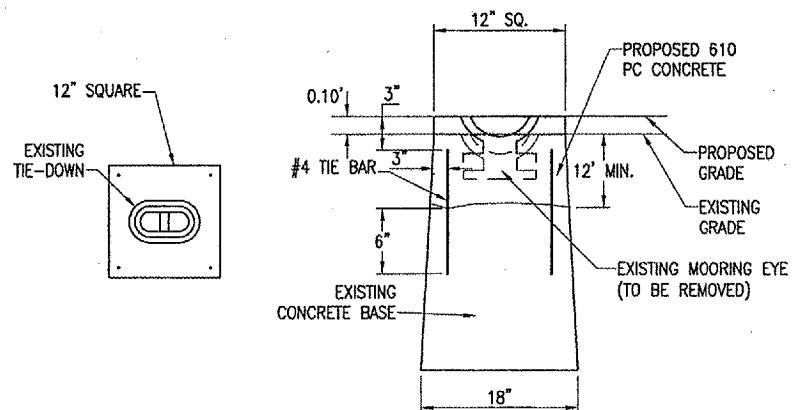


APRON QUANTITIES				
ITEM NO.	DESCRIPTION	UNIT	QUANTITY	AS BUILT QUANTITY
AR201661	CLEAN & SEAL BITUMINOUS CRACKS	L.F.	190	
AR401650	BUTT JOINT CONSTRUCTION	S.Y.	148	
AR401915	REM. & REP. BIT. PAVEMENT-TYPE A	S.Y.	178	



**TIE-DOWN ADJUSTMENT DETAIL**  
"NOT TO SCALE"

**TIE-DOWN ADJUSTMENT NOTE**

SIX OF THE EXISTING TIE-DOWNS WILL BE RE-ESTABLISHED AT THE SAME LOCATIONS. THE EXISTING TIE-DOWN MOORING EYES WILL BE REMOVED FROM THE EXISTING CONCRETE BASE AND REUSED FOR THE ADJUSTMENT.

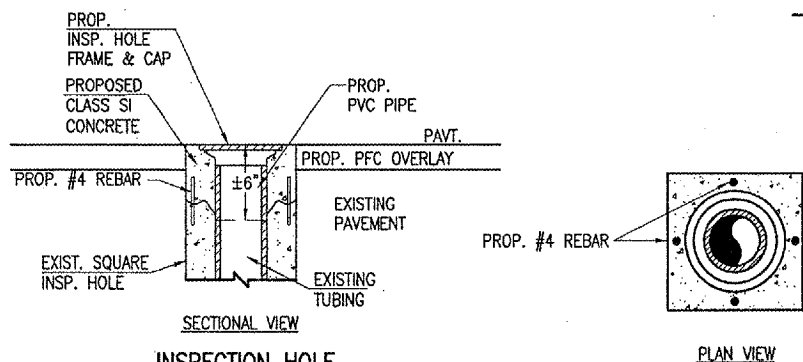
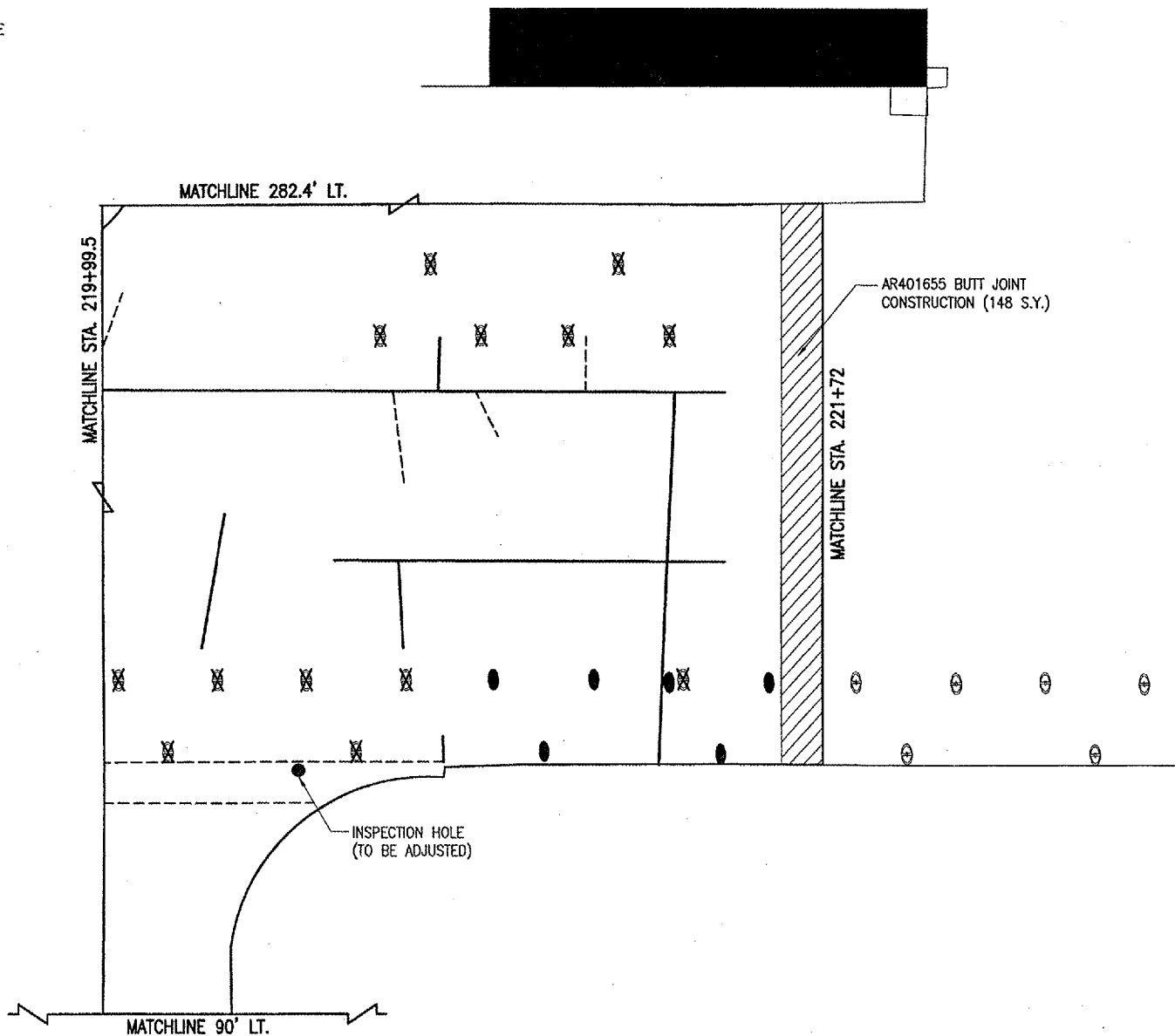
ALL LOOSE CONCRETE WILL BE REMOVED AND DISPOSED OF OFF SITE.

FOUR (4) NO. 4 TIE-BARS WILL BE DRILLED AND GROUTED INTO THE EXISTING CONCRETE BASE AT EACH CORNER.

THE CONCRETE WILL BE POURED TO THE PROPOSED PAVEMENT ELEVATION.

THERE ARE 13 TIE-DOWNS THAT WILL NOT BE ADJUSTED AS INDICATED BY AN "X". AS PART OF THE ADJUST TIE-DOWN WORK ITEM, THESE TIE-DOWNS WILL BE CLEANED OF ANY DEBRIS AND FILLED WITH A NON-SHRINK GROUT OR OTHER MATERIAL APPROVED BY THE RESIDENT ENGINEER.

THIS ITEM OF WORK WILL BE PAID FOR UNDER:  
ITEM AR510940 "ADJUST TIE-DOWN" \_\_\_\_\_ 6 EACH.



**INSPECTION HOLE ADJUSTMENT DETAIL**  
"NOT TO SCALE"

**INSPECTION HOLE ADJUSTMENT NOTE**

THE CONTRACTOR WILL PLUG THE EXISTING INSPECTION HOLE TO PREVENT DEBRIS FROM ENTERING THE EDGEDRAIN PIPING. THE CONTRACTOR WILL REMOVE THE TOP 6 INCHES OF THE INSPECTION HOLE INCLUDING THE FRAME AND LID.

FOUR--NO. 4 REBAR WILL BE DRILLED AND GROUTED INTO PLACE AS SHOWN ON THIS SHEET. THE CONTRACTOR WILL PROVIDE AND INSTALL A SMALL PIECE OF PVC PIPE, AN INSPECTION HOLE FRAME & LID AND FORM THE STRUCTURE TO THE ELEVATION OF THE PROPOSED PAVEMENT GRADE.

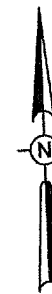
THE CONTRACTOR SHALL USE 610 "STRUCTURAL PORTLAND CEMENT CONCRETE".

THE PROPOSED FRAME AND LID SHALL BE NEENAH R-6013 OR APPROVED EQUAL.

THE PVC PIPE SHALL BE SCHEDULE 40 COMMON WATERPIPE APPROVED BY THE RESIDENT ENGINEER.

**LEGEND**

- EXISTING PAVEMENT
- PROPOSED OVERLAY
- PROPOSED BUTT JOINT CONSTRUCTION
- PROPOSED REM. & REP. BIT. PAVEMENT - TYPE A (4' WIDE)
- CLEAN AND SEAL BITUMINOUS CRACKS
- EXISTING TIE-DOWN (TO REMAIN)
- EXISTING TIE-DOWN (TO BE PLUGGED)
- EXISTING TIE-DOWN (TO BE ADJUSTED)
- EXISTING INSPECTION HOLE (TO BE ADJUSTED)



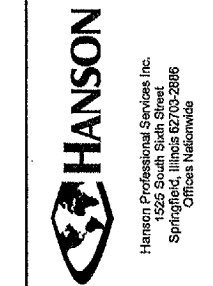
0' 10' 20' 40'  
FULL SIZE SCALE: 1" = 20'  
HALF SIZE SCALE: 1" = 40'

DATE	REVISION	BY

EFFINGHAM COUNTY  
MEMORIAL AIRPORT  
EFFINGHAM, ILLINOIS

IL PROJ.: 1H2-3688 A.I.P. PROJ.: 3-17-0040-B10

Project No. 80407RWTD_0800	DATE 02/15/07
Revision R-111PRP.DWG	DATE 02/15/07
Scale 1" = 20'	DATE 04/23/07
Date 02/15/07	
LAYOUT	CCC
DRAWN	KDM
REVIEWED	CAH



RECONSTRUCT  
RUNWAY 1-19  
PROPOSED PAVEMENT  
PREPARATION PLAN  
APRON

APR 27, 2007 8:24 AM BAK I:\AIRPORTS\EFFINGHAM\804-07RWY\AIRPORT\SHEETS\R-111PRP.DWG - APRON