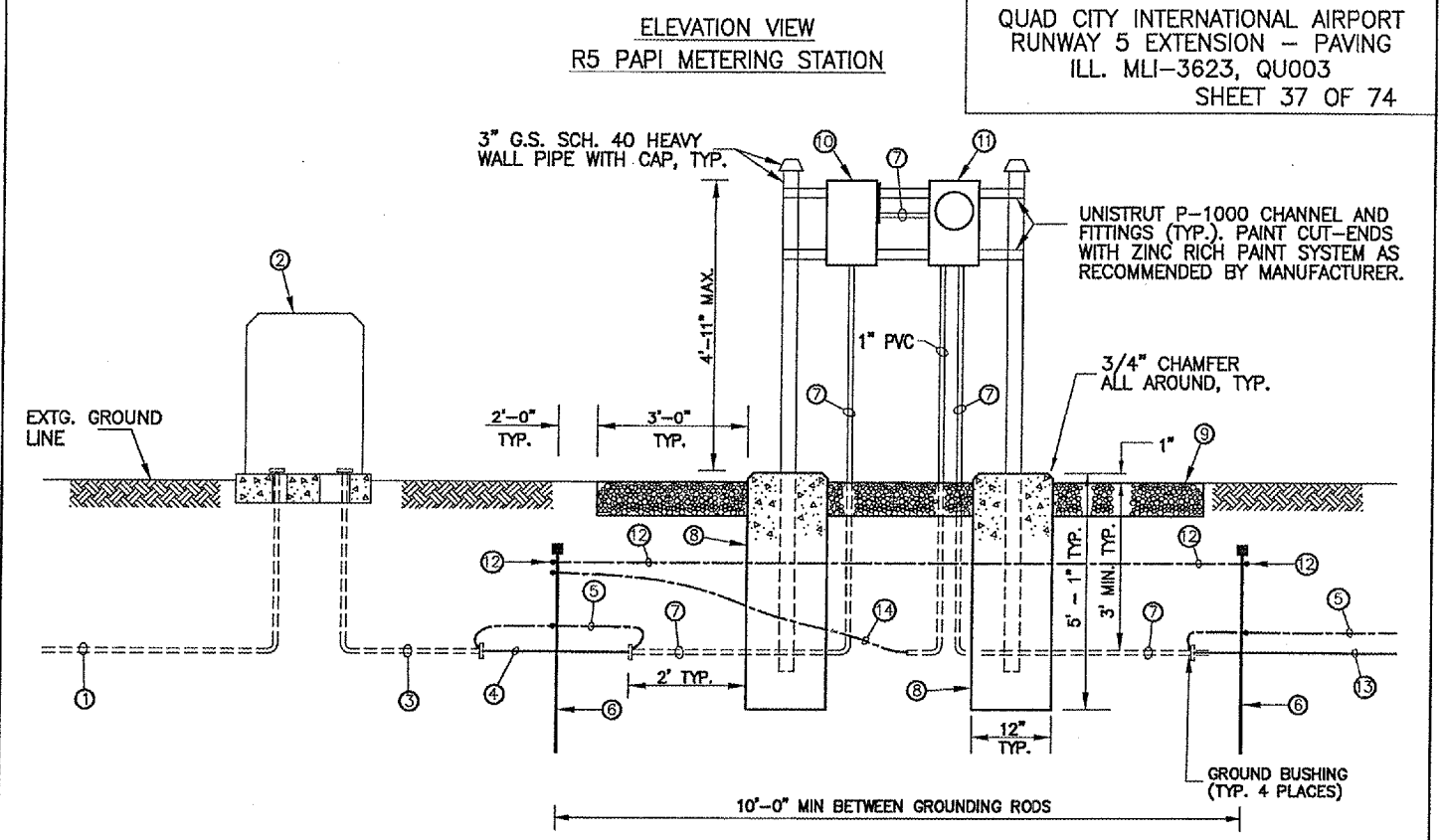


CENTERLINE PROFILE

	PAPI LHA # 1	PAPI LHA # 2	PAPI LHA # 3	PAPI LHA # 4
LOCATION OF LHA	55' OFF PVMT.***	25' FROM LHA #1**	25' FROM LHA #2**	25' FROM LHA #3**
EXISTING OR PROPOSED RUNWAY CENTERLINE ELEVATION	578.64'	578.64'	578.64'	578.64'
APPROXIMATE EXISTING GROUND ELEV. AT PAPI LHA UNIT	575.95'	575.92'	575.76'	575.57'
PROPOSED PAPI LHA APERTURE CENTERLINE ELEVATION	579.64'	579.64'	579.64'	579.64'
PROPOSED LAMP AIMING ANGLE	4° 30'	4° 10'	3° 50'	3° 30'

EFFECTIVE VISUAL GLIDE PATH = 4.0°
 RESULTING THRESHOLD CROSSING HEIGHT = 46.22'

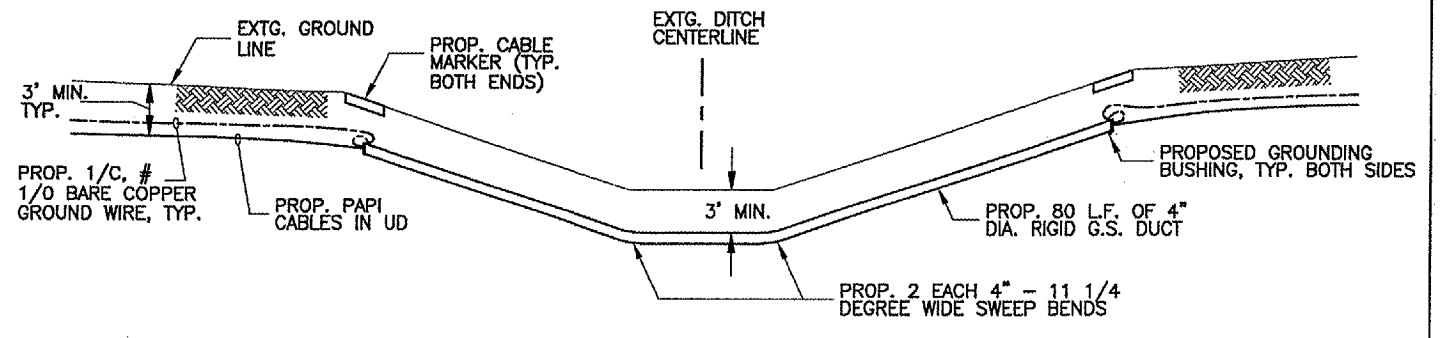
CONTRACTOR SHALL AIM THE PROPOSED PAPI UNITS TO THE PROPOSED LAMP AIMING ANGLE AS INDICATED ON THIS DRAWING AND DIRECTED BY THE FAA. THERE SHALL BE NO EXPOSED POWER/CONTROL CABLES BETWEEN THE POINT WHERE THEY LEAVE THE UNDERGROUND AND WHERE THEY ENTER THE EQUIPMENT ENCLOSURES. THESE CABLES SHALL BE ENCLOSED IN RIGID CONDUIT OR IN FLEXIBLE, WATERTIGHT CONDUIT WITH BREAKABLE COUPLINGS AT THE GRADE OR THE HOUSING COVER, AS SHOWN IN APPLICABLE DETAIL.



NUMBERED LEGEND:

- ① EXTG. MIDAMERICAN (MEC) 277/480V PRIMARY POWER CABLES.
- ② EXTG. MIDAMERICAN (MEC) 277/480V PAD MOUNTED 277 / 480V-3 PHASE-4W TRANSFORMER.
- ③ PROPOSED 2" G.S. STEEL CONDUIT WITH WIDE SWEEP ELBOW, GROUNDING BUSHINGS, AND RIGID STL. TO PVC FITTING. GROUND PER MIDAMERICAN REQUIREMENTS.
- ④ PROPOSED 4-1/C #2, 600V UNDERGROUND POWER CABLES IN 2" PVC CONDUIT BETWEEN ② AND ①. CABLES CONNECTED TO TRANSFORMER PER MIDAMERICAN REQUIREMENTS. CONTRACTOR SHALL COORDINATE WITH MEC AND MEET MEC REQUIREMENTS.
- ⑤ 1/C, #1/0 BARE COPPER GROUND WIRE. CADWELD CONNECTIONS ARE REQUIRED TO ALL GROUND RODS, GROUND BUSHINGS, ETC.
- ⑥ 3/4"x10' COPPER CLAD GROUND RODS 1'-6" MIN. COVER.
- ⑦ PROPOSED 2" G.S. STEEL CONDUIT WITH WIDE SWEEP ELBOW, GROUNDING BUSHING, AND RIGID STL. TO PVC FITTING.
- ⑧ PROPOSED P-610 SPEC. 12" DIA. CONCRETE FOUNDATION.
- ⑨ PROPOSED IDOT CA-6 COMPACTED CRUSHED ROCK, 6" MIN. DEPTH, ON GEOTEXTILE FABRIC.
- ⑩ PROPOSED NEW 277 / 480V SERVICE DISCONNECT SWITCH (100 / 3 PHASE, 4 WIRE @ 100A - NEMA 4 OR TYPE & STYLE AS SPECIFIED BY MEC). CONTRACTOR SHALL COORDINATE WITH MEC AND MEET MEC REQUIREMENTS. LABEL BOX: 277/480V POWER FEED FOR R5 L-880 PAPI
- ⑪ PROPOSED NEW METER & SOCKET (7 PIN, 200 AMP, 3 PHASE, 277 / 480V OR TYPE & STYLE AS SPECIFIED BY MEC). CONTRACTOR SHALL COORDINATE WITH MEC AND MEET MEC REQUIREMENTS.
- ⑫ 1/C, #4/0 BARE COPPER PERIMETER GROUND WIRE ALL AROUND CRUSHED ROCK AREA. INSTALL GROUND WIRE AT 2' BELOW GROUND. CAD WELDED CONNECTIONS TO ALL GROUND RODS, GROUND BUSHINGS, ETC.
- ⑬ PROPOSED 3-1/C #6, 600V UNDERGROUND POWER CABLES IN 2" UNIT DUCT BETWEEN ① AND THE POWER AND CONTROL STATION (17+06, LT. 240').
- ⑭ 1/C, #2 BARE COPPER GROUND WIRE IN 1" PVC.

THE COST OF ABOVE ITEMS SHALL BE INCLUDED IN CONTRACT ITEM AR801622.



DITCH CROSSING DETAIL
 PROFILE VIEW
 (AT LOCATION ③)

THE COST OF ABOVE ITEMS SHALL BE INCLUDED IN CONTRACT ITEM AR801622.