

WH006



CRAWFORD, MURPHY & TILLY, INC.
CONSULTING ENGINEERS

Whiteside County **AIRPORT**
JOSEPH H. BITTORF FIELD

Whiteside County
Airport

Sterling / Rock Falls,
Illinois

Whiteside County
Airport

AIP: 3-17-0098-XX
SQI-3694

Recable Airfield

**FINAL
SUBMITTAL**

Revisions

No.	Date	Description

0 1
THIS BAR IS EQUAL TO 1"
AT FULL SCALE (17 X 11).

DESIGN BY: CMT- RFD

DRAWN BY: CMT- RFD

CHECKED BY: CMT- RFD

APPROVED BY: JGP

DATE: 4.20.2007

JOB No: 06292-03-00

**ELECTRICAL
PLAN 1
TXYS A, C AND D
(ELP1)**

08

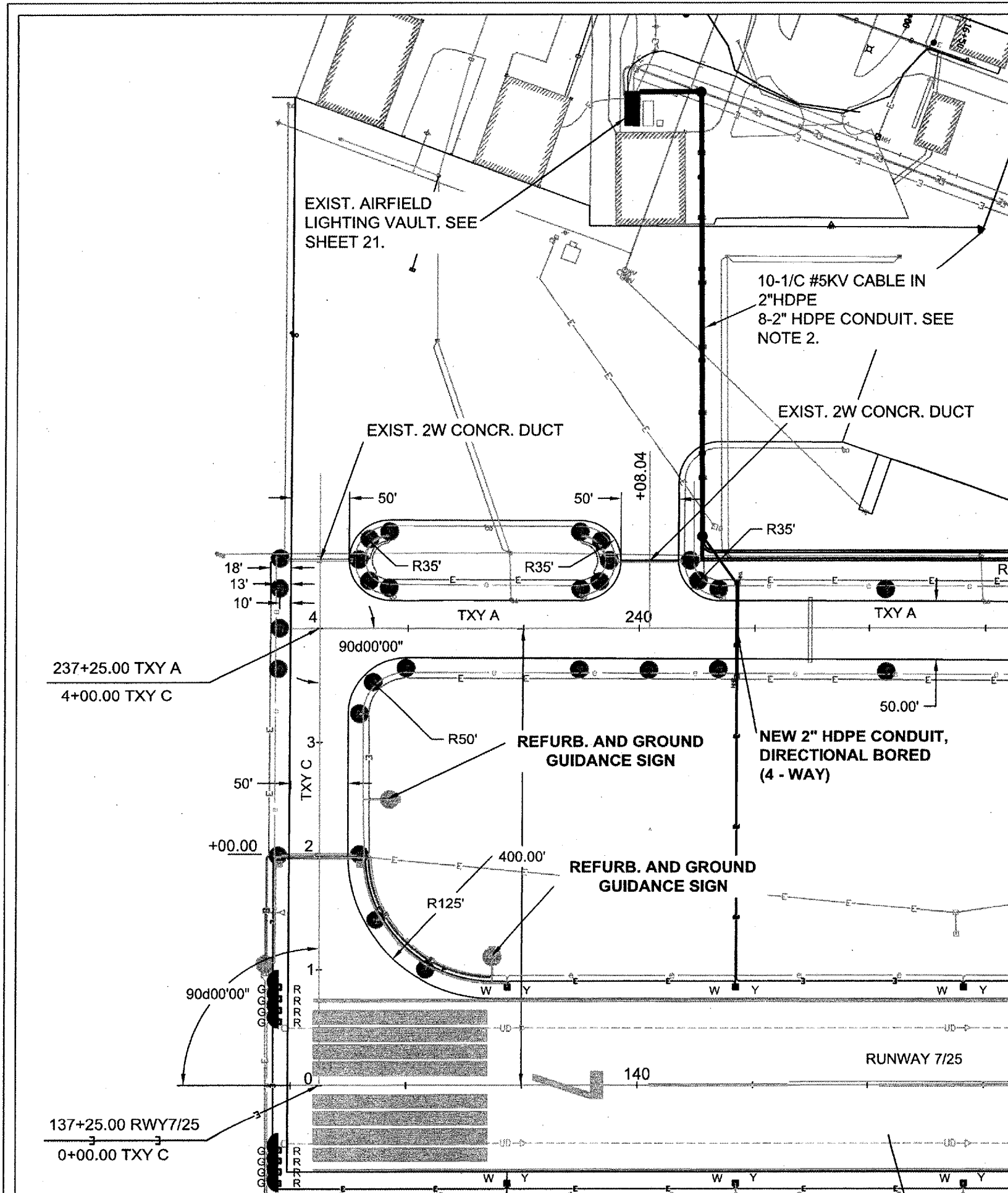
SHEET 08 OF 25 SHEETS

LEGEND

- NEW 1/C 5KV CABLE IN UNIT DUCT
- EXIST. 1/C 5KV CABLE
- NEW ELECTRICAL MANHOLE
- NEW ELECTRICAL HANDHOLE
- NEW DUCT (NO. OF WAYS SHOWN)
- EXIST. DUCT (NO. OF WAYS SHOWN)
- MITL - BASE MOUNTED LIGHT ,
ANCHORED (TYPICAL OF ALL TXY
LIGHTS ONLY)
- EXIST. GUIDANCE TO BE
REFURBISHED AND GROUNDED

NOTE:

1. EXISTING STAKE AND BASE MOUNTED TAXIWAY LIGHTS ARE NOT SHOWN FOR CLARITY. NEW LOCATIONS ARE AT EXISTING LIGHT LOCATIONS.
2. INSTALL 2-1/C #8 5KV (HOMERUN FOR EACH CIRCUIT INCLUDING SPARE) IN EACH 2" CONDUIT. INSTALL PULL STRING IN FUTURE USE CONDUITS.



**ELECTRICAL PLAN 1
TAXIWAYS A, C AND D**