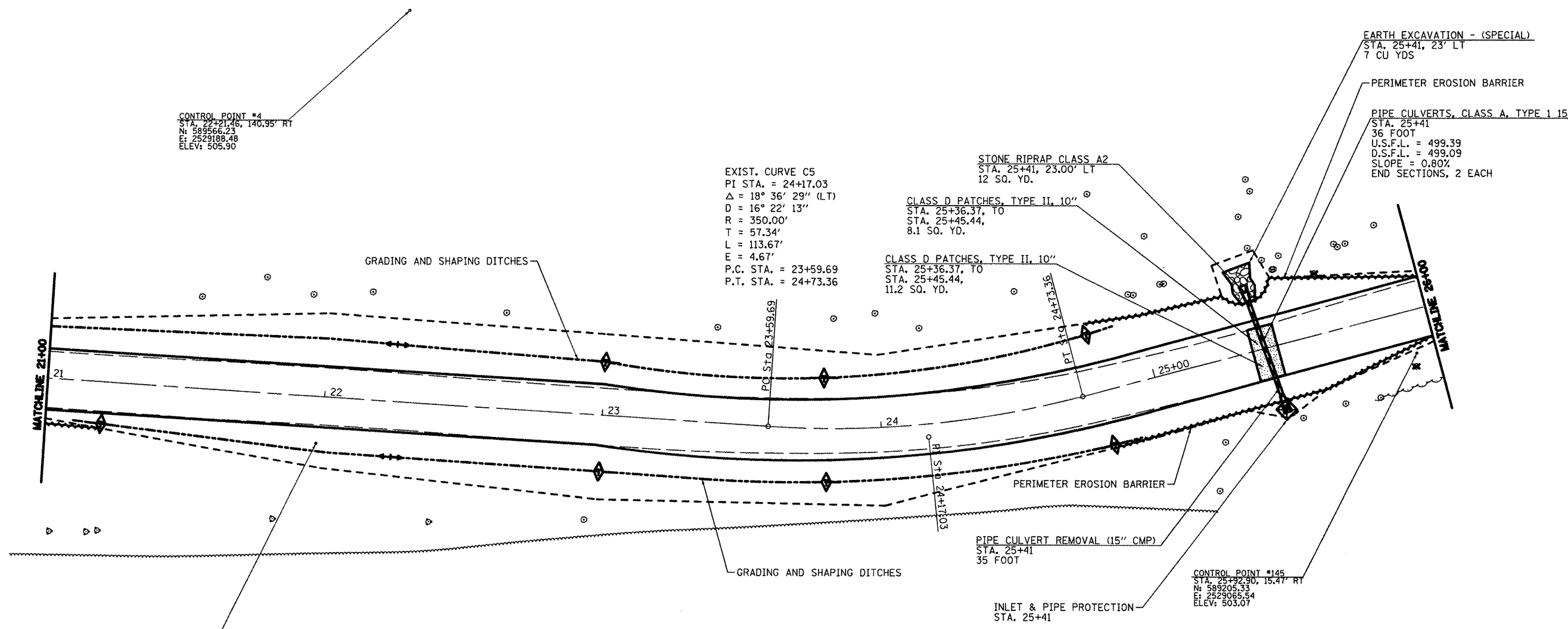


TREE REMOVAL		
STA.	OFFSET	SIZE
25+65 LT	22'	24"
25+91 RT	20'	12"



CONTROL POINT #4
 STA. 22+21.46, 140.95' RT
 N: 589566.23
 E: 2529188.48
 ELEV: 505.90

EXIST. CURVE C5
 PI STA. = 24+17.03
 $\Delta = 18^\circ 36' 29''$ (LT)
 $D = 16^\circ 22' 13''$
 $R = 350.00'$
 $T = 57.34'$
 $L = 113.67'$
 $E = 4.67'$
 P.C. STA. = 23+59.69
 P.T. STA. = 24+73.36

STONE RIPRAP CLASS A2
 STA. 25+41, 23.00' LT
 12 SQ. YD.

CLASS D PATCHES, TYPE II, 10"
 STA. 25+36.37, TO
 STA. 25+45.44,
 8.1 SQ. YD.

CLASS D PATCHES, TYPE II, 10"
 STA. 25+36.37, TO
 STA. 25+45.44,
 11.2 SQ. YD.

EARTH EXCAVATION - (SPECIAL)
 STA. 25+41, 23' LT
 7 CU YDS

PERIMETER EROSION BARRIER

PIPE CULVERTS, CLASS A, TYPE 1 15"
 STA. 25+41
 36 FOOT
 U.S.F.L. = 499.39
 D.S.F.L. = 499.09
 SLOPE = 0.80%
 END SECTIONS, 2 EACH

CONTROL POINT #143
 STA. 21+17.88, 16.95' RT
 N: 589600.04
 E: 2529032.45
 ELEV: 505.82

CONTROL POINT #145
 STA. 25+22.90, 15.47' RT
 N: 589205.33
 E: 2529065.54
 ELEV: 503.07

TEMPORARY DITCH CHECKS	
STA.	L.F.
RT 21+20	6
LT 23+00	6
RT 23+00	6
LT 23+80	6
RT 23+80	6
LT 24+80	6
RT 24+80	6

GRADING AND SHAPING DITCHES	
STA.	L.F.
LT 21+00 - LT 24+90	390
RT 21+10 - RT 24+90	380

PERIMETER EROSION BARRIER	
STA.	L.F.
RT 21+00 - RT 21+20	20
LT 24+80 - LT 26+00	120
RT 24+80 - RT 26+00	120

- TEMPORARY DITCH CHECK
- INLET AND PIPE PROTECTION
- PROPOSED RIPRAP
- PAVEMENT PATCHING
- PERIMETER EROSION CONTROL

FILE NAME = #FILE#	USER NAME = GUBEN	DESIGNED - R.H.D.	REVISED -	STATE OF ILLINOIS DEPARTMENT OF TRANSPORTATION	WASHINGTON COUNTY CONSERVATION AREA MAIN ALIGNMENT		SCALE: 1" = 20'	SHEET NO. 19 OF 112 SHEETS	STA. 21+00 TO STA. 26+00	F.A. RTE.	SECTION	COUNTY	TOTAL SHEETS	SHEET NO.
	PLOT SCALE = @SCALE@	CHECKED - R.H.D.	REVISED -		WASHINGTON	112					19			
PLOT DATE = @DATE@	DATE - 4/4/12	REVISED -									CONTRACT NO. 46223			

JOB NO. 250-061-W VASCONCELLES ENGINEERING CORP. DESIGN FIRM REGISTRATION NUMBER 184-002107