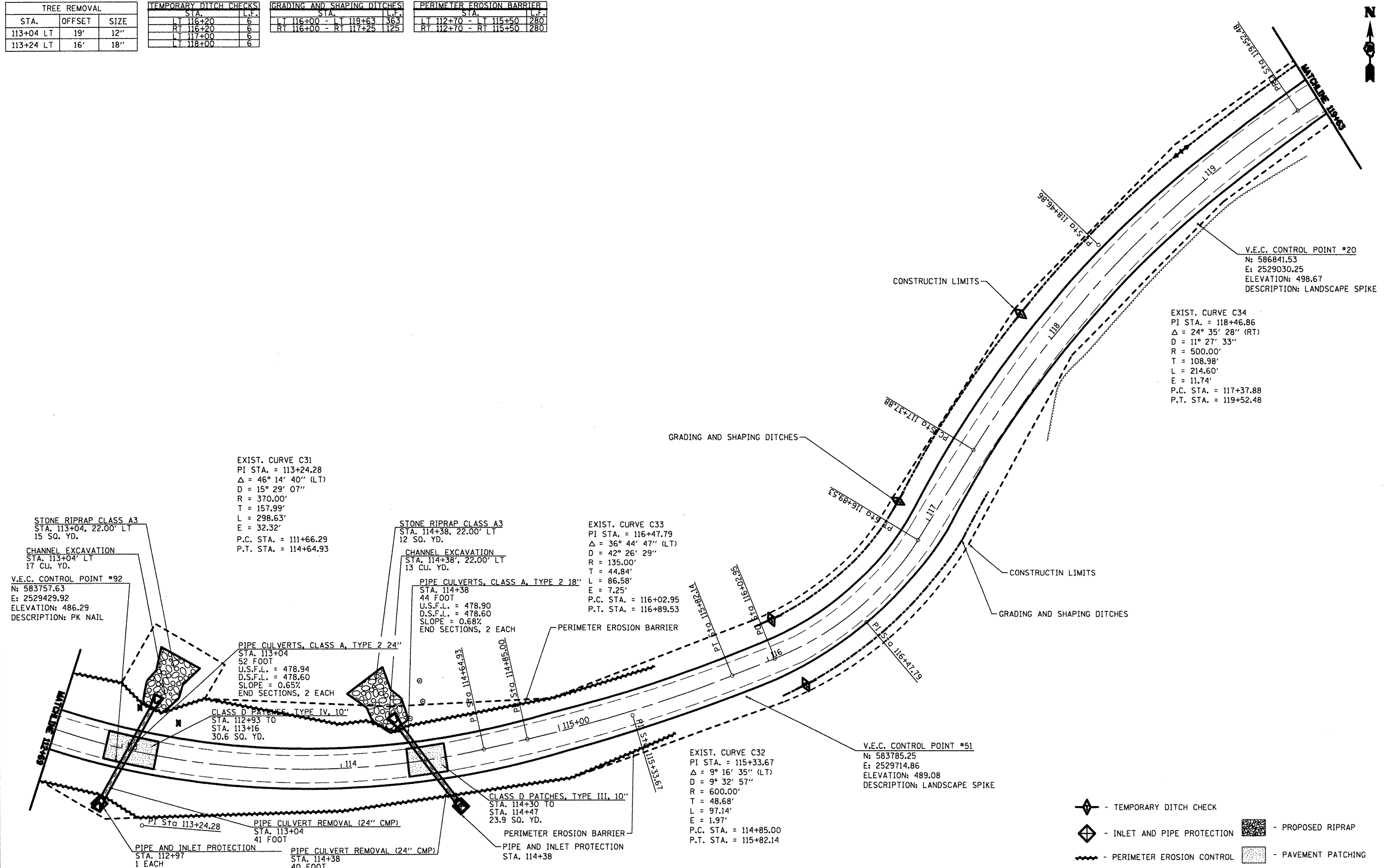


TREE REMOVAL		
STA.	OFFSET	SIZE
113+04 LT	19'	12"
113+24 LT	16'	18"

TEMPORARY DITCH CHECKS	
STA.	LT.
116+20	6
116+20	6
117+00	6
118+00	6

GRADING AND SHAPING DITCHES		
STA.	LT.	LT.
116+00	119+63	363
116+00	117+25	125

PERIMETER EROSION BARRIER		
STA.	LT.	LT.
112+70	115+50	280
112+70	115+50	280



FILE NAME =	USER NAME = #USER#	DESIGNED - R.J.D.	REVISED -
#FILE#		DRAWN - J.T.T.	REVISED -
	PLOT SCALE = #SCALE#	CHECKED - R.J.D.	REVISED -
	PLOT DATE = #DATE#	DATE - 4/4/12	REVISED -

STATE OF ILLINOIS
DEPARTMENT OF TRANSPORTATION

WASHINGTON COUNTY CONSERVATION AREA		SCALE: 1" = 20'	SHEET NO. 36 OF 112 SHEETS	STA. 112+69 TO STA. 119+63
MAIN ALIGNMENT				

SECTION	COUNTY	TOTAL SHEETS	SHEET NO.
	WASHINGTON	112	36
CONTRACT NO. 46223			

- TEMPORARY DITCH CHECK
- INLET AND PIPE PROTECTION
- PROPOSED RIPRAP
- PERIMETER EROSION CONTROL
- PAVEMENT PATCHING

JOB NO. 250-061-W VASCONCELLES ENGINEERING CORP. DESIGN FROM REGISTRATION NUMBER 184-00207