

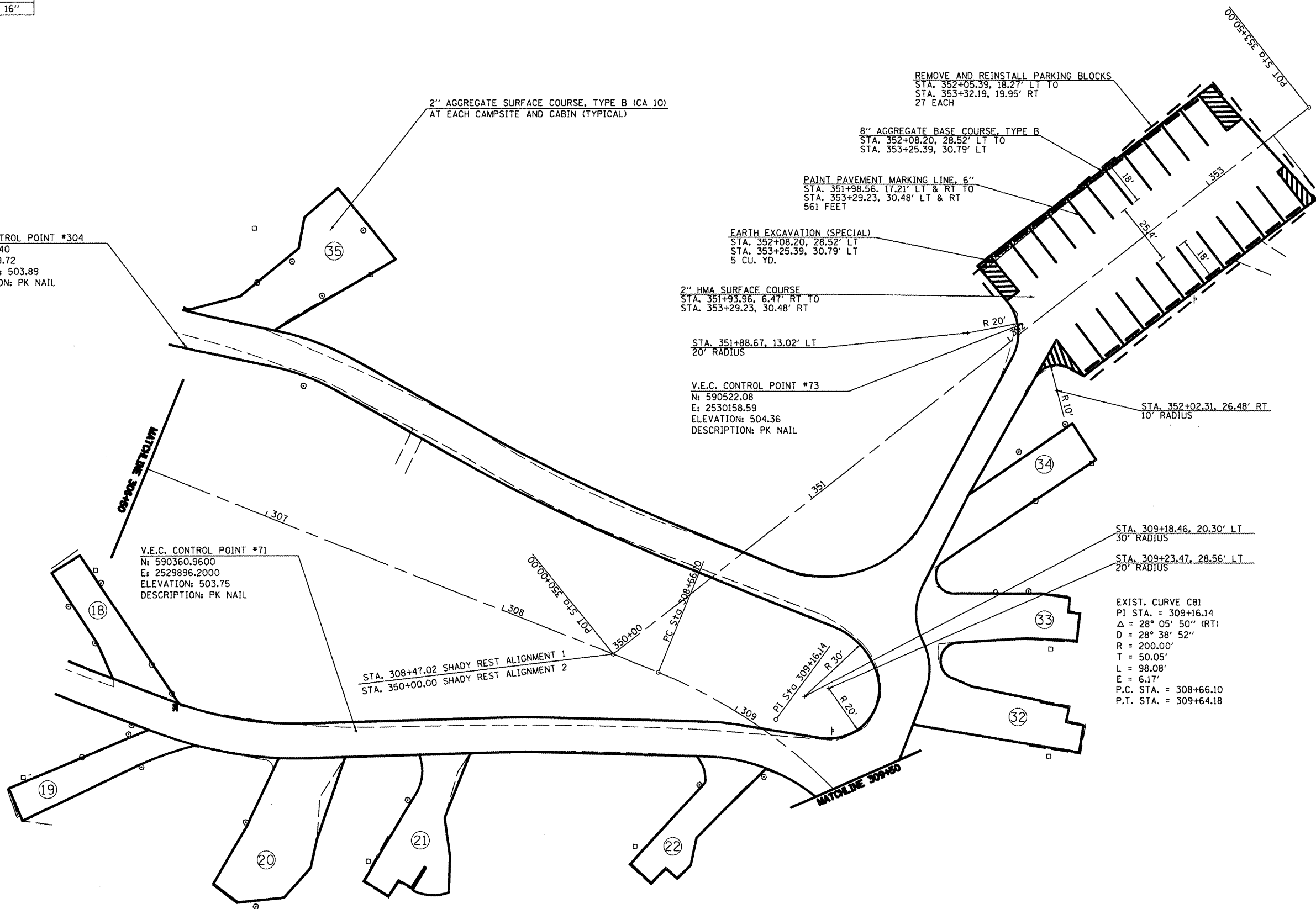
TREE REMOVAL		
STA.	OFFSET	SIZE
306+96 RT	83.75'	16"



V.E.C. CONTROL POINT #304
 N: 590513.40
 E: 2529829.72
 ELEVATION: 503.89
 DESCRIPTION: PK NAIL

V.E.C. CONTROL POINT #71
 N: 590360.9600
 E: 2529896.2000
 ELEVATION: 503.75
 DESCRIPTION: PK NAIL

V.E.C. CONTROL POINT #73
 N: 590522.08
 E: 2530158.59
 ELEVATION: 504.36
 DESCRIPTION: PK NAIL



EXIST. CURVE C81
 PI STA. = 309+16.14
 Δ = 28° 05' 50" (RT)
 D = 28° 38' 52"
 R = 200.00'
 T = 50.05'
 L = 98.08'
 E = 6.17'
 P.C. STA. = 308+66.10
 P.T. STA. = 309+64.18

- EARTH EXCAVATION (SPECIAL)

FILE NAME =
 #FILE#

USER NAME = #USER#
 PLOT SCALE = #SCALE#
 PLOT DATE = #DATE#

DESIGNED - R.H.D.
 DRAWN - J.T.T.
 CHECKED - R.H.D.
 DATE - 4/4/12

REVISED -
 REVISED -
 REVISED -
 REVISED -

STATE OF ILLINOIS
 DEPARTMENT OF TRANSPORTATION

WASHINGTON COUNTY CONSERVATION AREA
 SHADY REST ALIGNMENT 1 / SHADY REST ALIGNMENT 2
 SCALE: 1" = 20' SHEET NO. 62 OF 112 SHEETS STA. 306+50 TO STA. 309+50

ROUTE	SECTION	COUNTY	TOTAL SHEETS	SHEET NO.
		WASHINGTON	112	62
CONTRACT NO. 46223			ILLINOIS FED. AID PROJECT	

JOB NO. 250-061-B VASCONCELLES ENGINEERING CORP. DESIGN FIRM REGISTRATION NUMBER 184-000207