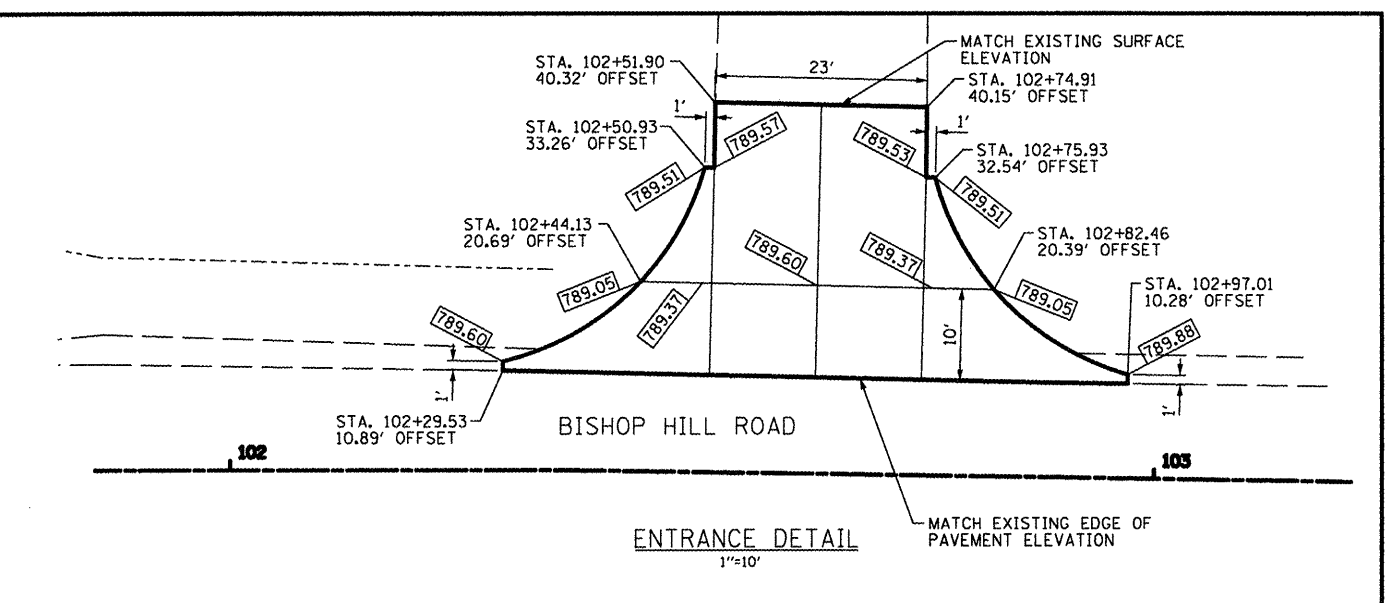
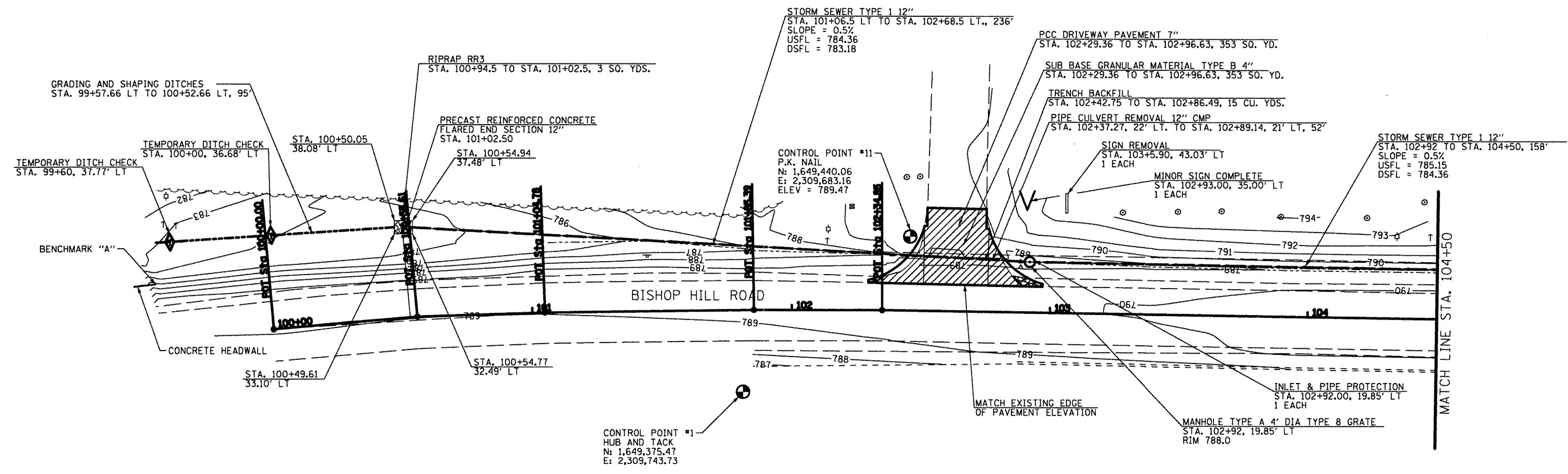




- PAVEMENT REMOVAL
- AGGREGATE SHOULDER REMOVAL



BASELINE COORDINATES

STA. 100+00	N: 1,649,194.53	E: 2,309,719.68
STA. 100+55.61	N: 1,649,249.92	E: 2,309,714.75
STA. 101+04.78	N: 1,649,299.06	E: 2,309,713.13
STA. 101+85.39	N: 1,649,379.67	E: 2,309,712.03
STA. 102+34.85	N: 1,649,429.13	E: 2,309,712.00
STA. 104+00.00	N: 1,649,594.26	E: 2,309,714.52

BENCHMARK "A" NORTHWEST CORNER OF CONCRETE HEADWALL LOCATED AT STA. 99+56
ASSUMED ELEV = 786.41

FILE NAME =	USER NAME = #USER#	DESIGNED - R.H.D.	REVISED -	STATE OF ILLINOIS DEPARTMENT OF TRANSPORTATION	PLAN SHEET VISITOR CENTER STA. 100+00 - 104+50 BISHOP HILL STATE HISTORIC SITE	SCALE: 1" = 20'	SHEET NO. 5 OF 9 SHEETS	STA. 100+00 TO STA. 104+50
*FILE#		DRAWN - S.D.K.	REVISED -					
	PLOT SCALE = #SCALE#	CHECKED - R.H.D.	REVISED -					
	PLOT DATE = #DATE#	DATE - 2/26/12	REVISED -					
						SECTION	COUNTY	TOTAL SHEETS
						VARIOUS	HENRY	9 5
						CONTRACT NO. 46224		
						ILLINOIS FED. AID PROJECT		

JOB NO. 250-063-U VASCONCELLES ENGINEERING CORP. DESIGN FIRM REGISTRATION NUMBER 184-002107