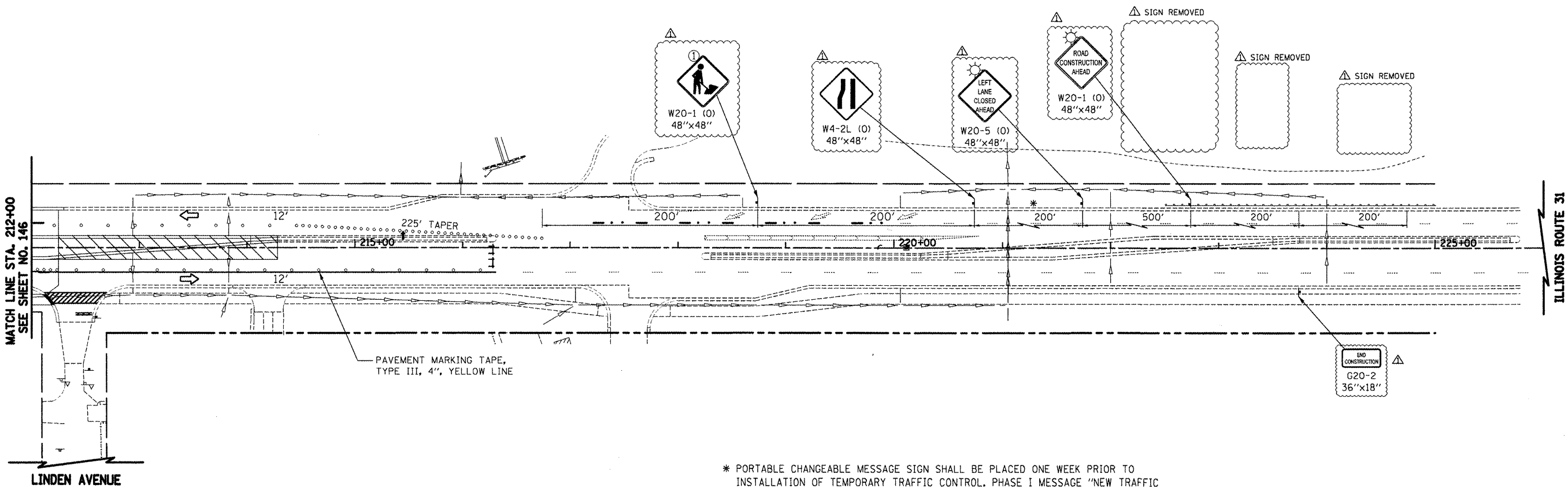


LEGEND

	TEMPORARY PAVEMENT		DRUM WITH STEADY BURN BI-DIRECTIONAL LIGHT
	CONSTRUCTION WORK ZONE		TYPE I OR II BARRICADE WITH FLASHING LIGHTS
	DIRECTION OF TRAFFIC FLOW		DOUBLE VERTICAL PANEL WITH STEADY BURN BI-DIRECTIONAL LIGHT
	ARROW BOARD		TYPE III BARRICADE WITH FLASHING LIGHTS
			FLASHING MONO-DIRECTIONAL LIGHT



* PORTABLE CHANGEABLE MESSAGE SIGN SHALL BE PLACED ONE WEEK PRIOR TO INSTALLATION OF TEMPORARY TRAFFIC CONTROL. PHASE I MESSAGE "NEW TRAFFIC PATTERN" AND PHASE 2 "STARTS XX/XX/XXXX", OR AS DIRECTED BY ENGINEER.

① MUST BE REMOVED WHEN WORKERS ARE NOT PRESENT



ILLINOIS ROUTE 31

ADDENDUM REV. 5/21/2012 JES

FILE NAME = ...\\08-MOT\DI60F72-shr-MOT-45.dgn	USER NAME = oth	DESIGNED - KWH	REVISED - 5/21/2012	STATE OF ILLINOIS DEPARTMENT OF TRANSPORTATION	MAINTENANCE OF TRAFFIC -- STAGE 4C				O.R. RTE.	SECTION	COUNTY	TOTAL SHEETS	SHEET NO.
		DRAWN - AKW	REVISED -						0003	18A-2	MCHENRY	825	147
	PLOT SCALE = 100.0000' / 1 in.	CHECKED - GAB	REVISED -						CONTRACT NO. 60F72				
	PLOT DATE = 5/24/2012	DATE - 5/3/2012	REVISED -						FED. ROAD DIST. NO. 1 ILLINOIS FED. AID PROJECT				
				SCALE: 1" = 50'	SHEET NO. 45 OF 47 SHEETS	STA. 212+00 TO STA. 226+00							