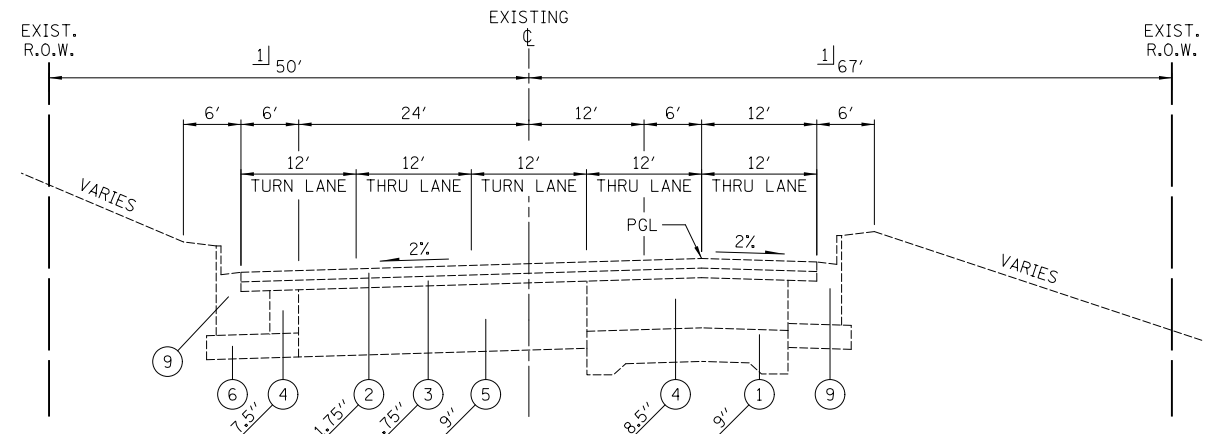
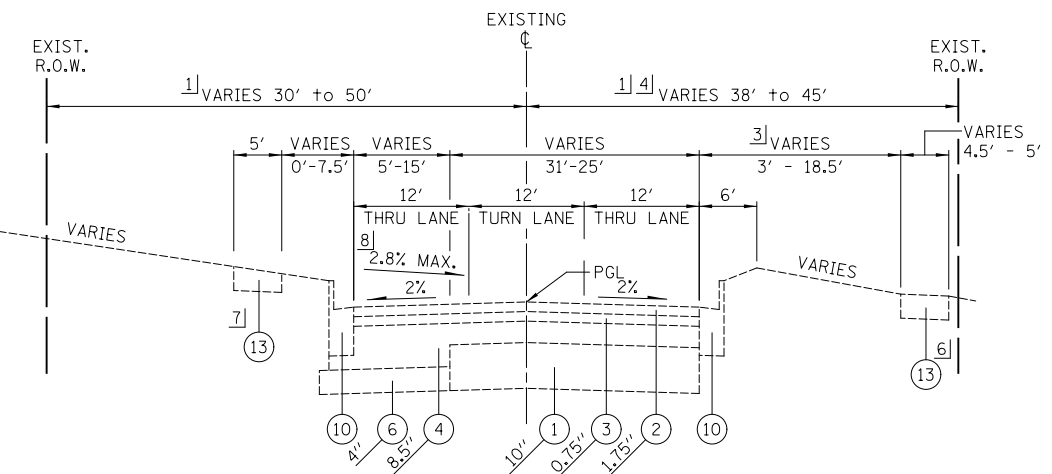


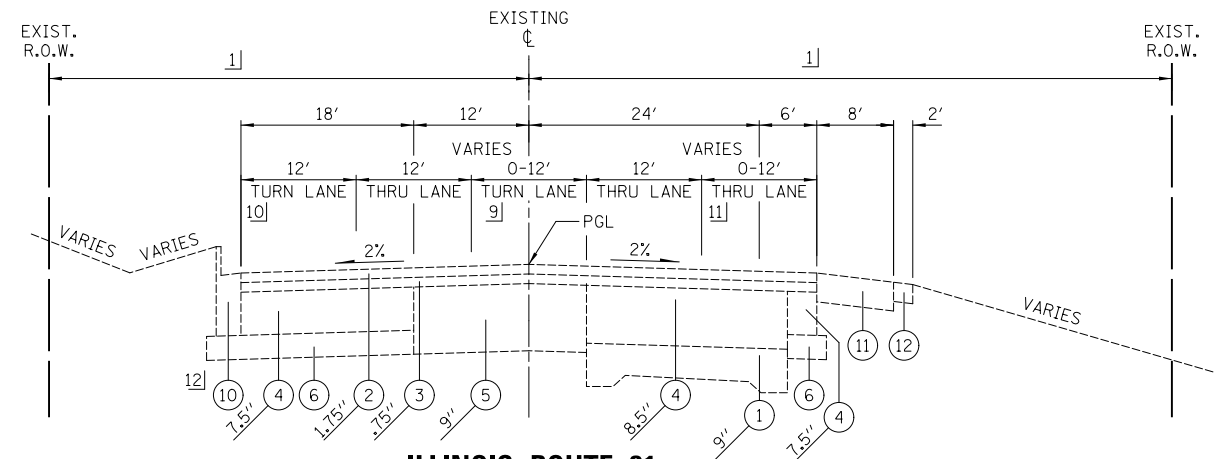
**ILLINOIS ROUTE 31**  
 STA. 87+35 TO STA. 94+25  
 STA. 108+30 TO STA. 112+50



**ILLINOIS ROUTE 31/NORTH MAIN ST**  
 STA. 188+88.36 TO STA. 190+50



**ILLINOIS ROUTE 31**  
 STA. 94+25 TO STA. 108+30  
 STA. 112+50 TO STA. 114+22.83



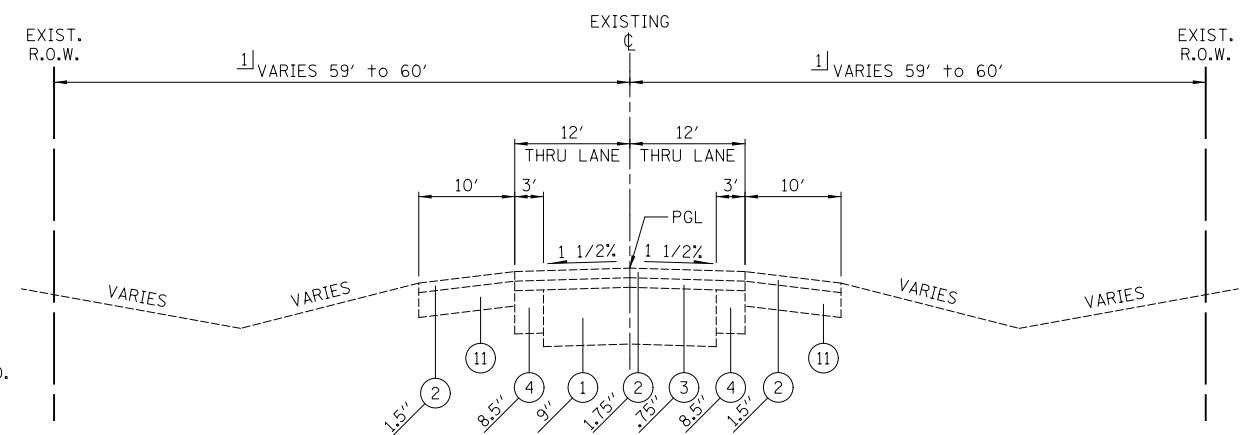
**ILLINOIS ROUTE 31**  
 STA. 190+50 TO STA. 199+28

**LEGEND**

- 1 EXISTING P.C. CONCRETE PAVEMENT, 5" AND VARIES
- 2 EXISTING HOT-MIX ASPHALT SURFACE COURSE, THICKNESS VARIES .75" TO 4"
- 3 EXISTING HOT-MIX ASPHALT BINDER COURSE, THICKNESS VARIES .75" TO 6.25"
- 4 EXISTING HOT-MIX ASPHALT BASE COURSE, THICKNESS VARIES 5" TO 13.5"
- 5 EXISTING P.C. CONCRETE BASE COURSE, VARIES 9" TO 10"
- 6 EXISTING SUB-BASE GRANULAR MATERIAL, THICKNESS VARIES 4" TO 16"
- 7 EXISTING COMBINATION CURB AND GUTTER, TYPE B-6.12
- 8 EXISTING COMBINATION CURB AND GUTTER, TYPE B-6.18
- 9 EXISTING COMBINATION CURB AND GUTTER, TYPE B-6.18 SPECIAL
- 10 EXISTING COMBINATION CURB AND GUTTER, TYPE B-6.24
- 11 EXISTING HOT-MIX ASPHALT SHOULDER
- 12 EXISTING AGGREGATE SHOULDER
- 13 EXISTING CONCRETE SIDEWALK
- 14 EXISTING RETAINING WALL
- 15 NO. 6 TIE BAR AT 24" ON CENTER
- 16 NO. 8 TIE BAR
- 17 EXISTING STEEL PLATE BEAM GUARDRAIL
- 18 EXISTING WOOD BOLLARD

**SHEET NOTES**

- STATIONING FROM EXISTING ALIGNMENTS
- 1] SEE SHEETS 410 - 457 FOR RIGHT OF WAY DIMENSIONS.
  - 2] 18.5' TO 17' FROM STA. 98+35 TO STA. 99+60  
14.5' TO 2.5' FROM STA. 102+35 TO STA. 108+30
  - 3] 45' TO 38' FROM STA. 94+25 TO STA. 98+35  
38' TO 40' FROM STA. 98+35 TO STA. 108+30
  - 4] FROM STA. 98+35 TO STA. 99+60  
AND STA. 102+35 TO STA. 108+30
  - 5] FROM STA. 107+15 TO STA. 109+00
  - 6] FROM STA. 94+25 TO STA. 98+35
  - 7] STRIPED AS TURN LANE TO STA. 191+20.  
STRIPED AS MEDIAN AND VARIES  
FROM 12' TO 0' FROM STA. 191+20 TO STA. 194+50
  - 8] STRIPED AS TURN LANE FROM STA. 194+50 TO STA. 197+60.  
STRIPED AS SHOULDER AND VARIES  
FROM 0' TO 12' FROM STA. 197+60 TO STA. 199+28
  - 9] VARIES FROM 12' TO 0' FROM STA. 196+00 TO STA. 199+28
  - 10] CURB ENDS AT STA. 195+62



**ILLINOIS ROUTE 31**  
 STA. 199+28 TO STA. 221+96.36

FILE NAME =	USER NAME = ctb	DESIGNED - PML	REVISED -
...\\D160F72-sht-typical-01.dgn		DRAWN - PML	REVISED -
	PLOT SCALE = 2.0000' / in.	CHECKED - GAB	REVISED -
	PLOT DATE = 5/2/2012	DATE - 5/3/2012	REVISED -

**STATE OF ILLINOIS  
 DEPARTMENT OF TRANSPORTATION**

**EXISTING TYPICAL SECTIONS**

SCALE: N.T.S. SHEET NO. 1 OF 15 SHEETS STA. TO STA.

O.R. RTE.	SECTION	COUNTY	TOTAL SHEETS	SHEET NO.
0003	18A-2	MCHENRY	825	24
CONTRACT NO. 60F72				
FED. ROAD DIST. NO. 1 ILLINOIS FED. AID PROJECT				