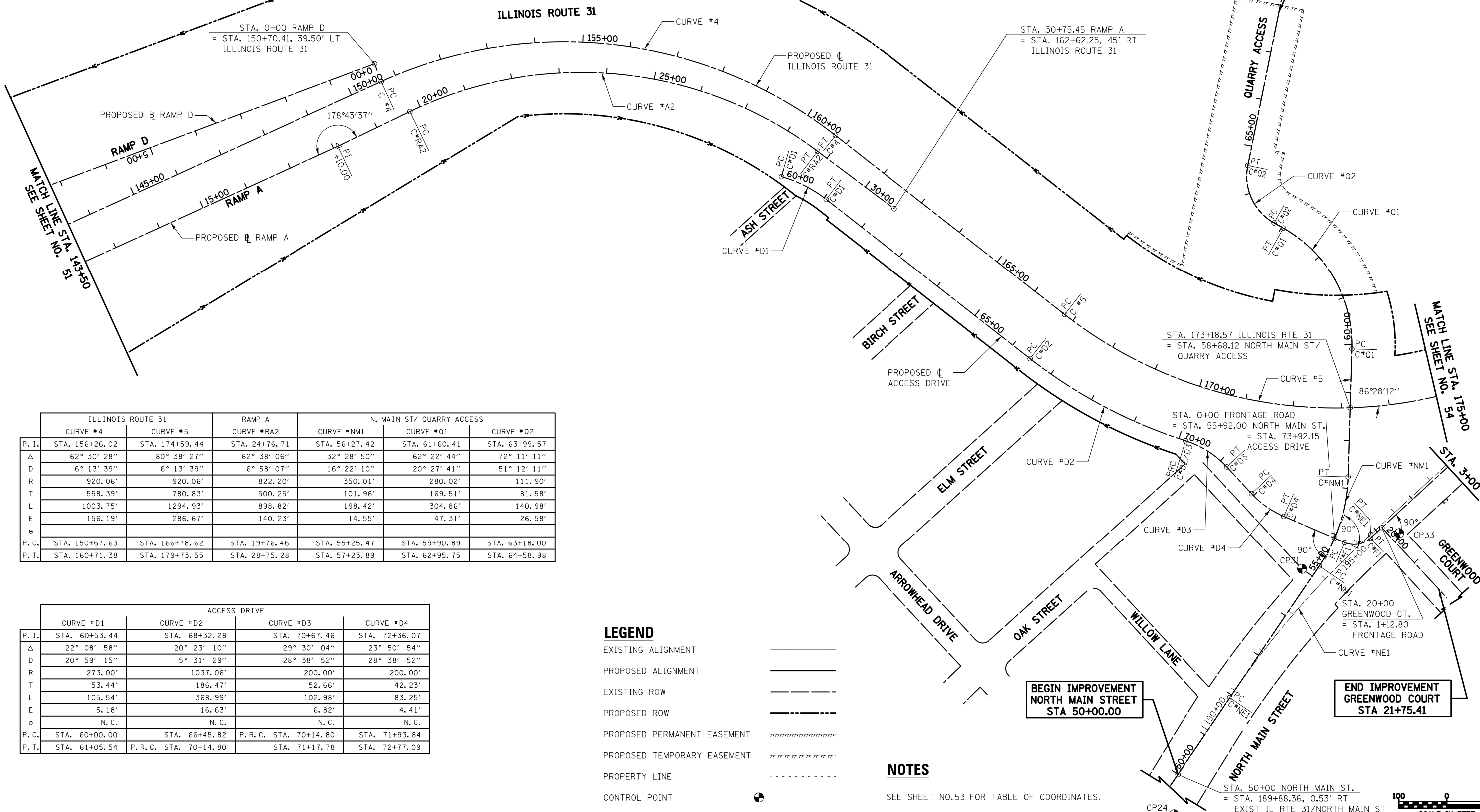
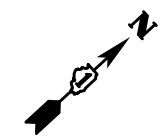


NOTES

COORDINATES ARE BASED ON THE PUBLISHED METRIC COORDINATE VALUES AT FOUND GEODETIC SURVEY CONTROL MONUMENT "MCH31 1A", P.I.D. AJ2855, OF N.613,205.182-E.303,895.917. SURFACE COORDINATES ARE SHOWN IN U.S. SURVEY FEET. ELEVATIONS ARE ON NAVD 88 DATUM.

REFER TO THE PLAT OF HIGHWAYS, SHEET 410 -457 FOR ROW AND EASEMENT LOCATIONS.

CONTROL POINTS							
POINT ID	ALIGNMENT	STATION	OFFSET	NORTHING	EASTING	ELEVATION	DESCRIPTION
CP24	N MAIN ST	49+26.82	40.18	2,006,384.68	997,103.67	867.74	5/8" IR W/CAP SET
CP31	N MAIN ST	55+00.61	-26.24	2,006,927.83	996,907.09	876.56	X-CUT IN CURB SET
CP33	FRONTAGE RD	1+31.59	32.73	2,007,127.24	996,988.68	877.45	MAG NAIL SET



P. I.	ILLINOIS ROUTE 31		RAMP A		N. MAIN ST/ QUARRY ACCESS	
	CURVE #4	CURVE #5	CURVE #RA2	CURVE #NM1	CURVE #Q1	CURVE #Q2
Δ	62° 30' 28"	80° 38' 27"	62° 38' 06"	32° 28' 50"	62° 22' 44"	72° 11' 11"
D	6° 13' 39"	6° 13' 39"	6° 58' 07"	16° 22' 10"	20° 27' 41"	51° 12' 11"
R	920.06'	920.06'	822.20'	350.01'	280.02'	111.90'
T	558.39'	780.83'	500.25'	101.96'	169.51'	81.58'
L	1003.75'	1294.93'	898.82'	198.42'	304.86'	140.98'
E	156.19'	286.67'	140.23'	14.55'	47.31'	26.58'
e						
P. C.	STA. 150+67.63	STA. 166+78.62	STA. 19+76.46	STA. 55+25.47	STA. 59+90.89	STA. 63+18.00
P. T.	STA. 160+71.38	STA. 179+73.55	STA. 28+75.28	STA. 57+23.89	STA. 62+95.75	STA. 64+58.98

P. I.	ACCESS DRIVE			
	CURVE #D1	CURVE #D2	CURVE #D3	CURVE #D4
Δ	22° 08' 58"	20° 23' 10"	29° 30' 04"	23° 50' 54"
D	20° 59' 15"	5° 31' 29"	28° 38' 52"	28° 38' 52"
R	273.00'	1037.06'	200.00'	200.00'
T	53.44'	186.47'	52.66'	42.23'
L	105.54'	368.99'	102.98'	83.25'
E	5.18'	16.63'	6.82'	4.41'
e	N. C.	N. C.	N. C.	N. C.
P. C.	STA. 60+00.00	STA. 66+45.82	P. R. C. STA. 70+14.80	STA. 71+93.84
P. T.	STA. 61+05.54	P. R. C. STA. 70+14.80	STA. 71+17.78	STA. 72+77.09

LEGEND

- EXISTING ALIGNMENT
- PROPOSED ALIGNMENT
- EXISTING ROW
- PROPOSED ROW
- PROPOSED PERMANENT EASEMENT
- PROPOSED TEMPORARY EASEMENT
- PROPERTY LINE
- CONTROL POINT

NOTES

SEE SHEET NO.53 FOR TABLE OF COORDINATES.



FILE NAME =	USER NAME = ctb	DESIGNED - PML	REVISED -
...\\D160F72-sht-ATB-03.dgn		DRAWN - AKW	REVISED -
	PLOT SCALE = 200.0000' / in.	CHECKED - PML	REVISED -
	PLOT DATE = 5/2/2012	DATE - 5/3/2012	REVISED -

**STATE OF ILLINOIS
DEPARTMENT OF TRANSPORTATION**

ALIGNMENT, TIES & BENCHMARKS

SCALE: 1" = 100' SHEET NO. 3 OF 7 SHEETS STA. 143+50.00 TO STA. 175+00.00

O.R. RTE.	SECTION	COUNTY	TOTAL SHEETS	SHEET NO.
0003	18A-2	MCHENRY	825	52
				CONTRACT NO. 60F72
FED. ROAD DIST. NO. 1 ILLINOIS FED. AID PROJECT				