

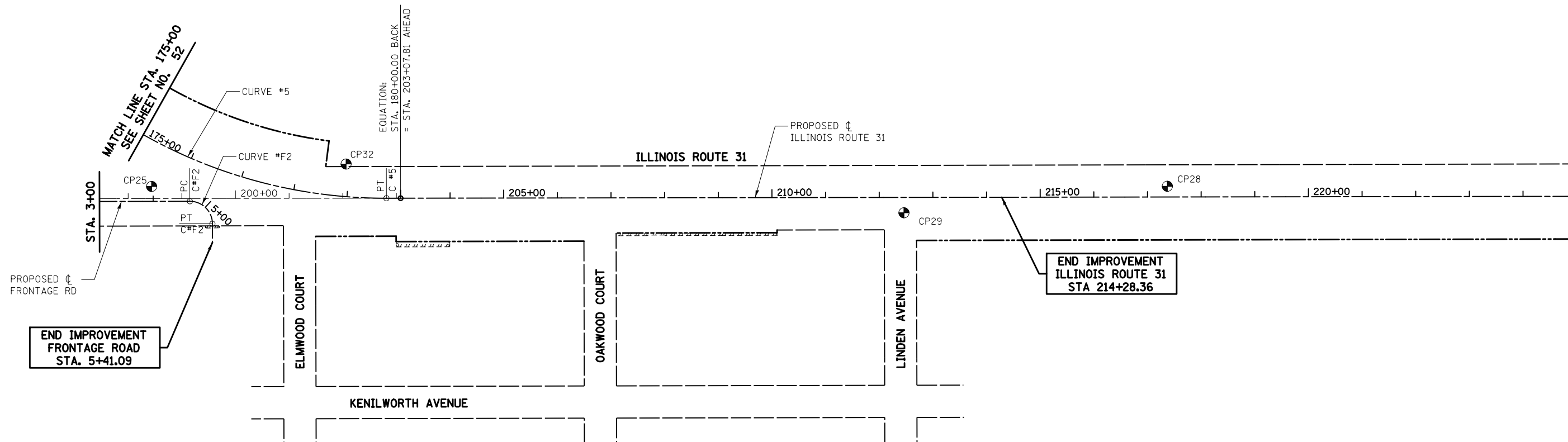
LEGEND

- EXISTING ALIGNMENT
- PROPOSED ALIGNMENT
- EXISTING ROW
- PROPOSED ROW
- PROPOSED PERMANENT EASEMENT
- PROPOSED TEMPORARY EASEMENT
- PROPERTY LINE
- CONTROL POINT +

NOTES

COORDINATES ARE BASED ON THE PUBLISHED METRIC COORDINATE VALUES AT FOUND GEODETIC SURVEY CONTROL MONUMENT "MCH31 1A", P.I.D. AJ2855, OF N.613,205.182-E.303,895.917. SURFACE COORDINATES ARE SHOWN IN U.S. SURVEY FEET. ELEVATIONS ARE ON NAVD 88 DATUM.

REFER TO THE PLAT OF HIGHWAYS, SHEET 410 -457 FOR ROW AND EASEMENT LOCATIONS.



	ILLINOIS ROUTE 31 CURVE #5	FRONTAGE ROAD CURVE #F2
P. I.	STA. 174+59.44	STA. 5+10.40
Δ	80° 38' 27"	90° 00' 00"
D	6° 13' 39"	136° 25' 07"
R	920.06'	42.00'
T	780.83'	42.00'
L	1294.93'	65.97'
E	286.67'	17.40'
e		
P. C.	STA. 166+78.62	STA. 4+68.40
P. T.	STA. 179+73.55	STA. 5+34.37

CONTROL POINTS							
POINT ID	ALIGNMENT	STATION	OFFSET	NORTHING	EASTING	ELEVATION	DESCRIPTION
CP25	IL RTE 31	175+56.04	78.34	2,007,392.68	996,927.55	879.07	MAG NAIL SET
CP32	IL RTE 31	178+93.08	-60.62	2,007,755.21	996,885.76	800.00	5/8" IR W/CAP SET
CP29	IL RTE 31	212+46.00	28.65	2,008,795.07	996,976.66	888.29	MAG NAIL SET
CP28	IL RTE 31	217+32.06	-19.98	2,009,286.05	996,927.24	888.03	MAG NAIL SET

ALIGNMENT	STATION	NORTHING	EASTING	DESCRIPTION
ILLINOIS ROUTE 31 - PROP	179+73.55	2,007,830.38	996,949.55	P. T.
ILLINOIS ROUTE 31 - PROP	180+00.00	2,007,856.84	996,949.51	Sta EQ (BK) = Sta 203+07.81 (AH)
ILLINOIS ROUTE 31 - PROP	248+97.36	2,012,446.38	996,942.17	POT
FRONTAGE ROAD	4+68.40	2,007,463.98	996,955.20	P. C.
FRONTAGE ROAD	5+10.40	2,007,505.98	996,955.11	P. I. C#F2
FRONTAGE ROAD	5+34.37	2,007,506.07	996,997.11	P. T.
FRONTAGE ROAD	5+69.26	2,007,506.14	997,032.00	POT
ILLINOIS ROUTE 31 - EXIST	203+07.81	2,007,856.84	996,949.51	POT



FILE NAME =
... \D160F72-sh1-ATB-04.dgn

USER NAME = ctb
PLOT SCALE = 200.0000' / in.
PLOT DATE = 5/2/2012

DESIGNED - PML
DRAWN - AKW
CHECKED - PML
DATE - 5/3/2012

REVISED -
REVISED -
REVISED -
REVISED -

**STATE OF ILLINOIS
DEPARTMENT OF TRANSPORTATION**

ALIGNMENT, TIES & BENCHMARKS

SCALE: 1" = 100' SHEET NO. 5 OF 7 SHEETS STA. 175+00.00 TO STA. 214+28.36

O.R. RTE.	SECTION	COUNTY	TOTAL SHEETS	SHEET NO.
0003	18A-2	MCHENRY	825	54
CONTRACT NO. 60F72				
FED. ROAD DIST. NO. 1 ILLINOIS FED. AID PROJECT				