

REMOVAL LEGEND

- HMA SURFACE REMOVAL, 2 3/4"
- REMOVAL LIMITS
- STRUCTURE TO BE ADJUSTED
- PIPE TO BE REMOVED
- TREE REMOVAL
- SOIL BORING/PAVEMENT CORE

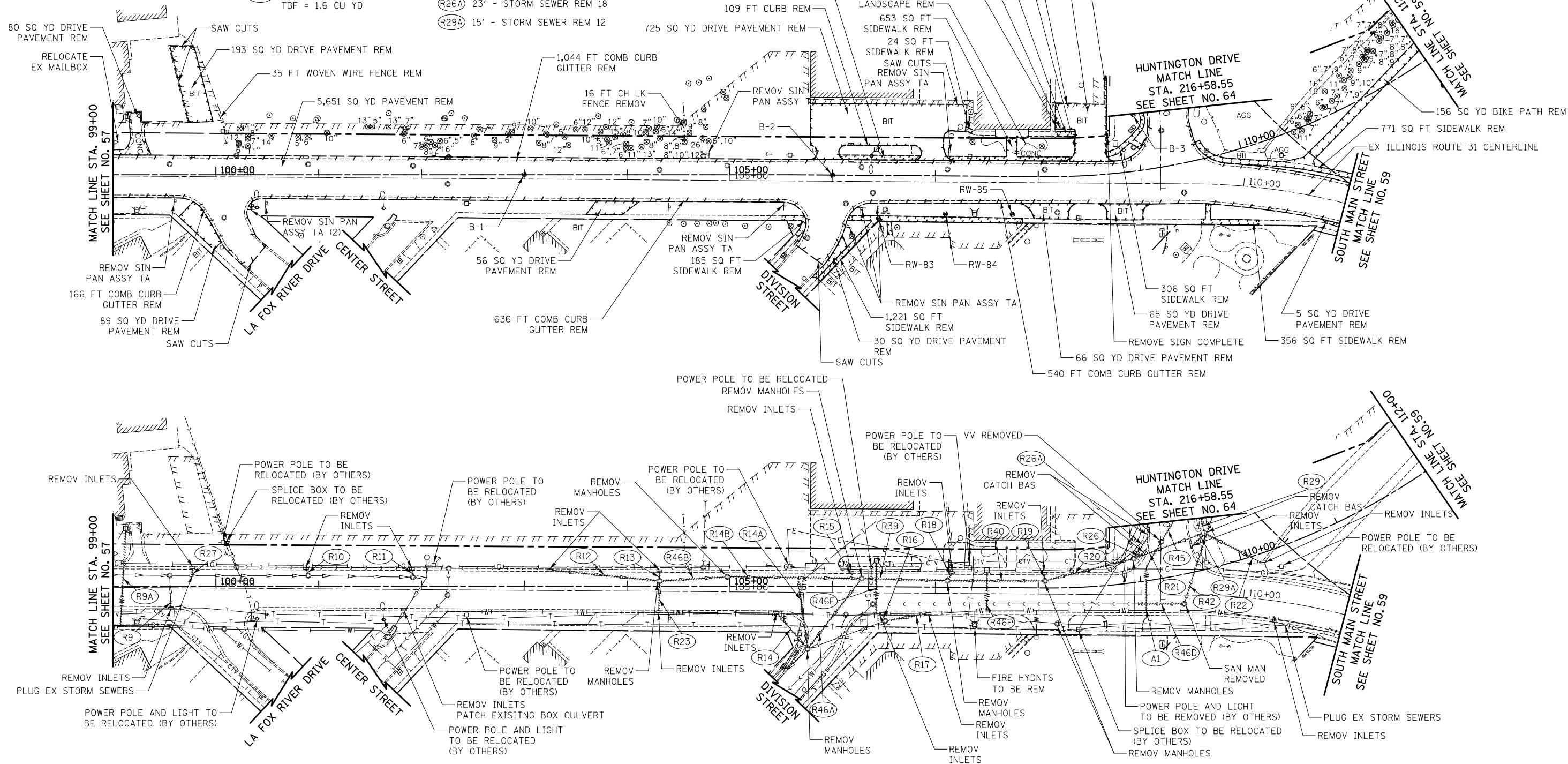
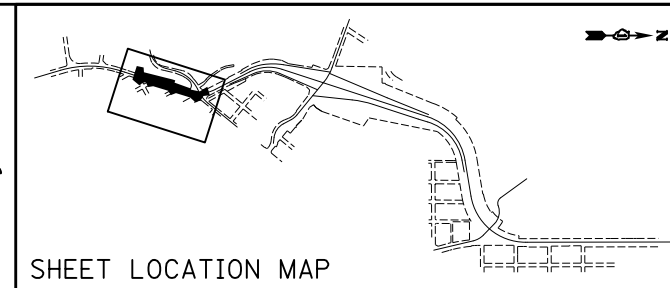
- (R9) 5' - STORM SEWER REM 12 TBF = 0.0 CU YD
- (R10) 5' - STORM SEWER REM 12 TBF = 0.0 CU YD
- (R11) 5' - STORM SEWER REM 12 TBF = 3.9 CU YD
- (R12) 103' - STORM SEWER REM 12 TBF = 0.0 CU YD
- (R13) 7' - STORM SEWER REM 12 TBF = 3.7 CU YD
- (R14) 44' - STORM SEWER REM 12 TBF = 0.0 CU YD
- (R14A) 68' - STORM SEWER REM 12 TBF = 22.0 CU YD
- (R15) 5' - STORM SEWER REM 12 TBF = 1.6 CU YD
- (R9A) 94' - WATER SERVICE REMOVAL TBF = 1.6 CU YD

- (R16) 5' - STORM SEWER REM 12 TBF = 3.7 CU YD
- (R17) 40' - STORM SEWER REM 12 TBF = 15.1 CU YD
- (R18) 6' - STORM SEWER REM 12 TBF = 24.6 CU YD
- (R19) 5' - STORM SEWER REM 12 TBF = 1.5 CU YD
- (R20) 84' - STORM SEWER REM 24 TBF = 32.5 CU YD
- (R21) 68' - STORM SEWER REM 36 TBF = 45.7 CU YD
- (R22) 60' - STORM SEWER REM 15 TBF = 19.1 CU YD
- (R23) 26' - STORM SEWER REM 12 TBF = 0.0 CU YD
- (R26A) 23' - STORM SEWER REM 18
- (R29A) 15' - STORM SEWER REM 12

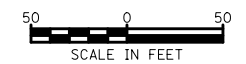
- (R26) 9' - STORM SEWER REM 12 TBF = 0.0 CU YD
- (R27) 7' - STORM SEWER REM 12 TBF = 4.3 CU YD
- (R29) 12' - STORM SEWER REM 30 TBF = 0.0 CU YD
- (R39) 78' - STORM SEWER REM 24 TBF = 0.0 CU YD
- (R40) 91' - STORM SEWER REM 24 TBF = 0.0 CU YD
- (R42) 87' - SAN SEW REMOV 8 TBF = 53.3 CU YD
- (R45) 93' - WATER MAIN REMOV 4 TBF = 53.7 CU YD
- (R46A) 82' - BOX CULVERT REM TBF = 0.0 CU YD

- (R46B) 62' - STORM SEWER REM 18 TBF = 0.0 CU YD
- (R46D) 42' - SAN SEW REMOV 8 TBF = 56.4 CU YD
- (R46E) 50' - WATER SERVICE REMOVAL TBF = 0.0 CU YD

- (R46F) 37' - WATER SERVICE REMOVAL TBF = 0.0 CU YD
- (R14B) 126' - STORM SEWER REM 27 TBF = 0.0 CU YD
- (A1) PLUG EXISTING WATER MAIN



ILLINOIS ROUTE 31



FILE NAME =	USER NAME = ctb	DESIGNED - CTB	REVISED -
... \D160F72-sht-rem-02.dgn		DRAWN - ARA	REVISED -
	PLOT SCALE = 100.0000' / in.	CHECKED - GAB	REVISED -
	PLOT DATE = 5/2/2012	DATE - 5/3/2012	REVISED -

**STATE OF ILLINOIS
DEPARTMENT OF TRANSPORTATION**

REMOVAL PLAN
SCALE: 1" = 50' SHEET NO. 2 OF 13 SHEETS STA. 99+00 TO STA. 112+00

O.R. RTE.	SECTION	COUNTY	TOTAL SHEETS	SHEET NO.
0003	18A-2	MCHENRY	825	58
CONTRACT NO. 60F72				
FED. ROAD DIST. NO. 1 ILLINOIS FED. AID PROJECT				