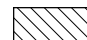
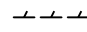
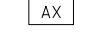



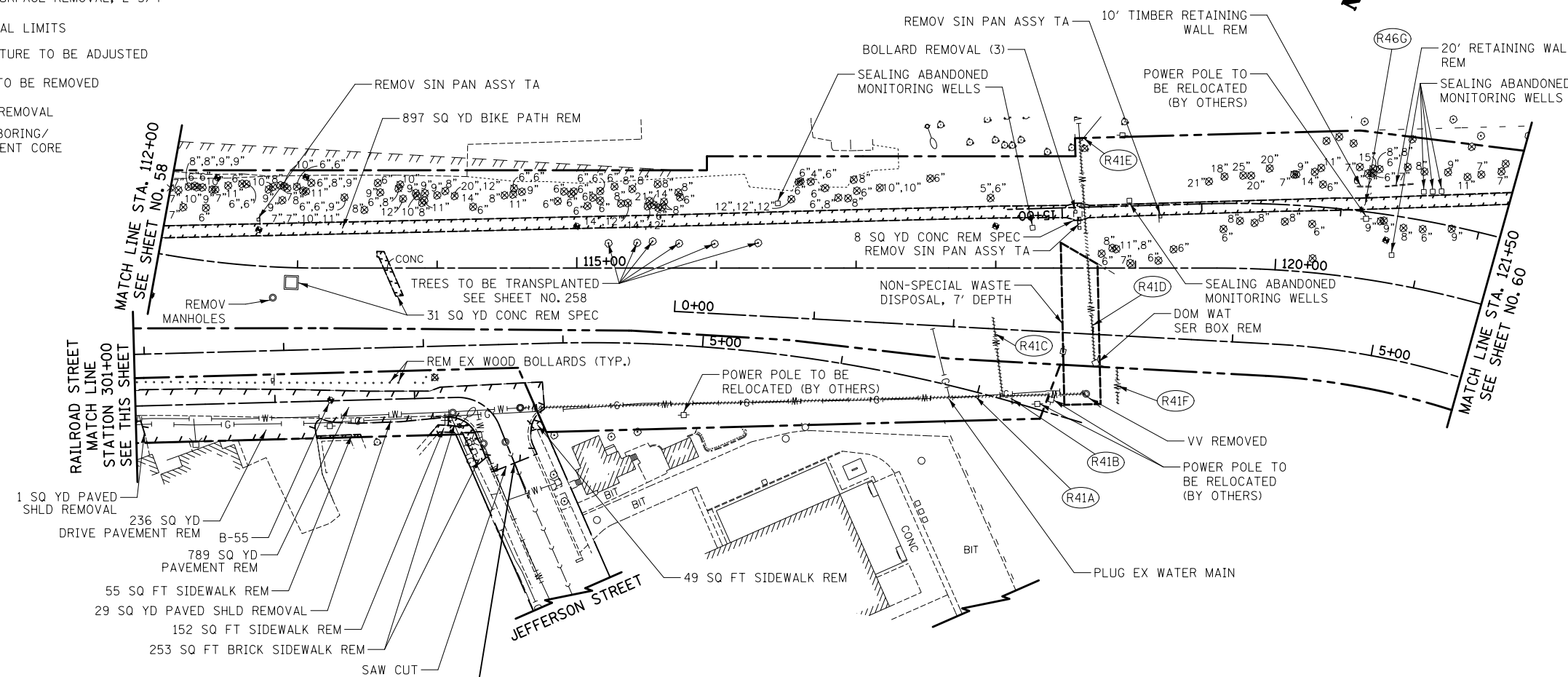
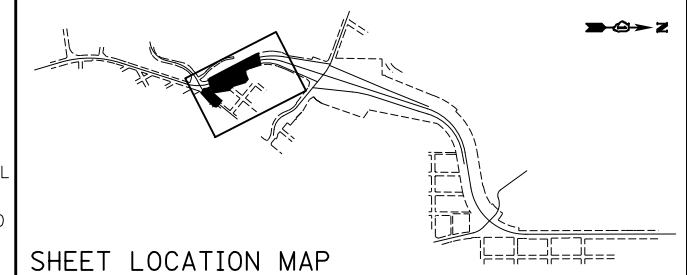


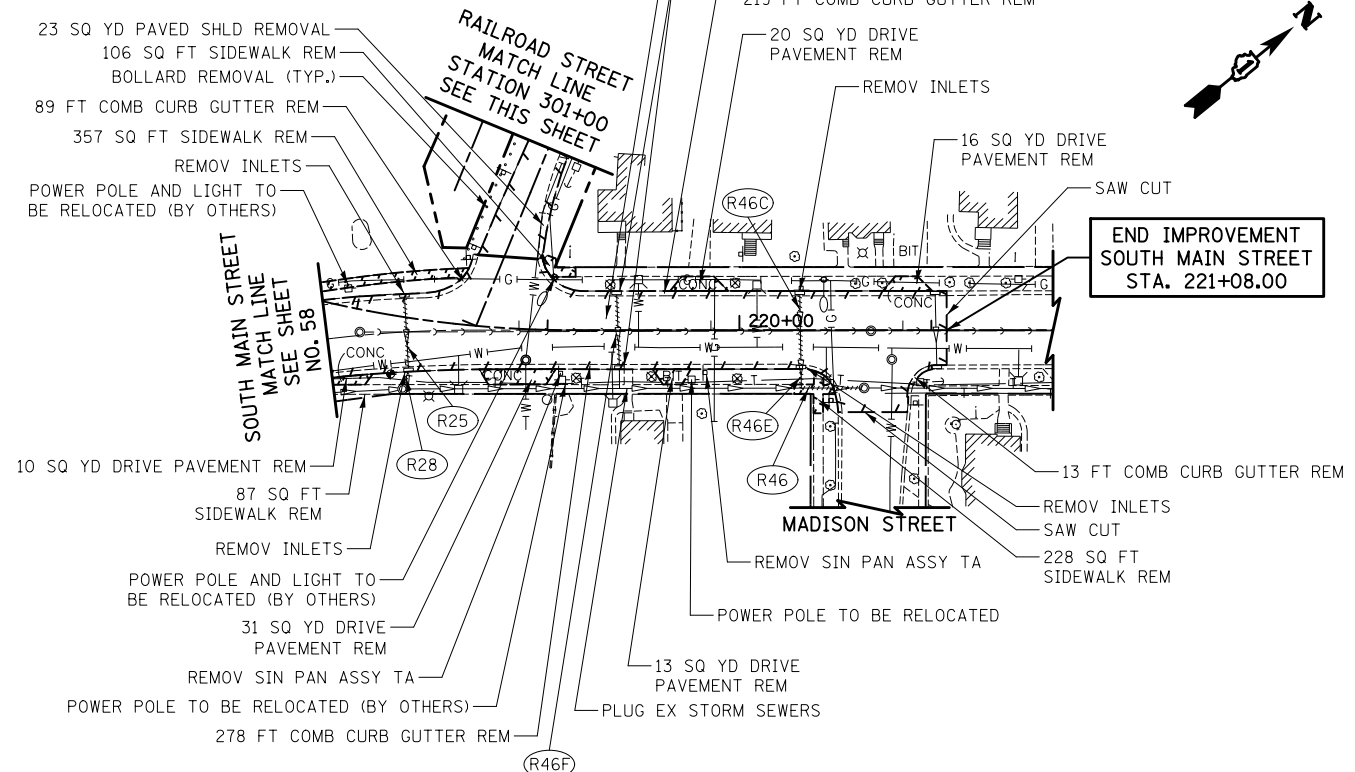
**REMOVAL LEGEND**

-  HMA SURFACE REMOVAL, 2 3/4"
-  REMOVAL LIMITS
-  STRUCTURE TO BE ADJUSTED
-  PIPE TO BE REMOVED
-  TREE REMOVAL
-  SOIL BORING/PAVEMENT CORE



**END IMPROVEMENT  
RAILROAD STREET  
STA. 303+98.02**

**END IMPROVEMENT  
SOUTH MAIN STREET  
STA. 221+08.00**



- (R25) 37' - STORM SEWER REM 12  
TBF = 12.3 CU YD
- (R28) 8' - STORM SEWER REM 12  
TBF = 3.8 CU YD
- (R41A) 96' - WATER MAIN REMOV 8  
TBF = 0.0 CU YD
- (R41B) 6' - WATER MAIN REMOV 8  
TBF = 0.0 CU YD
- (R41C) 56' - WATER MAIN REMOV 4  
TBF = 0.0 CU YD
- (R41D) 160' - WATER SERV REMOVAL  
TBF = 0.0 CU YD
- (R41E) 4' - WATER SERV REMOVAL  
TBF = 0.0 CU YD
- (R46) 30' - STORM SEWER REM 12  
TBF = 0.0 CU YD
- (R46C) 36' - STORM SEWER REM 12  
TBF = 0.0 CU YD
- (R46E) 10' - STORM SEWER REM 12  
TBF = 0.0 CU YD
- (R46F) 36' - STORM SEWER REM 12  
TBF = 0.0 CU YD
- (R41F) 27' - WATER SERV REMOVAL  
TBF = 0.0 CU YD
- (R46G) 18' - PIPE CUL REM 12  
TBF = 0.0 CU YD

**ILLINOIS ROUTE 31  
SOUTH MAIN STREET  
RAILROAD STREET**



|  |                              |                 |           |   |   |                          |                            |                           |               |                |                  |              |
|--|------------------------------|-----------------|-----------|---|---|--------------------------|----------------------------|---------------------------|---------------|----------------|------------------|--------------|
| FILE NAME =<br>...\\D160F72-sht-rem-03.dgn | USER NAME = ctb              | DESIGNED - CTB  | REVISED - | <b>STATE OF ILLINOIS<br/>DEPARTMENT OF TRANSPORTATION</b> | <b>REMOVAL PLAN</b>                             |                          |                            | O.R. RTE. 0003            | SECTION 18A-2 | COUNTY MCHENRY | TOTAL SHEETS 825 | SHEET NO. 59 |
|  | PLOT SCALE = 100.0000' / in. | CHECKED - GAB   | REVISED - |   | SCALE: 1" = 50'                                 | SHEET NO. 3 OF 13 SHEETS | STA. 112+00 TO STA. 121+50 | <b>CONTRACT NO. 60F72</b> |               |                |                  |              |
|  | PLOT DATE = 5/2/2012         | DATE = 5/3/2012 | REVISED - |   | FED. ROAD DIST. NO. 1 ILLINOIS FED. AID PROJECT |                          |                            |                           |               |                |                  |              |
|  |                              |                 |           |   |   |                          |                            |                           |               |                |                  |              |