
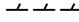
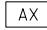



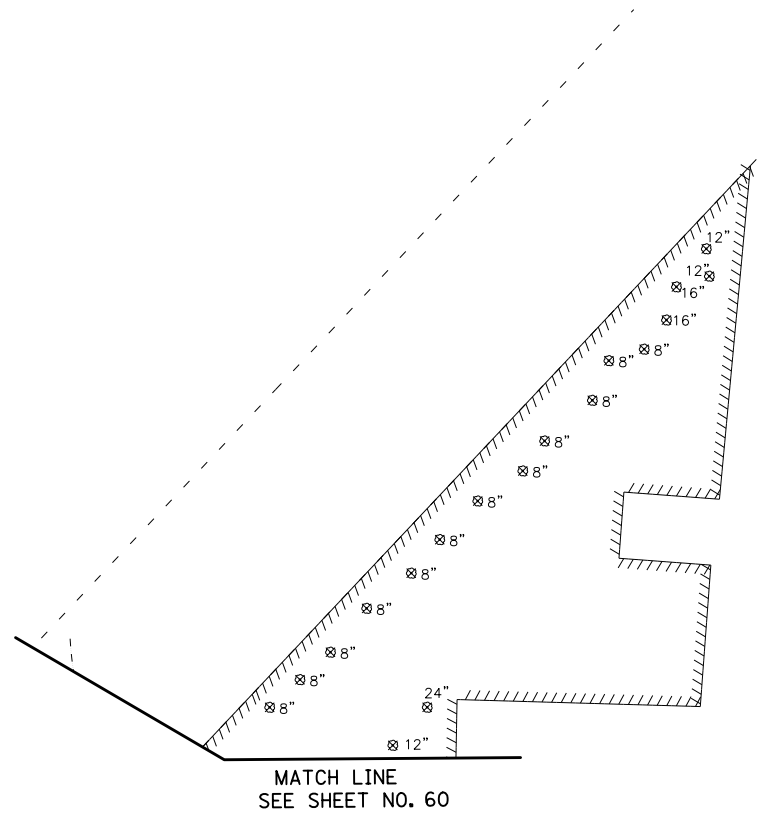
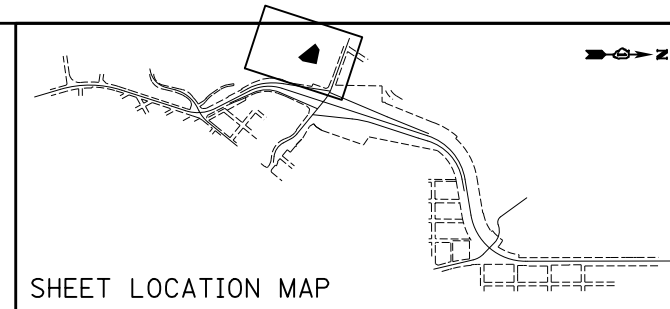


REMOVAL LEGEND

-  HMA SURFACE REMOVAL, 2 3/4"
-  REMOVAL LIMITS
-  STRUCTURE TO BE ADJUSTED
-  PIPE TO BE REMOVED
-  TREE REMOVAL
-  SOIL BORING/PAVEMENT CORE



MCCD PRAIRIE PATH

FILE NAME = ...\\D160F72-sht-rem-05.dgn	USER NAME = ctb	DESIGNED - CTB	REVISED -
		DRAWN - ARA	REVISED -
	PLOT SCALE = 100.0000' / in.	CHECKED - GAB	REVISED -
	PLOT DATE = 5/2/2012	DATE - 5/3/2012	REVISED -

**STATE OF ILLINOIS
DEPARTMENT OF TRANSPORTATION**

REMOVAL PLAN

SCALE: 1" = 50' SHEET NO. 5 OF 13 SHEETS STA. N/A TO STA. N/A

O.R. RTE.	SECTION	COUNTY	TOTAL SHEETS	SHEET NO.
0003	18A-2	MCHENRY	825	61
CONTRACT NO. 60F72				
<small>FED. ROAD DIST. NO. 1 ILLINOIS FED. AID PROJECT</small>				