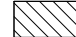
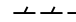
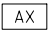



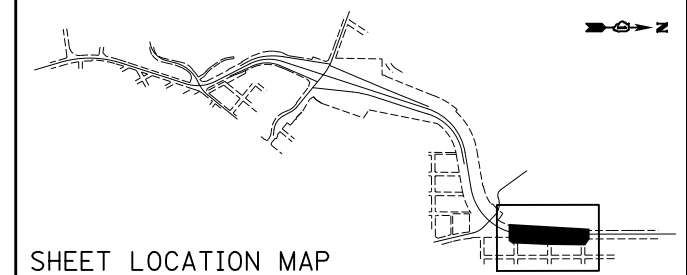
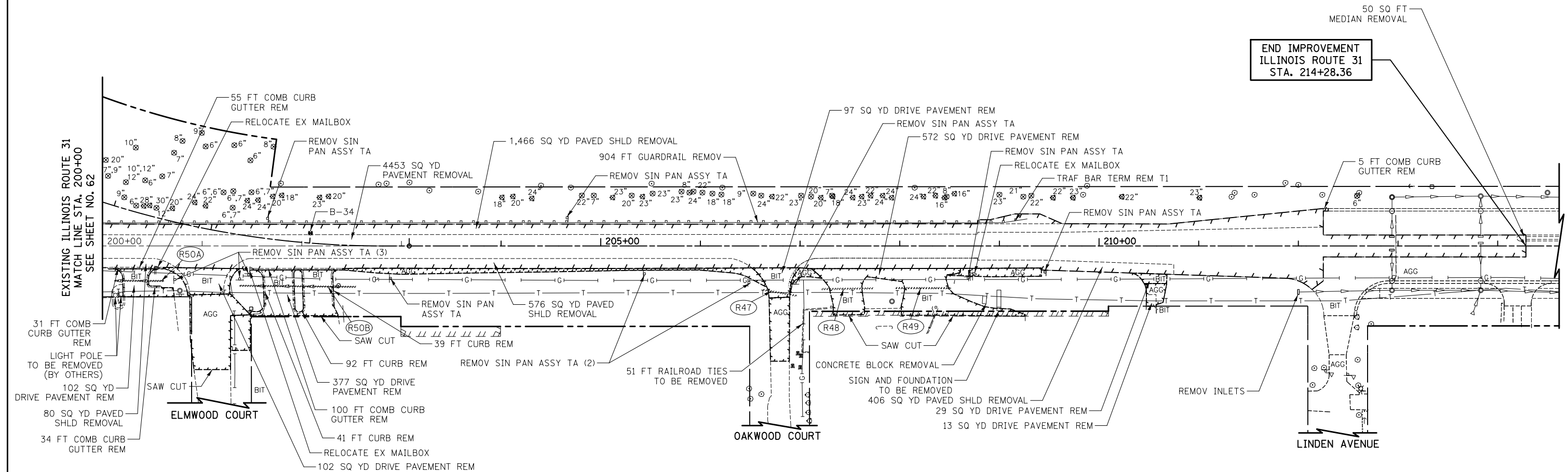


REMOVAL LEGEND

-  HMA SURFACE REMOVAL, 2 3/4"
-  REMOVAL LIMITS
-  STRUCTURE TO BE ADJUSTED
-  PIPE TO BE REMOVED
-  TREE REMOVAL
-  SOIL BORING/PAVEMENT CORE



SHEET LOCATION MAP



END IMPROVEMENT
ILLINOIS ROUTE 31
STA. 214+28.36

- (R47) 35' - PIPE CULVERT REMOV
TBF = 6.9 CU YD
- (R48) 52' - PIPE CULVERT REMOV
TBF = 10.0 CU YD
- (R49) 56' - PIPE CULVERT REMOV
TBF = 13.8 CU YD
- (R50A) 50' - PIPE CULVERT REMOV
TBF = 0.0 CU YD
- (R50B) 117' - PIPE CULVERT REMOV
TBF = 0.0 CU YD



ILLINOIS ROUTE 31

FILE NAME = ... \D160F72-sht-rem-07.dgn	USER NAME = ctb	DESIGNED - CTB	REVISED -	STATE OF ILLINOIS DEPARTMENT OF TRANSPORTATION	REMOVAL PLAN			O.R. RTE. 0003	SECTION 18A-2	COUNTY MCHENRY	TOTAL SHEETS 825	SHEET NO. 63
	PLOT SCALE = 100.0000' / in.	CHECKED - GAB	REVISED -		SCALE: 1" = 50'	SHEET NO. 7 OF 13 SHEETS	STA. 200+00	TO STA. 214+28.36	CONTRACT NO. 60F72			
	PLOT DATE = 5/2/2012	DATE - 5/3/2012	REVISED -		FED. ROAD DIST. NO. 1 ILLINOIS FED. AID PROJECT							