
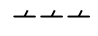
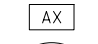



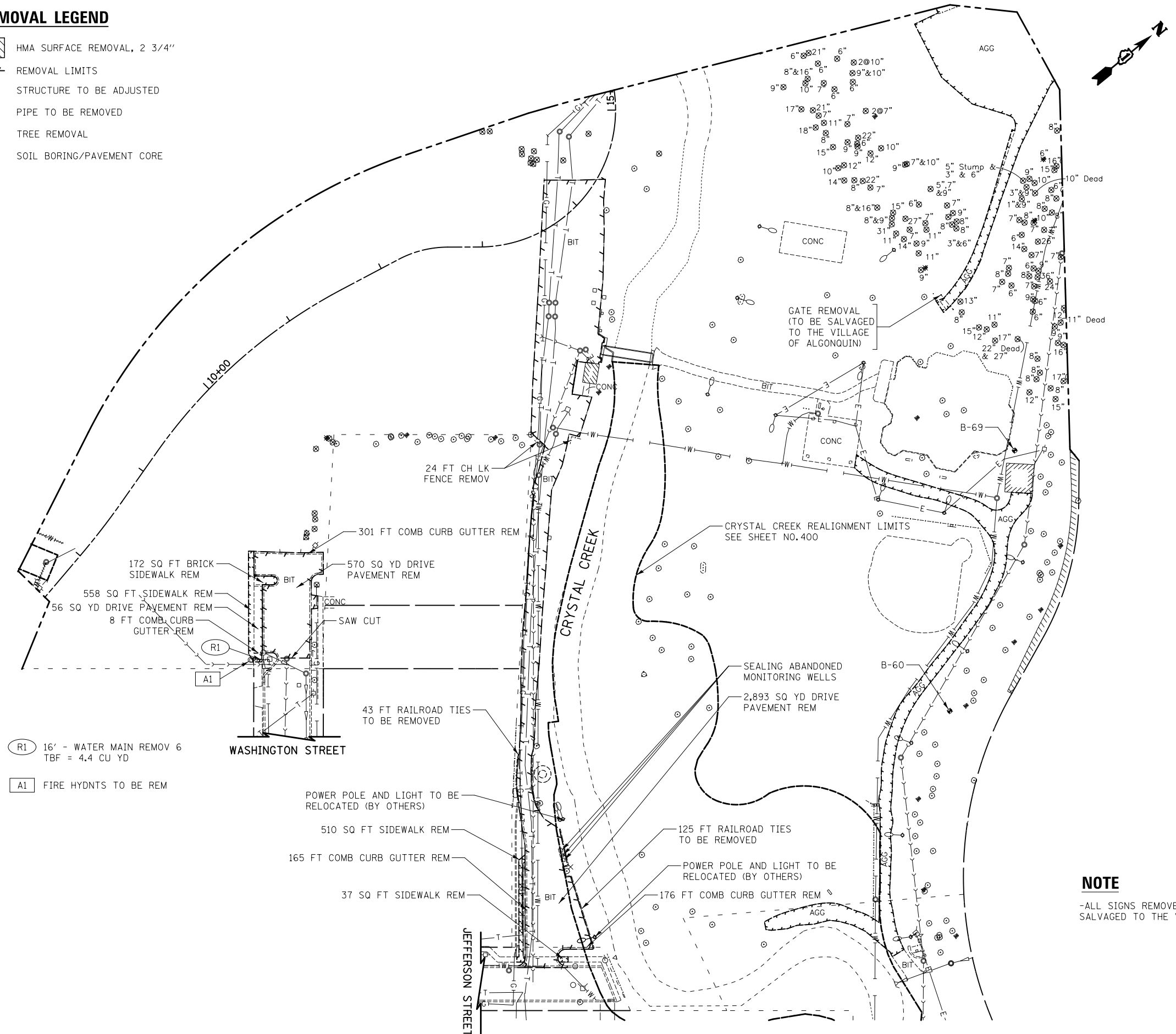
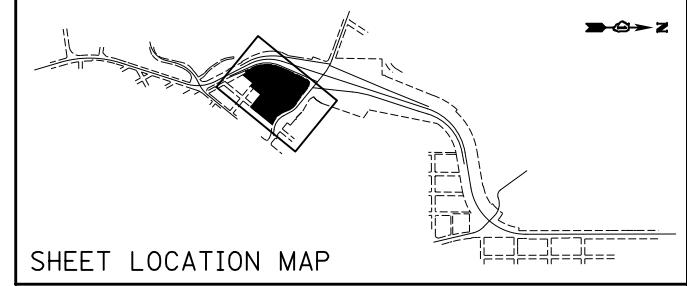
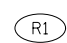
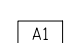


**REMOVAL LEGEND**

-  HMA SURFACE REMOVAL, 2 3/4"
-  REMOVAL LIMITS
-  STRUCTURE TO BE ADJUSTED
-  PIPE TO BE REMOVED
-  TREE REMOVAL
-  SOIL BORING/PAVEMENT CORE



-  R1 16' - WATER MAIN REMOV 6 TBF = 4.4 CU YD
-  A1 FIRE HYDNPTS TO BE REM

**NOTE**

-ALL SIGNS REMOVED FROM TOWNE PARK SHALL BE SALVAGED TO THE VILLAGE OF ALGONQUIN.



**TOWNE PARK**

FILE NAME = ...\\D160F72-sht-rem-13.dgn	USER NAME = ctb	DESIGNED - CTB	REVISED -	<b>STATE OF ILLINOIS DEPARTMENT OF TRANSPORTATION</b>	<b>REMOVAL PLAN</b>			O.R. RTE.	SECTION	COUNTY	TOTAL SHEETS	SHEET NO.	
	PLOT SCALE = 100.0000' / in.	DRAWN - ARA	REVISED -		SCALE: 1" = 50'	SHEET NO. 13 OF 13 SHEETS	STA.	TO STA.	0003	18A-2	MCHENRY	825	69
	PLOT DATE = 5/2/2012	CHECKED - GAB	REVISED -					<b>CONTRACT NO. 60F72</b>					
		DATE - 5/3/2012	REVISED -		<small>FED. ROAD DIST. NO. 1 ILLINOIS FED. AID PROJECT</small>								