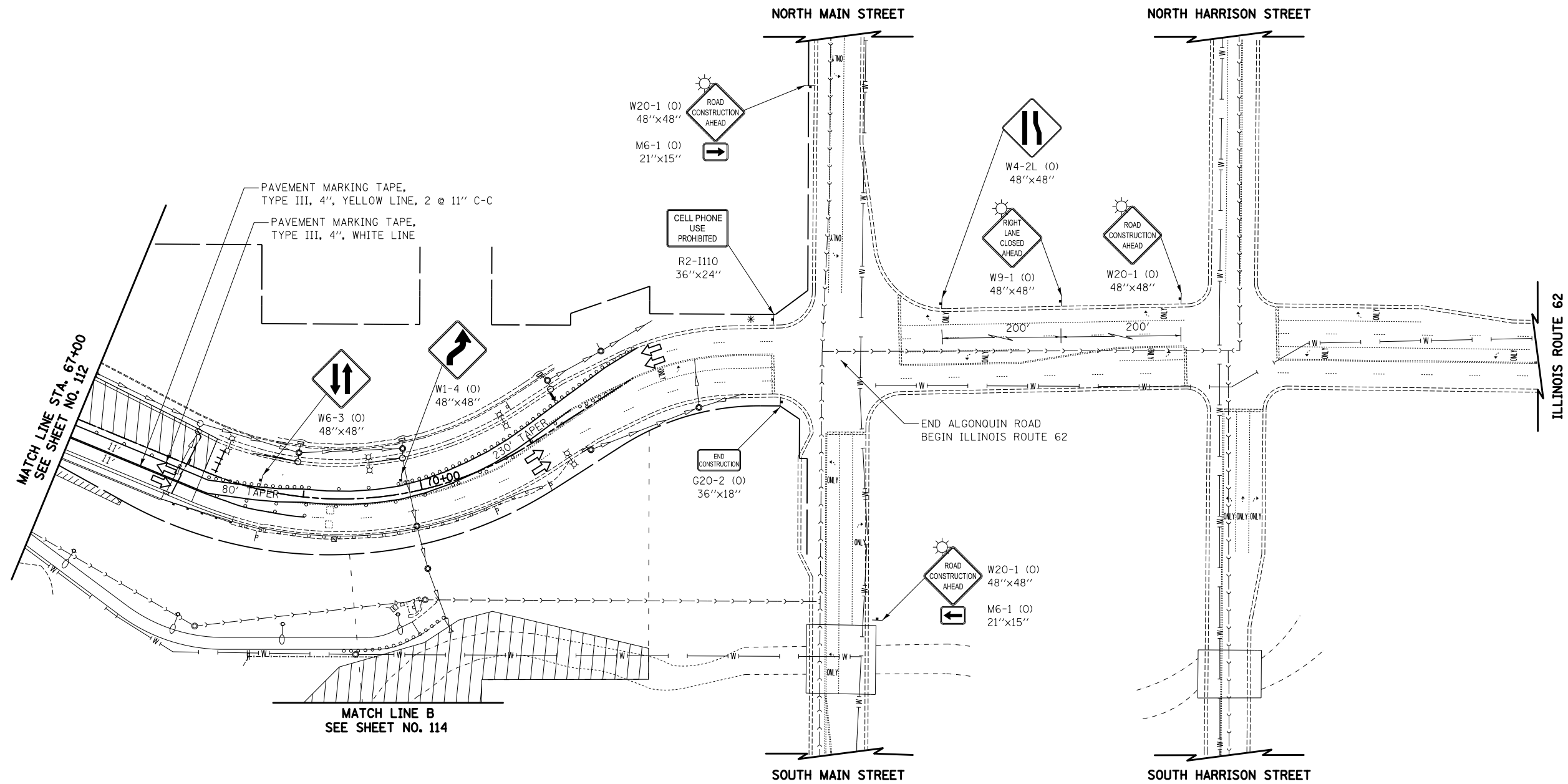
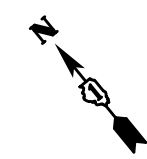


LEGEND

- TEMPORARY PAVEMENT
- CONSTRUCTION WORK ZONE
- DIRECTION OF TRAFFIC FLOW
- ARROW BOARD
- CONE, DRUM, OR TYPE I OR II BARRICADE
- TYPE I OR II BARRICADE WITH FLASHING LIGHTS
- VERTICAL PANEL
- TYPE III BARRICADE WITH FLASHING LIGHTS
- STEADY BURN
- MONO-DIRECTIONAL LIGHT

* PORTABLE CHANGEABLE MESSAGE SIGN SHALL BE PLACED ONE WEEK PRIOR TO INSTALLATION OF TEMPORARY TRAFFIC CONTROL. PHASE 1 MESSAGE "NEW TRAFFIC PATTERN" AND PHASE 2 "STARTS XX/XX/XXXX", OR AS DIRECTED BY ENGINEER.



ALGONQUIN ROAD

FILE NAME = ... \08-MOT\160F72-sht-MOT-11.dgn	USER NAME = ctb	DESIGNED - KWH	REVISED -	STATE OF ILLINOIS DEPARTMENT OF TRANSPORTATION	MAINTENANCE OF TRAFFIC - STAGE 1B	O.R. RTE. 0003	SECTION 18A-2	COUNTY MCHENRY	TOTAL SHEETS 825	SHEET NO. 113		
PLOT SCALE = 100.0000' / in.						SCALE: 1" = 50' SHEET NO. 11 OF 47 SHEETS STA. 67+00 TO STA. -----						
PLOT DATE = 5/2/2012						CONTRACT NO. 60F72						
DATE = 5/3/2012						FED. ROAD DIST. NO. 1 ILLINOIS FED. AID PROJECT						