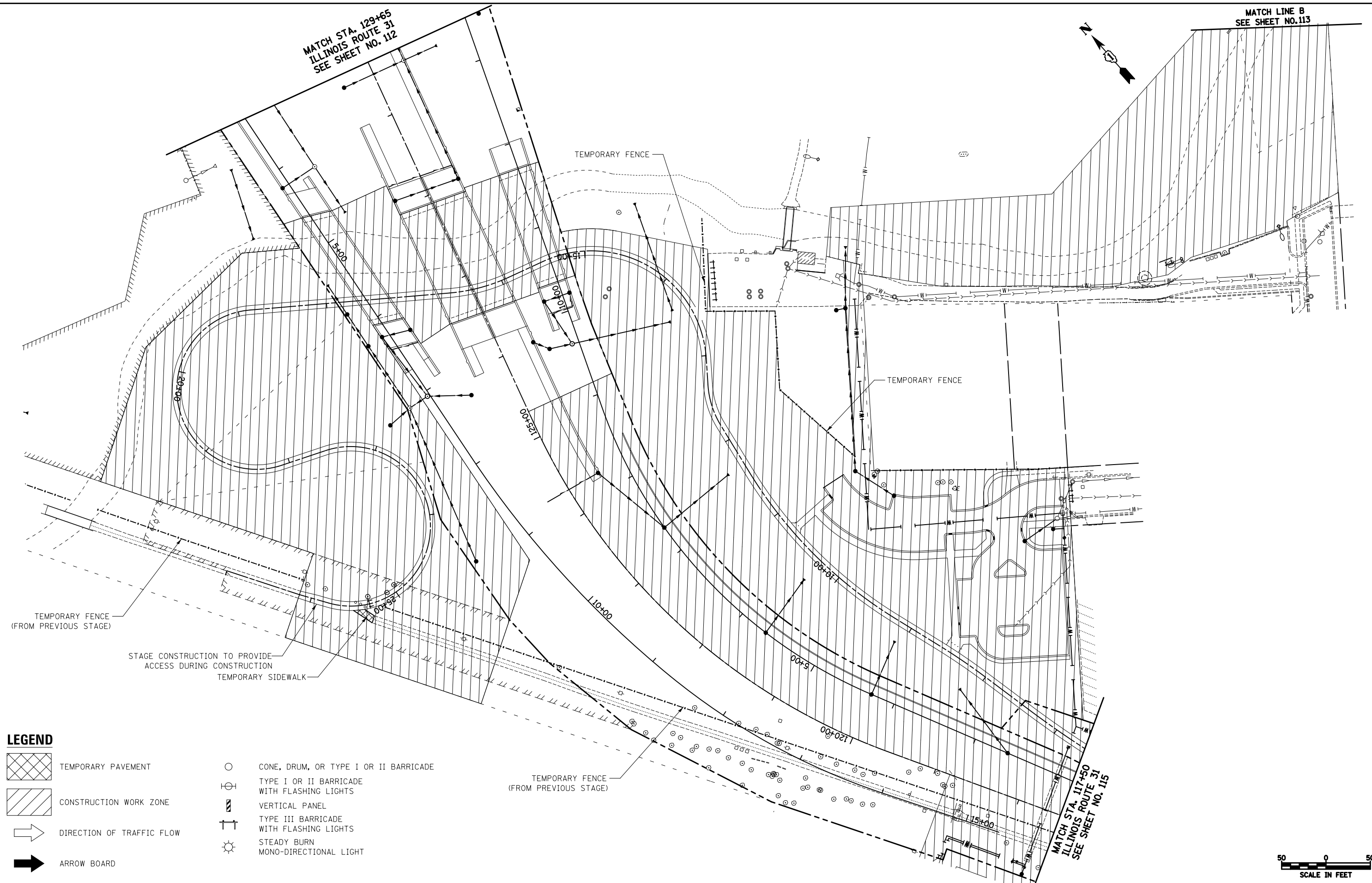
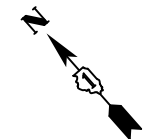

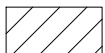






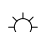


MATCH STA. 129+65
ILLINOIS ROUTE 31
SEE SHEET NO. 112

MATCH LINE B
SEE SHEET NO. 113



LEGEND

-  TEMPORARY PAVEMENT
-  CONSTRUCTION WORK ZONE
-  DIRECTION OF TRAFFIC FLOW
-  ARROW BOARD
-  CONE, DRUM, OR TYPE I OR II BARRICADE
-  TYPE I OR II BARRICADE WITH FLASHING LIGHTS
-  VERTICAL PANEL
-  TYPE III BARRICADE WITH FLASHING LIGHTS
-  STEADY BURN MONO-DIRECTIONAL LIGHT



FILE NAME = ...\\08-MOT\160F72-sht-MOT-12.dgn	USER NAME = ctb	DESIGNED - KWH	REVISED -
		DRAWN - AKW	REVISED -
	PLOT SCALE = 100.0000' / in.	CHECKED - GAB	REVISED -
	PLOT DATE = 5/2/2012	DATE - 5/3/2012	REVISED -

**STATE OF ILLINOIS
DEPARTMENT OF TRANSPORTATION**

MAINTENANCE OF TRAFFIC - STAGE 1B

SCALE: 1" = 50' SHEET NO. 12 OF 47 SHEETS STA. 117+50 TO STA. 129+65

O.R. RTE.	SECTION	COUNTY	TOTAL SHEETS	SHEET NO.
0003	18A-2	MCHENRY	825	114
CONTRACT NO. 60F72				
FED. ROAD DIST. NO. 1 ILLINOIS FED. AID PROJECT				