


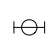
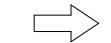




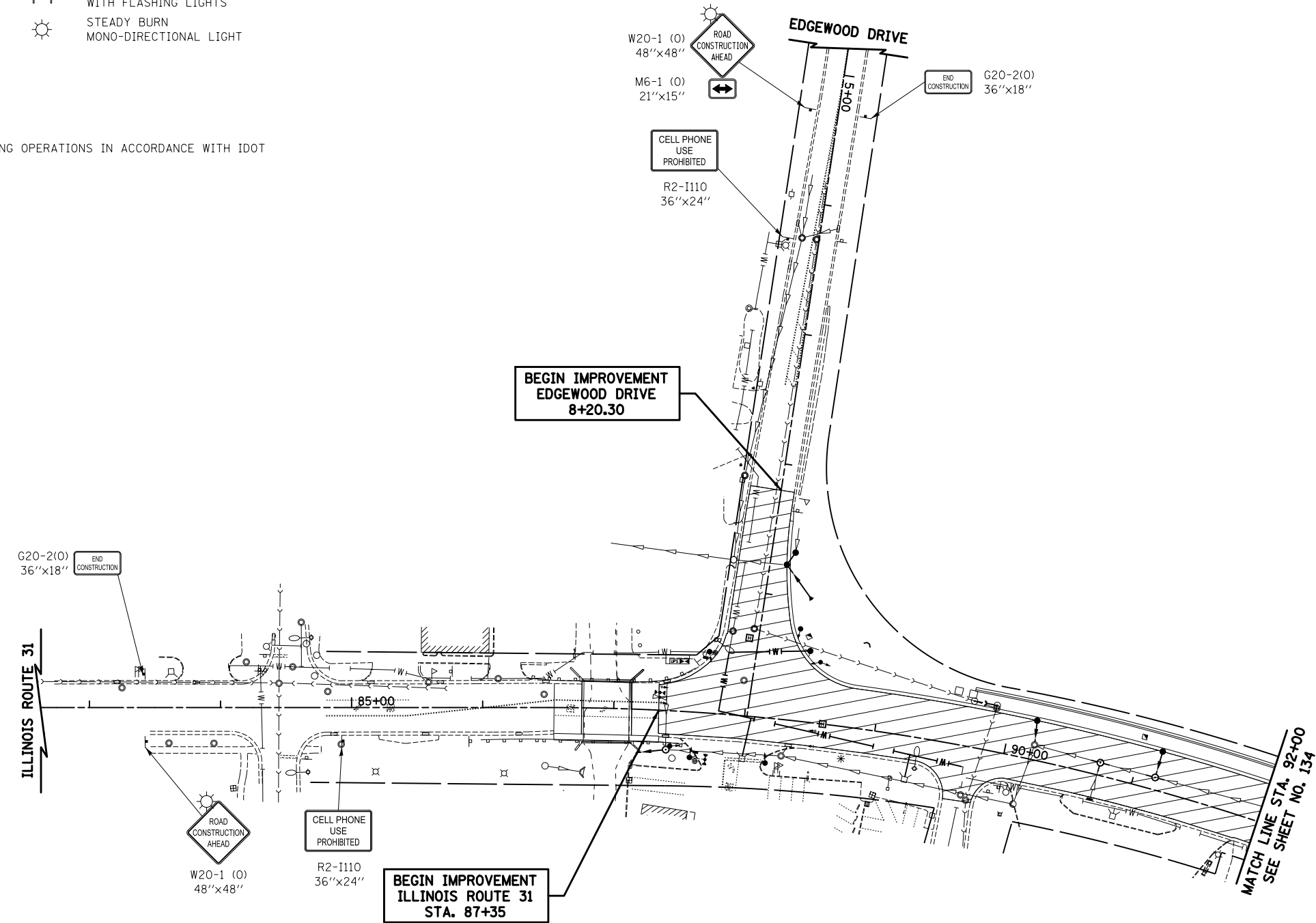


**LEGEND**

- |   |                           |   |   |
|---|---------------------------|---|---|
|  | TEMPORARY PAVEMENT        |  | CONE, DRUM, OR TYPE I OR II BARRICADE       |
|  | CONSTRUCTION WORK ZONE    |  | TYPE I OR II BARRICADE WITH FLASHING LIGHTS |
|  | DIRECTION OF TRAFFIC FLOW |  | VERTICAL PANEL                              |
|  | ARROW BOARD               |  | TYPE III BARRICADE WITH FLASHING LIGHTS     |
|   |                           |  | STEADY BURN MONO-DIRECTIONAL LIGHT          |

**NOTES**

1. MAINTAIN TRAFFIC ACCESS DURING MILLING OPERATIONS IN ACCORDANCE WITH IDOT STANDARD 701502.



\* PORTABLE CHANGEABLE MESSAGE SIGN SHALL BE PLACED ONE WEEK PRIOR TO INSTALLATION OF TEMPORARY TRAFFIC CONTROL. PHASE 1 MESSAGE "NEW TRAFFIC PATTERN" AND PHASE 2 "STARTS XX/XX/XXXX", OR AS DIRECTED BY ENGINEER.



ILLINOIS ROUTE 31

FILE NAME = ...\\08-MOT\160F72-shr-MOT-31.dgn	USER NAME = ctb	DESIGNED - KWH	REVISED -	<b>STATE OF ILLINOIS DEPARTMENT OF TRANSPORTATION</b>	<b>MAINTENANCE OF TRAFFIC - STAGE 3D</b>			O.R. RTE.	SECTION	COUNTY	TOTAL SHEETS	SHEET NO.	
		DRAWN - AKW	REVISED -		SCALE: 1" = 50'	SHEET NO. 31 OF 47 SHEETS	STA. 87+35	TO STA. 92+00	0003	18A-2	MCHENRY	825	133
		CHECKED - GAB	REVISED -		<b>CONTRACT NO. 60F72</b>								
		DATE - 5/3/2012	REVISED -		FED. ROAD DIST. NO. 1 ILLINOIS FED. AID PROJECT								