
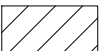
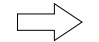





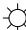
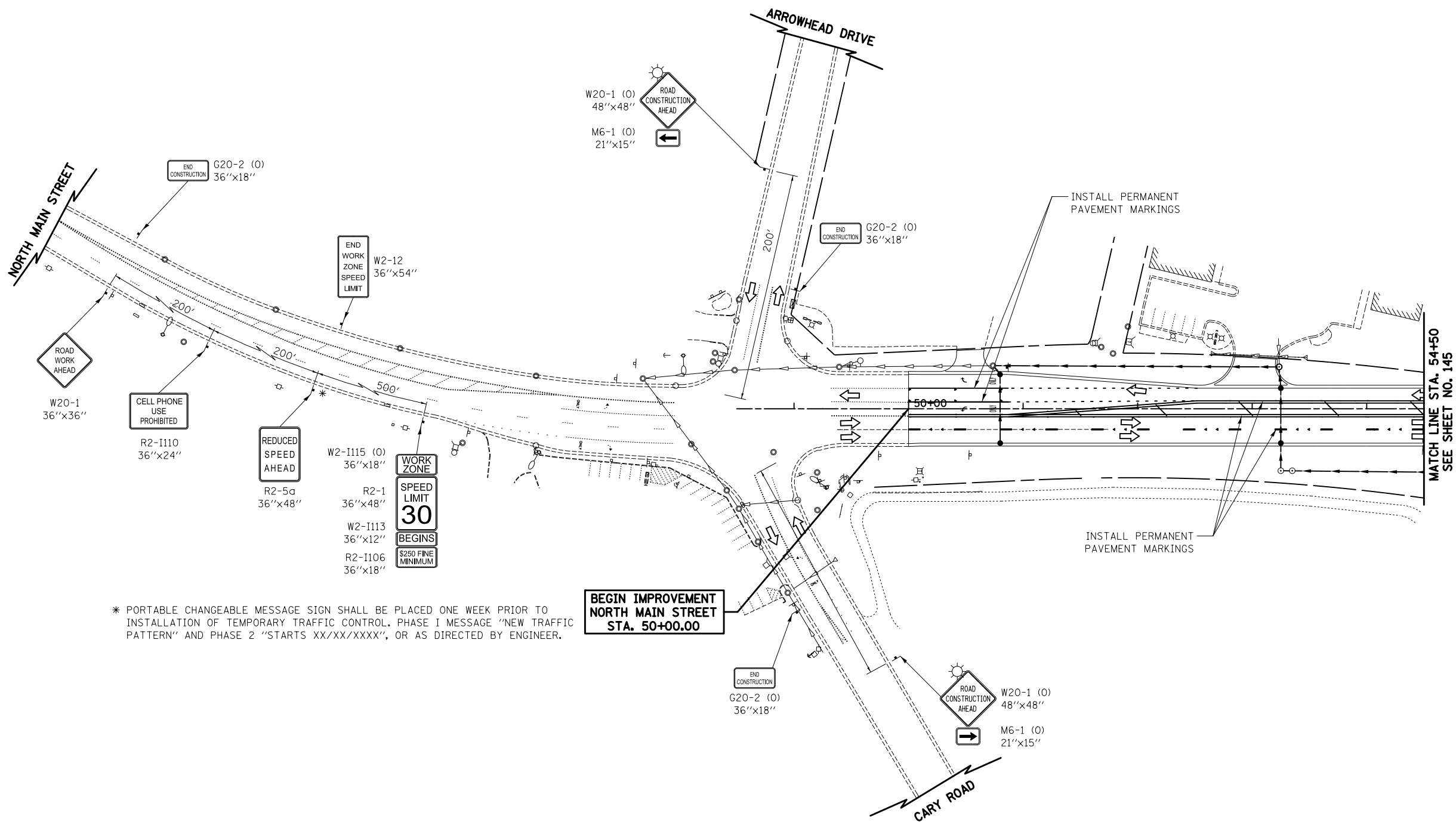


LEGEND

-  TEMPORARY PAVEMENT
-  CONSTRUCTION WORK ZONE
-  DIRECTION OF TRAFFIC FLOW
-  ARROW BOARD
-  CONE, DRUM, OR TYPE I OR II BARRICADE
-  TYPE I OR II BARRICADE WITH FLASHING LIGHTS
-  VERTICAL PANEL
-  TYPE III BARRICADE WITH FLASHING LIGHTS
-  STEADY BURN MONO-DIRECTIONAL LIGHT



* PORTABLE CHANGEABLE MESSAGE SIGN SHALL BE PLACED ONE WEEK PRIOR TO INSTALLATION OF TEMPORARY TRAFFIC CONTROL, PHASE I MESSAGE "NEW TRAFFIC PATTERN" AND PHASE 2 "STARTS XX/XX/XXXX", OR AS DIRECTED BY ENGINEER.

**BEGIN IMPROVEMENT
NORTH MAIN STREET
STA. 50+00.00**

MATCH LINE STA. 54+50
SEE SHEET NO. 145



NORTH MAIN STREET

FILE NAME = ...\\08-MOT\160F72-sht-MOT-42.dgn	USER NAME = ctb	DESIGNED - KWH	REVISED -	STATE OF ILLINOIS DEPARTMENT OF TRANSPORTATION	MAINTENANCE OF TRAFFIC - STAGE 4C	O.R. RTE. 0003	SECTION 18A-2	COUNTY MCHENRY	TOTAL SHEETS 825	SHEET NO. 144
PLOT SCALE = 100.0000' / 1" =	CHECKED - GAB	DATE - 5/3/2012	REVISED -	SCALE: 1" = 50'	SHEET NO. 42 OF 47 SHEETS	STA. 50+00	TO STA. 54+50	CONTRACT NO. 60F72		
				FED. ROAD DIST. NO. 1 ILLINOIS FED. AID PROJECT						