

STATE OF ILLINOIS )  
COUNTY OF COOK ) S.S.

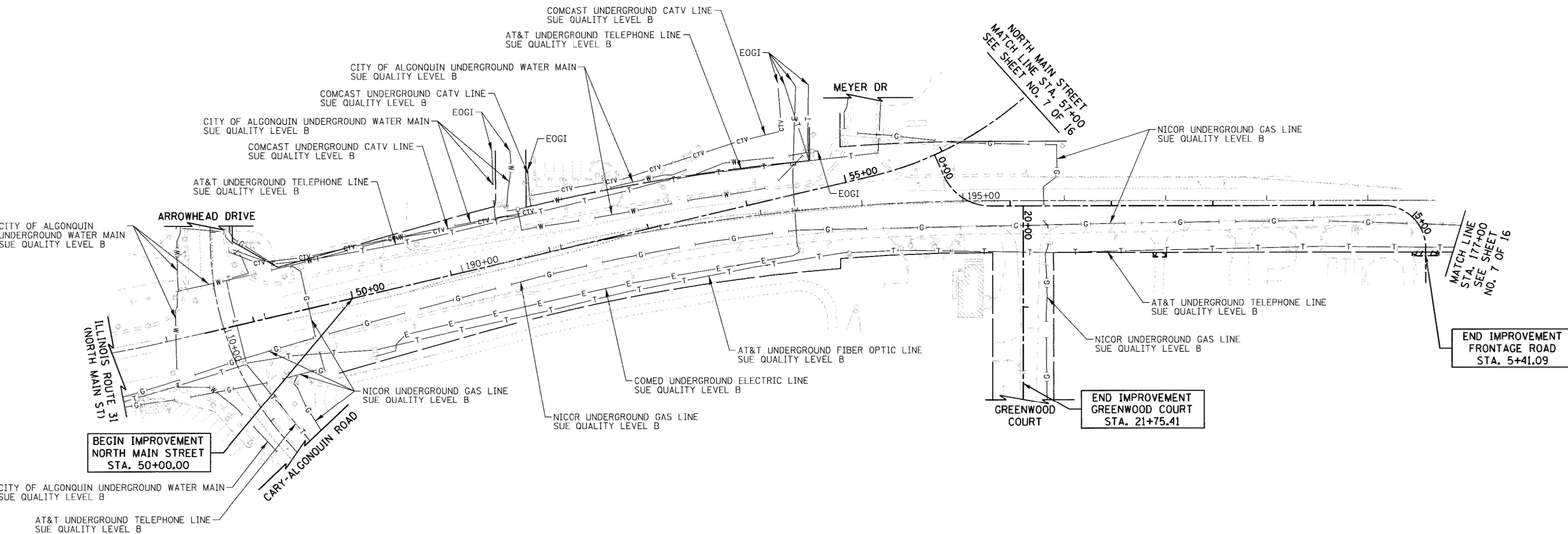
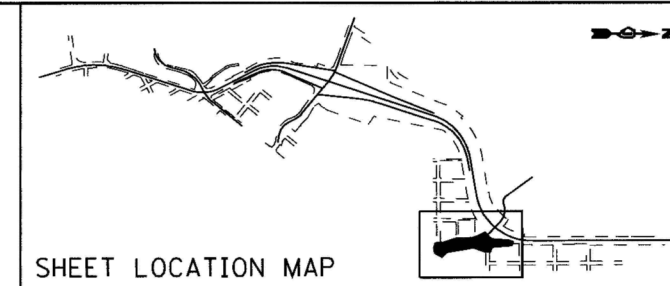
UTILITY(IES) SHOWN HEREON HAVE BEEN INVESTIGATED BY ASE IN ACCORDANCE WITH SUE INDUSTRY STANDARDS QUALITY LEVEL B (QLB). ALL OTHER INFORMATION SHOWN HAS BEEN PROVIDED BY OTHERS.

FIELD WORK WAS PERFORMED BETWEEN THE 1ST OF SEPTEMBER AND 26TH DAY OF OCTOBER, 2010.

IN WITNESS WHEREOF, I HAVE HEREUNTO SET MY HAND AND SEAL THIS 28TH DAY OF OCTOBER, 2010. CHICAGO, IL.



*Steven M. Rienks*  
STEVEN M. RIENKS - ILLINOIS PROFESSIONAL  
ENGINEER NUMBER 62-044619  
MY LICENSE EXPIRES 11/30/2011



BEGIN IMPROVEMENT  
NORTH MAIN STREET  
STA. 50+00.00

END IMPROVEMENT  
GREENWOOD COURT  
STA. 21+75.41

END IMPROVEMENT  
FRONTAGE ROAD  
STA. 5+41.09

**LEGEND**

- T — EXISTING UNDERGROUND TELEPHONE
- W — EXISTING UNDERGROUND WATER
- E — EXISTING UNDERGROUND ELECTRIC
- G — EXISTING UNDERGROUND GAS
- CTV — EXISTING UNDERGROUND CABLE TV
- EOGI END OF GEOPHYSICAL LOCATION

**NOTES:**

1. HORIZONTAL CONTROL, VERTICAL CONTROL, CENTERLINE ALIGNMENT, TOPOGRAPHIC FEATURES, AND UTILITY LINE WORK (EXCEPTING SUE QUALITY LEVEL B DESIGNATIONS) WERE SUPPLIED BY ILLINOIS DEPARTMENT OF TRANSPORTATION.

**AMERICAN**  
SURVEYING & ENGINEERING, P.C.  
SURVEYORS - ENGINEERS  
GEODESISTS - MAPPING SCIENTISTS  
Chicago: 312-277-2000 / Fax 312-277-2002  
Dixon: 815-288-6231 / Fax 815-288-6277  
Aurora: 603-897-4105 / Fax 630-897-4121  
Illinois Professional Design Firm No. 184-003192

FILE NAME =	USER NAME = #USER#
...\\geo\5160F72-sht-SUE-13.dgn	
PLOT SCALE = 50.0000' / IN.	
PLOT DATE = 10/27/2010	

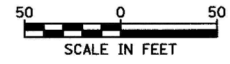
DESIGNED - CTB	REVISED -
DRAWN - ARA	REVISED -
CHECKED - GAB	REVISED -
DATE -	REVISED -

**STATE OF ILLINOIS  
DEPARTMENT OF TRANSPORTATION**

**SUB-SURFACE UTILITY ENGINEERING**

SCALE: 1" = 50' SHEET NO. 13 OF 16 SHEETS STA. 50+00 TO STA. 57+00

NORTH MAIN STREET  
FRONTAGE ROAD  
GREENWOOD COURT



F.A.P. RTE.	SECTION	COUNTY	TOTAL SHEETS	SHEET NO.
0003	18A-2	MCHENRY	825	225
CONTRACT NO. 60F72				
FED. ROAD DIST. NO. 1 ILLINOIS FED. AID PROJECT				