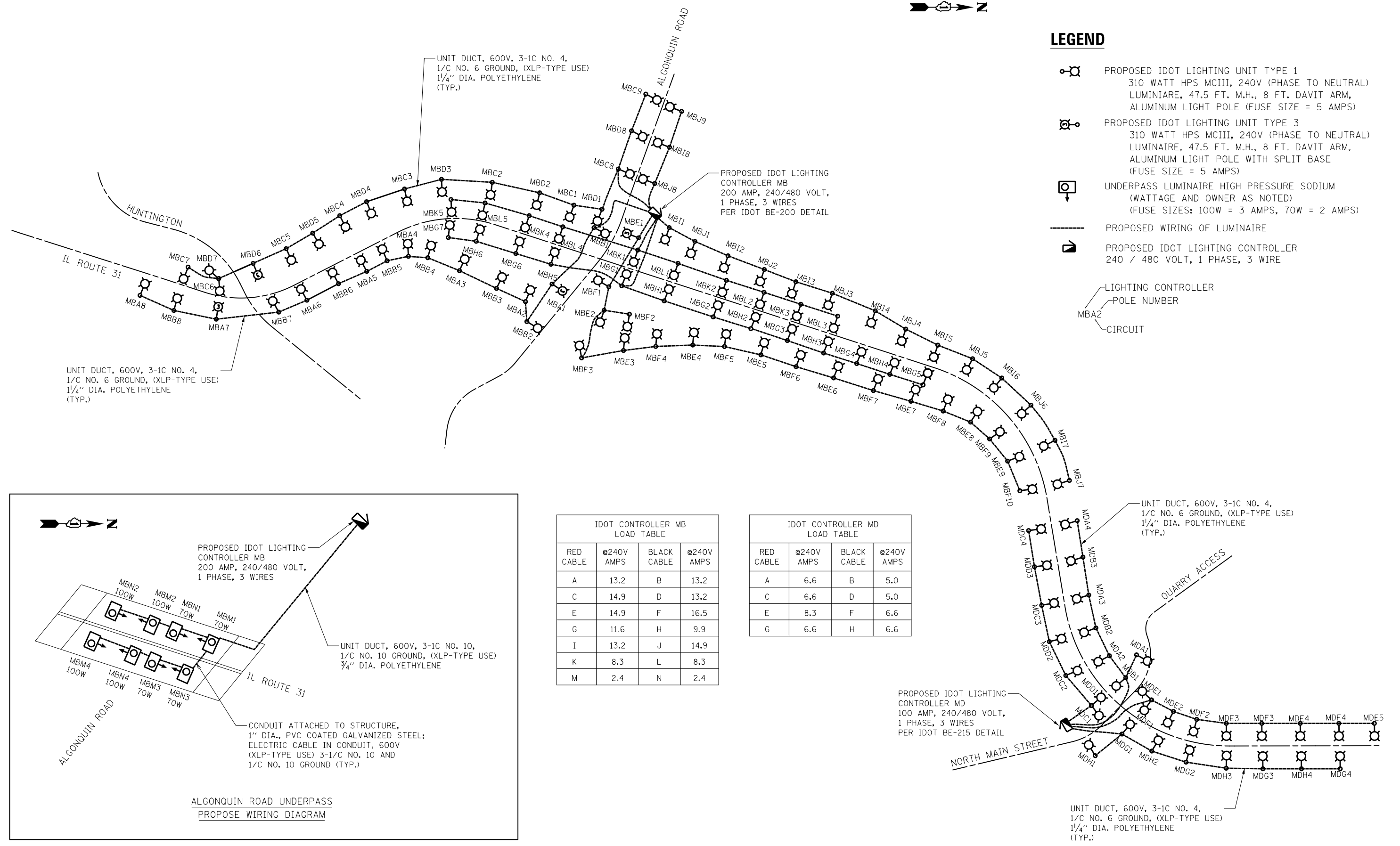


LEGEND

- PROPOSED IDOT LIGHTING UNIT TYPE 1
310 WATT HPS MCIII, 240V (PHASE TO NEUTRAL)
LUMINAIRE, 47.5 FT. M.H., 8 FT. DAVIT ARM,
ALUMINUM LIGHT POLE (FUSE SIZE = 5 AMPS)
 - PROPOSED IDOT LIGHTING UNIT TYPE 3
310 WATT HPS MCII, 240V (PHASE TO NEUTRAL)
LUMINAIRE, 47.5 FT. M.H., 8 FT. DAVIT ARM,
ALUMINUM LIGHT POLE WITH SPLIT BASE
(FUSE SIZE = 5 AMPS)
 - UNDERPASS LUMINAIRE HIGH PRESSURE SODIUM
(WATTAGE AND OWNER AS NOTED)
(FUSE SIZES: 100W = 3 AMPS, 70W = 2 AMPS)
 - PROPOSED WIRING OF LUMINAIRE
 - PROPOSED IDOT LIGHTING CONTROLLER
240 / 480 VOLT, 1 PHASE, 3 WIRE
- LIGHTING CONTROLLER
 POLE NUMBER
 CIRCUIT

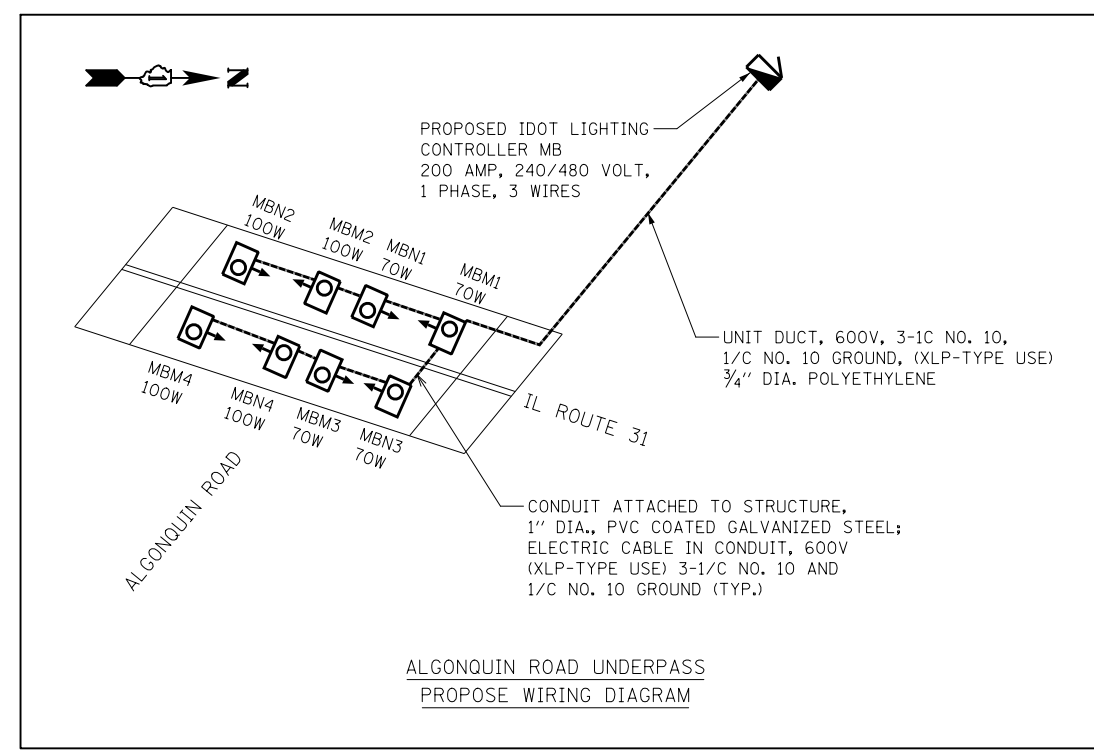


UNIT DUCT, 600V, 3-1C NO. 4,
1/C NO. 6 GROUND, (XLP-TYPE USE)
1 1/4" DIA. POLYETHYLENE
(TYP.)

PROPOSED IDOT LIGHTING
CONTROLLER MB
200 AMP, 240/480 VOLT,
1 PHASE, 3 WIRES
PER IDOT BE-200 DETAIL

UNIT DUCT, 600V, 3-1C NO. 4,
1/C NO. 6 GROUND, (XLP-TYPE USE)
1 1/4" DIA. POLYETHYLENE
(TYP.)

UNIT DUCT, 600V, 3-1C NO. 4,
1/C NO. 6 GROUND, (XLP-TYPE USE)
1 1/4" DIA. POLYETHYLENE
(TYP.)



IDOT CONTROLLER MB
LOAD TABLE

RED CABLE	@240V AMPS	BLACK CABLE	@240V AMPS
A	13.2	B	13.2
C	14.9	D	13.2
E	14.9	F	16.5
G	11.6	H	9.9
I	13.2	J	14.9
K	8.3	L	8.3
M	2.4	N	2.4

IDOT CONTROLLER MD
LOAD TABLE

RED CABLE	@240V AMPS	BLACK CABLE	@240V AMPS
A	6.6	B	5.0
C	6.6	D	5.0
E	8.3	F	6.6
G	6.6	H	6.6

PROPOSED IDOT LIGHTING
CONTROLLER MD
100 AMP, 240/480 VOLT,
1 PHASE, 3 WIRES
PER IDOT BE-215 DETAIL

UNIT DUCT, 600V, 3-1C NO. 4,
1/C NO. 6 GROUND, (XLP-TYPE USE)
1 1/4" DIA. POLYETHYLENE
(TYP.)