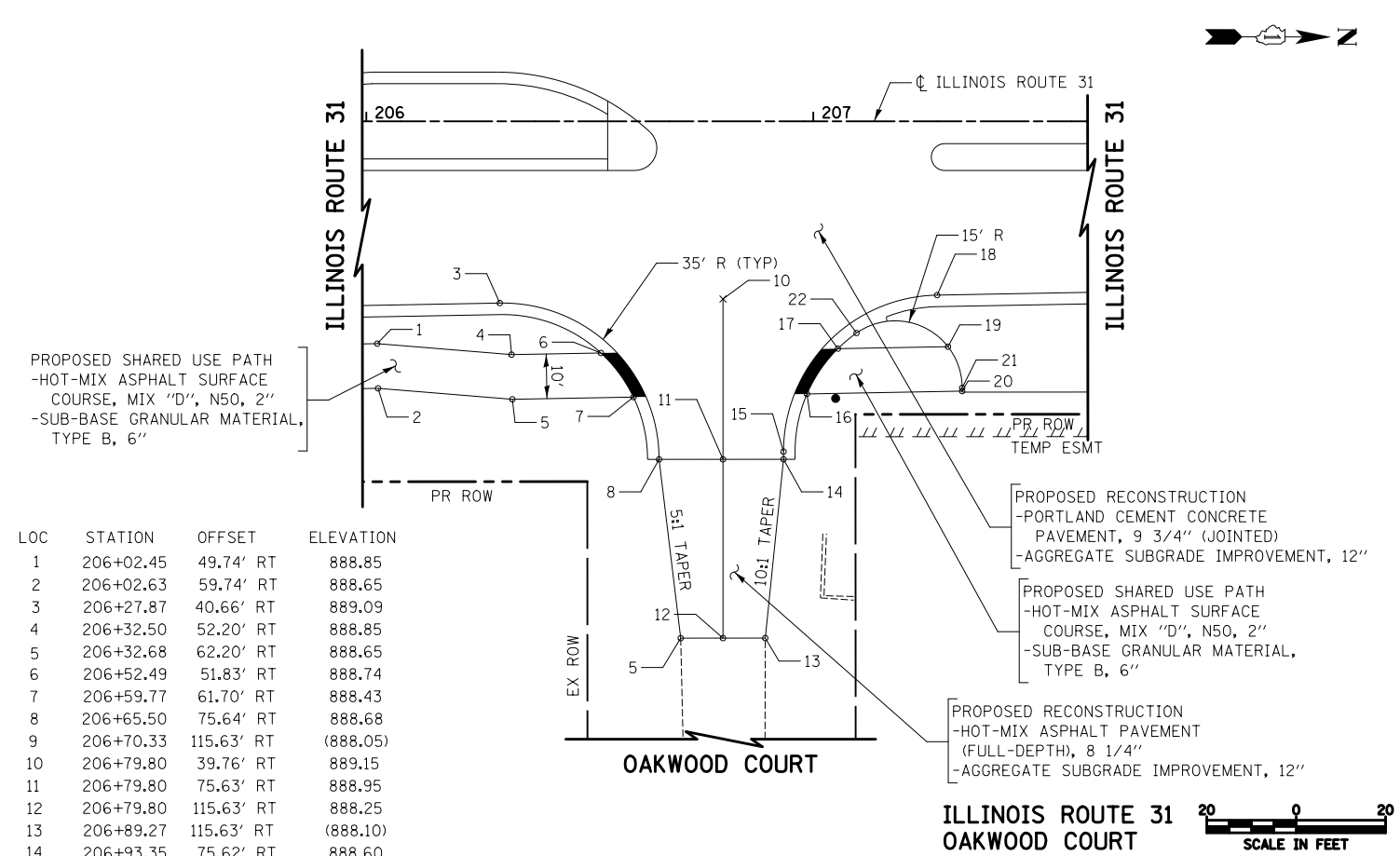


LOC	STATION	OFFSET	ELEVATION
1	177+78.46	47.00' RT	883.00
2	177+79.96	55.58' RT	886.17
3	177+79.96	65.58' RT	885.97
4	177+95.95	55.58' RT	883.66
5	178+04.35	65.58' RT	885.55
6	178+08.94	75.21' RT	884.15
7	178+12.70	91.06' RT	884.49
8	178+20.04	138.75' RT	(885.55)
9	178+39.82	135.16' RT	(886.15)
10	178+37.75	86.57' RT	885.10
11	178+43.66	65.58' RT	886.21
12	178+52.06	55.58' RT	885.98
13	178+69.54	47.00' RT	884.83
14	178+86.33	49.58' RT	-
15	178+97.60	55.58' RT	885.62
16	179+00.30	63.27' RT	-
17	179+00.48	65.58' RT	886.07



LOC	STATION	OFFSET	ELEVATION
1	206+02.45	49.74' RT	888.85
2	206+02.63	59.74' RT	888.65
3	206+27.87	40.66' RT	889.09
4	206+32.50	52.20' RT	888.85
5	206+32.68	62.20' RT	888.65
6	206+52.49	51.83' RT	888.74
7	206+59.77	61.70' RT	888.43
8	206+65.50	75.64' RT	888.68
9	206+70.33	115.63' RT	(888.05)
10	206+79.80	39.76' RT	889.15
11	206+79.80	75.63' RT	888.95
12	206+79.80	115.63' RT	888.25
13	206+89.27	115.63' RT	(888.10)
14	206+93.35	75.62' RT	888.60
15	206+93.34	73.90' RT	888.65
16	206+98.59	61.00' RT	888.40
17	207+05.50	50.87' RT	888.63
18	207+27.70	38.88' RT	888.83
19	207+30.15	50.42' RT	887.57
20	207+33.31	60.59' RT	886.93
21	207+33.31	59.64' RT	-
22	207+09.67	47.37' RT	-

LEGEND

- (XXX.XX) EXISTING PAVEMENT ELEVATION
- XXX.XX PROPOSED PAVEMENT ELEVATION

IN THE RESURFACING AREA, ALL EXISTING ELEVATIONS WILL ALSO BE THE FINAL PROPOSED SURFACE ELEVATION

DETAILS

FILE NAME =	USER NAME = okw	DESIGNED - CTB	REVISED -
...\\D160F72-sht-details-06-intersection.dgn		DRAWN - CTB	REVISED -
	PLOT SCALE = 40.0000' / in.	CHECKED - GAB	REVISED -
	PLOT DATE = 5/2/2012	DATE - 5/3/2012	REVISED -

**STATE OF ILLINOIS
DEPARTMENT OF TRANSPORTATION**

INTERSECTION DETAILS

SCALE: 1" = 20' SHEET NO. 6 OF 9 SHEETS STA. TO STA.

O.R. RTE.	SECTION	COUNTY	TOTAL SHEETS	SHEET NO.
0003	18A-2	MCHENRY	825	350
CONTRACT NO. 60F72				
FED. ROAD DIST. NO. 1 ILLINOIS FED. AID PROJECT				