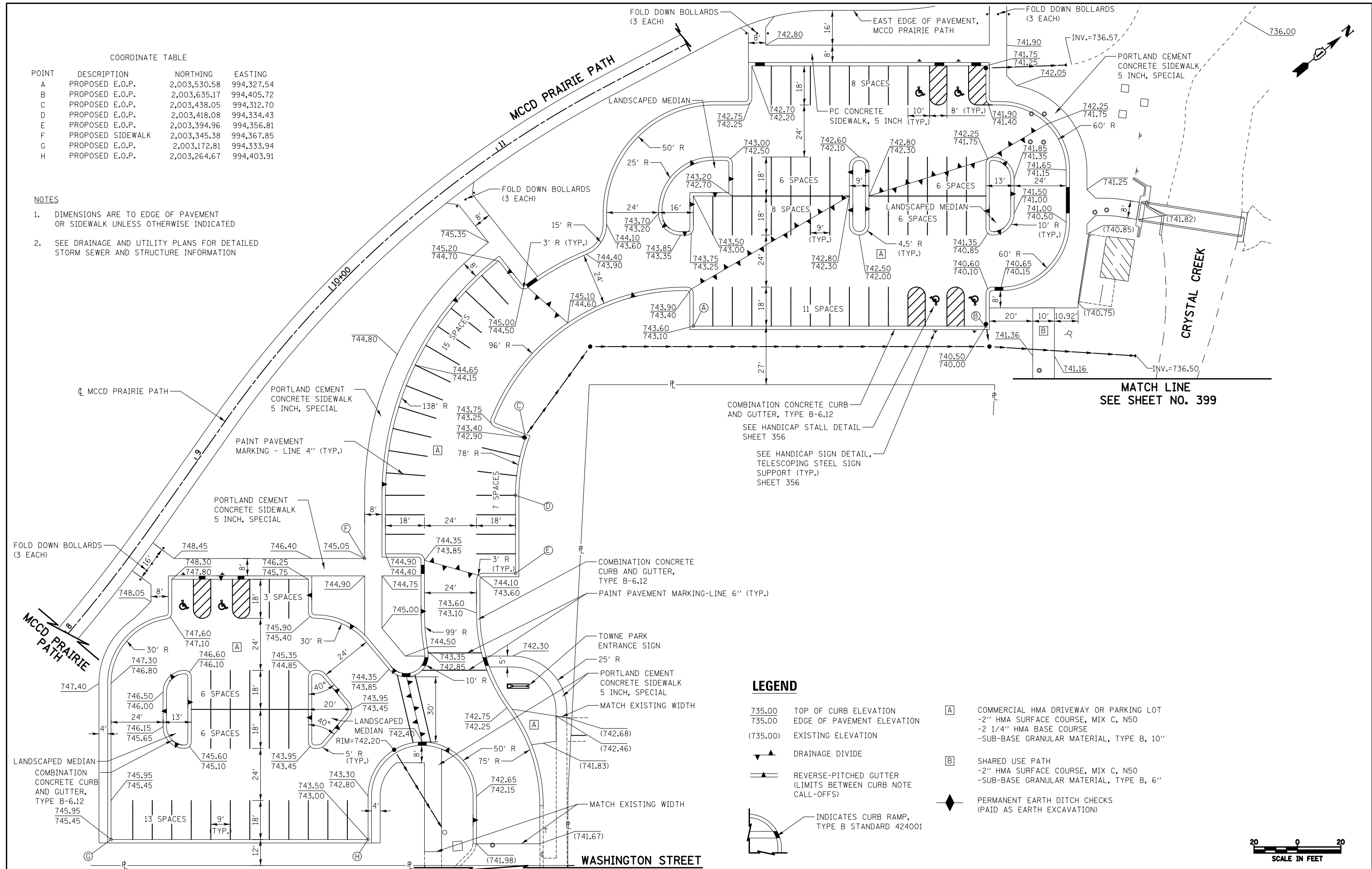


COORDINATE TABLE

POINT	DESCRIPTION	NORTHING	EASTING
A	PROPOSED E.O.P.	2,003,530.58	994,327.54
B	PROPOSED E.O.P.	2,003,635.17	994,405.72
C	PROPOSED E.O.P.	2,003,438.05	994,312.70
D	PROPOSED E.O.P.	2,003,418.08	994,334.43
E	PROPOSED E.O.P.	2,003,394.96	994,356.81
F	PROPOSED SIDEWALK	2,003,345.38	994,367.85
G	PROPOSED E.O.P.	2,003,172.81	994,333.94
H	PROPOSED E.O.P.	2,003,264.67	994,403.91

NOTES

- DIMENSIONS ARE TO EDGE OF PAVEMENT OR SIDEWALK UNLESS OTHERWISE INDICATED
- SEE DRAINAGE AND UTILITY PLANS FOR DETAILED STORM SEWER AND STRUCTURE INFORMATION



LEGEND

- 735.00 TOP OF CURB ELEVATION
- 735.00 EDGE OF PAVEMENT ELEVATION
- (735.00) EXISTING ELEVATION
- ▲ DRAINAGE DIVIDE
- ▲ REVERSE-PITCHED GUTTER (LIMITS BETWEEN CURB NOTE CALL-OFFS)
- ◆ INDICATES CURB RAMP, TYPE B STANDARD 424001
- [A] COMMERCIAL HMA DRIVEWAY OR PARKING LOT
-2" HMA SURFACE COURSE, MIX C, N50
-2 1/4" HMA BASE COURSE
-SUB-BASE GRANULAR MATERIAL, TYPE B, 10"
- [B] SHARED USE PATH
-2" HMA SURFACE COURSE, MIX C, N50
-SUB-BASE GRANULAR MATERIAL, TYPE B, 6"
- ◆ PERMANENT EARTH DITCH CHECKS (PAID AS EARTH EXCAVATION)



FILE NAME = ...\\D160F72-sht-Towne Park-01.dgn	USER NAME = ctb	DESIGNED - BAS	REVISED -
		DRAWN - BAS	REVISED -
		CHECKED - GAB	REVISED -
		DATE - 5/3/2012	REVISED -

STATE OF ILLINOIS
DEPARTMENT OF TRANSPORTATION

TOWNE PARK PLANS
SCALE: 1" = 20'
SHEET NO. 1 OF 2 SHEETS
STA. TO STA.

O.R. RTE.	SECTION	COUNTY	TOTAL SHEETS	SHEET NO.
0003	18A-2	MCHENRY	825	398

CONTRACT NO. 60F72
FED. ROAD DIST. NO. 1 ILLINOIS FED. AID PROJECT