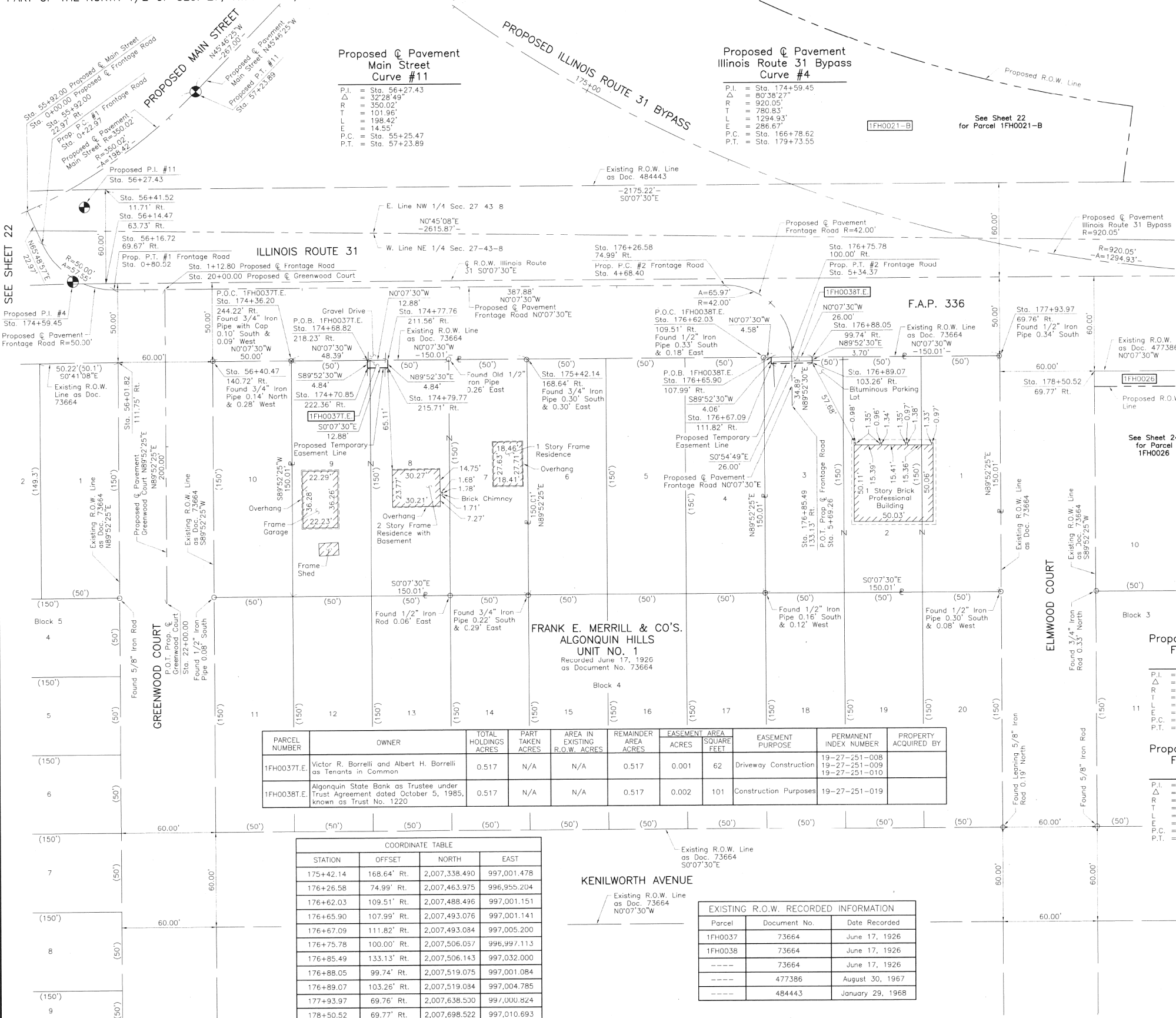
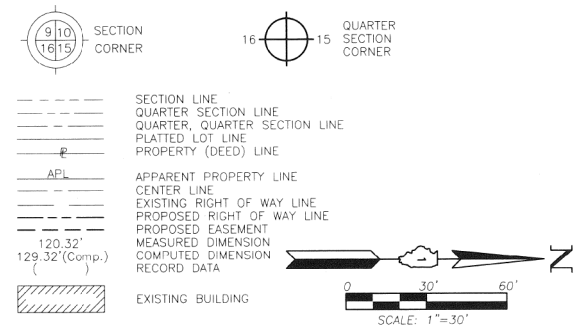


PART OF THE NORTH 1/2 OF SEC. 27, TWP. 43 N., R. 8 E. OF THE 3RD. P.M., IN McHENRY COUNTY, ILLINOIS.

LEGEND



SEE SHEET 22

SEE SHEET 24

ROW PLAT	MADE	CHECKED	DATE
NO.			
BY			
DATE			

PARCEL NUMBER	OWNER	TOTAL HOLDINGS ACRES	PART TAKEN ACRES	AREA IN EXISTING R.O.W. ACRES	REMAINDER AREA ACRES	EASEMENT AREA ACRES	EASEMENT AREA SQUARE FEET	EASEMENT PURPOSE	PERMANENT INDEX NUMBER	PROPERTY ACQUIRED BY
1FH0037E	Victor R. Borrelli and Albert H. Borrelli as Tenants in Common	0.517	N/A	N/A	0.517	0.001	62	Driveway Construction	19-27-251-008 19-27-251-009	
1FH0038E	Algonquin State Bank as Trustee under Trust Agreement dated October 5, 1985, known as Trust No. 1220	0.517	N/A	N/A	0.517	0.002	101	Construction Purposes	19-27-251-019	

COORDINATE TABLE			
STATION	OFFSET	NORTH	EAST
175+42.14	168.64' Rt.	2,007,338.490	997,001.478
176+26.58	74.99' Rt.	2,007,463.975	996,955.204
176+62.03	109.51' Rt.	2,007,488.496	997,001.151
176+65.90	107.99' Rt.	2,007,493.076	997,001.141
176+67.09	111.82' Rt.	2,007,493.084	997,005.200
176+75.78	100.00' Rt.	2,007,506.057	996,997.113
176+85.49	133.13' Rt.	2,007,506.143	997,032.000
176+88.05	99.74' Rt.	2,007,519.075	997,001.084
176+89.07	103.26' Rt.	2,007,519.084	997,004.785
177+93.97	69.76' Rt.	2,007,638.530	997,000.824
178+50.52	69.77' Rt.	2,007,698.522	997,010.693

EXISTING R.O.W. RECORDED INFORMATION		
Parcel	Document No.	Date Recorded
1FH0037	73664	June 17, 1926
1FH0038	73664	June 17, 1926
----	73664	June 17, 1926
----	477386	August 30, 1967
----	484443	January 29, 1968

Proposed Pavement Frontage Road Curve #1

P.I.	= Sta. 0+55.40
Δ	= 85°56'27"
R	= 60.00'
T	= 32.43'
L	= 57.55'
E	= 9.60'
P.C.	= Sta. 0+22.97
P.T.	= Sta. 0+80.52

Proposed Pavement Frontage Road Curve #2

P.I.	= Sta. 5+10.40
Δ	= 90°00'00"
R	= 42.00'
T	= 42.00'
L	= 65.97'
E	= 17.40'
P.C.	= Sta. 4+68.40
P.T.	= Sta. 5+34.37



THIS IS TO CERTIFY THAT WE, JORGENSEN & ASSOCIATES, INC., AN ILLINOIS PROFESSIONAL DESIGN FIRM LAND SURVEYING CORPORATION, NUMBER 184-2771, HAVE SURVEYED THE PLAT OF HIGHWAYS SHOWN HEREON IN SECTION 27, TOWNSHIP 43N., RANGE 8E., OF THE THIRD PRINCIPAL MERIDIAN, McHENRY COUNTY, THAT THE SURVEY IS TRUE AND COMPLETE AS SHOWN TO THE BEST OF MY KNOWLEDGE AND BELIEF, THAT THE PLAT CORRECTLY REPRESENTS SAID SURVEY, THAT ALL MONUMENTS FOUND AND ESTABLISHED ARE OF PERMANENT QUALITY AND OCCUPY THE POSITIONS SHOWN THEREON AND THAT THE MONUMENTS ARE SUFFICIENT TO ENABLE THE SURVEY TO BE RETRACED. MADE FOR THE DEPARTMENT OF TRANSPORTATION, STATE OF ILLINOIS, DATED AT LAKE VILLA, ILLINOIS THIS 23rd DAY OF March, 2012.

COORDINATE TABLE			
STATION	OFFSET	NORTH	EAST
55+92.00	0	2,007,020.963	996,905.577
55+92.00	22.97' Rt.	2,007,030.374	996,926.533
56+01.82	111.75' Rt.	2,007,078.484	997,002.045
56+14.47	63.73' Rt.	2,007,070.939	996,952.061
56+16.72	69.67' Rt.	2,007,076.094	996,956.050
56+40.47	140.72' Rt.	2,007,138.484	997,001.914
56+41.52	11.71' Rt.	2,007,070.810	996,892.061
174+36.20	244.22' Rt.	2,007,188.485	997,001.805
174+68.82	218.23' Rt.	2,007,236.875	997,001.699
174+70.85	222.36' Rt.	2,007,236.885	997,006.539
174+77.76	211.56' Rt.	2,007,249.759	997,001.671
174+79.77	215.71' Rt.	2,007,249.770	997,006.511

JORGENSEN & ASSOCIATES, INC.  
120 PARK AVENUE  
LAKE VILLA, ILLINOIS  
(847) 356-3371

RECEIVED  
MAR 21 2012  
PLATS & LEGALS

STATE OF ILLINOIS  
DEPARTMENT OF TRANSPORTATION  
F.A.P. 336 (ILLINOIS ROUTE 31 BYPASS)  
SECTION 96-00209-00-PV McHENRY COUNTY  
PROJECT JOB NO. R-91-022-03  
STATION 55+00 TO STATION 58+00  
STATION 174+00 TO STATION 179+00  
SCALE: 1"=30' SHEET 23 OF 37

BUREAU OF LAND ACQUISITION  
201 WEST CENTER COURT  
SCHAUMBURG, ILLINOIS 60196

ROUTE F.A.P. 336 (ILLINOIS ROUTE 31 BYPASS) SECTION 96-00209-00-PV COUNTY McHENRY JOB NO. R-91-022-03 RECORDING: RECORDED ON AS DOCUMENT NO.

FILE NAME = ...\\D160F72-sht-30-00.dgn	USER NAME = akw	DESIGNED -	REVISED -	STATE OF ILLINOIS DEPARTMENT OF TRANSPORTATION	PLAT OF HIGHWAYS	SCALE: GRAPHIC	SHEET NO. 30 OF 49 SHEETS	STA. TO STA.	FED. ROAD DIST. NO. 1 ILLINOIS FED. AID PROJECT
		DRAWN - JORGENSEN & ASSOC.	REVISED -						
		CHECKED - CJ	REVISED -						
		DATE -	REVISED -						